



EAST MELBOURNE NEWS

SPRING 2008

**RATE RISE
SHOCK**

**GRASS LOSS IN
YARRA PARK**

**FUNDING FOR
ROUNDBOUTS**

The East Melbourne News

The East Melbourne News is a quarterly publication produced by the East Melbourne Group Inc. with funds provided by the City of Melbourne.



The East Melbourne Group Inc.
152 Powlett Street
East Melbourne 3002
ABN 16624318008

Editorial and Production

Editor:	Margaret Wood
News Team:	Percy Schlossberger Genevieve Morgan Frank Coppens Lynden Wilkie Sue Hamilton
Advertising:	Carmel Bourke
Publisher:	Composite Colour

The East Melbourne Group Inc.

Established in 1953, the EMG is believed to be one of the oldest residents' associations in Melbourne.

It strives to preserve the heritage character of East Melbourne, protect local parks and gardens and improve the residential amenity of the area.

East Melbourne Group Committee

Officers:

President:	Fiona Hinrichsen
Senior Vice-president:	Genevieve Morgan
Junior Vice –president:	Percy Schlossberger
Secretary:	Anna Macdonald
Treasurer:	Brian Chaplin

Committee:

Natalie Forsyth	Barbara Paterson
Bill Gillies	Stuart Hamilton
Lorraine Holschke	Ian Mitchell
Margaret Wood	Joanna Pace

Advertise in the

East Melbourne News

A circulation of 4000 copies is distributed quarterly to every residence and business mail box in East Melbourne, plus Local and State Government Offices.

Contact:

The EMG Office
152 Powlett Street
East Melbourne 3002
Phone: 03 9415 7570
Fax: 03 9415 7546
Email: admin@emg.org.au
For further inquiries

President's Message

The East Melbourne Group turns 55 years of age this year. Established in 1953, the 'EMG', as it is generally referred to, is reputed to be Melbourne's oldest residents' group.

It all began when a small band of people joined forces to fight a council proposal that sought the removal of elm trees to create more car parking spaces in East Melbourne. The existing impressive avenue of grand old specimens at the eastern end of George Street is the legacy of this remarkable beginning.



Fiona Hinrichsen

Sadly, some of the trees the 'EMG' saved from the axe in 1953, are nearing the end of their long life and will be removed by council sometime this year. The EMG went on to become active in working to save historic buildings threatened by the wrecker's ball during the speculative building boom of the 60s and 70s.

Whilst some of our finest buildings were saved, given the limited heritage and planning laws at the time, many did hit the dust to make way for high-rise developments. To this day, the work of the East Melbourne Group remains at the forefront of protecting East Melbourne's unique heritage character and residential amenity.

The EMG has an annually elected committee-of-management consisting of 15 members. There are also six very active sub-committees that work on specific issues concerning heritage and planning; amenities; parks and gardens; social functions and events and the EMG publication, the East Melbourne News. One of the purposes of the EMG is to 'foster community spirit'. A successful EMG project has been the establishment of the free community event, the East Melbourne Festa, first held in 2004 in Darling Square and then again in Powlett Reserve in 2007 and 2008.

Another unique event to emerge within the community is the wonderful New Years Eve party in George Street. EMG member John Lidgerwood, together with other George Street residents, staged the inaugural event last December and plan to do it all again this year. As attendances are expected to increase, the East Melbourne Group has agreed to join with George Street organizers to assist with the event.

To readers and EMG members, I urge you all to support these community events, the Festa and the New Years Eve party. And if you are not already a member of the East Melbourne Group, please fill in your 'interest' coupon found on page 15 in this edition to help us continue our efforts in preserving the wonderful character of our unique East Melbourne.

Fiona Hinrichsen
President

CONTENTS

Page 2	President's Message
Page 3	Rate rise shock
Page 4	Yarra Park - the makeshift carpark
Page 6	News In Brief
Page 7	Doubts hang over election system
Page 8	National Trust Symposium
Page 10	Off-leash areas under review
Page 11	Two roundabouts to get upgrade
	New State Planning Department
Page 12	What's On
Page 13	Crime Watch
Page 14-15	Notice Board



FRONT COVER:
Cooks' Cottage in the Fitzroy Gardens
East Melbourne

Rate rise shock



Some East Melbourne and Jolimont residents were in for a shock when they received their 2008-2009 rate notices last month.

Increases as high as 71% have been reported to the East Melbourne Group and there is indication that a number of ratepayers will be forwarding their letters of objection to Council.

Other ratepayers who have experienced slight decreases to their rates are drawing on the conclusion that there have been no recent sales in their particular street.

Municipalities are required to revalue all properties every two years. A council valuer has told the East Melbourne Group that there has been strong evidence of market value increases over the past two years, evidence which did not appear with the same strength during the 2004-2006 valuations.

This sudden change in market values would be a key reason for the substantial increases.

Under the 'net annual value' method of assessment, a council valuer has told the EMG that each site was physically inspected to ascertain the condition of property exteriors. Information from recent planning and building permit applications are also taken into consideration when assessing property values.

Dissatisfied ratepayers can respond informally by ringing the Council Front Desk on 9658 9658. Just ask to speak to the designated valuer for East Melbourne. If the valuer believes the site has been incorrectly valued, an adjustment may be made.

Alternatively, aggrieved ratepayers, under the Valuation of Land Act 1960, can lodge a formal written objection with the City of Melbourne setting out grounds on which the objection is based. Objectors must lodge their notice of objection within 2 months after the rate notice has been given.

If the objector is dissatisfied with the decision of a valuer or the valuer-general, he or she may apply to VCAT for review of that decision.

The information pamphlet accompanying 2008-2009 rate notices states, "the 2008-2009 year is a revaluation year and all rateable properties have been revalued to reflect increasing property values. While the real estate boom has affected property prices in the municipality, more than half of all residential ratepayers in the city (55%) will receive a rate decrease in 2008-2009. Less than a quarter (23%) will see an increase of less than 10%".

Spring is a great time to put your best frock and heels on for one of our wonderful Park Hyatt Melbourne events

Lunch with the Milliners

Share in the glamour of the Spring Racing Carnival and join us for lunch with Australia's leading milliners

Friday 19 September at 11.45am

\$80 includes lunch, wine and a gorgeous gift bag to take home



Prêt-à-Portea

Join us for afternoon tea and an exclusive showing with fashion stylist Christopher Horne presenting the exciting new Escada collection

Wednesday 8 October at 2.30pm

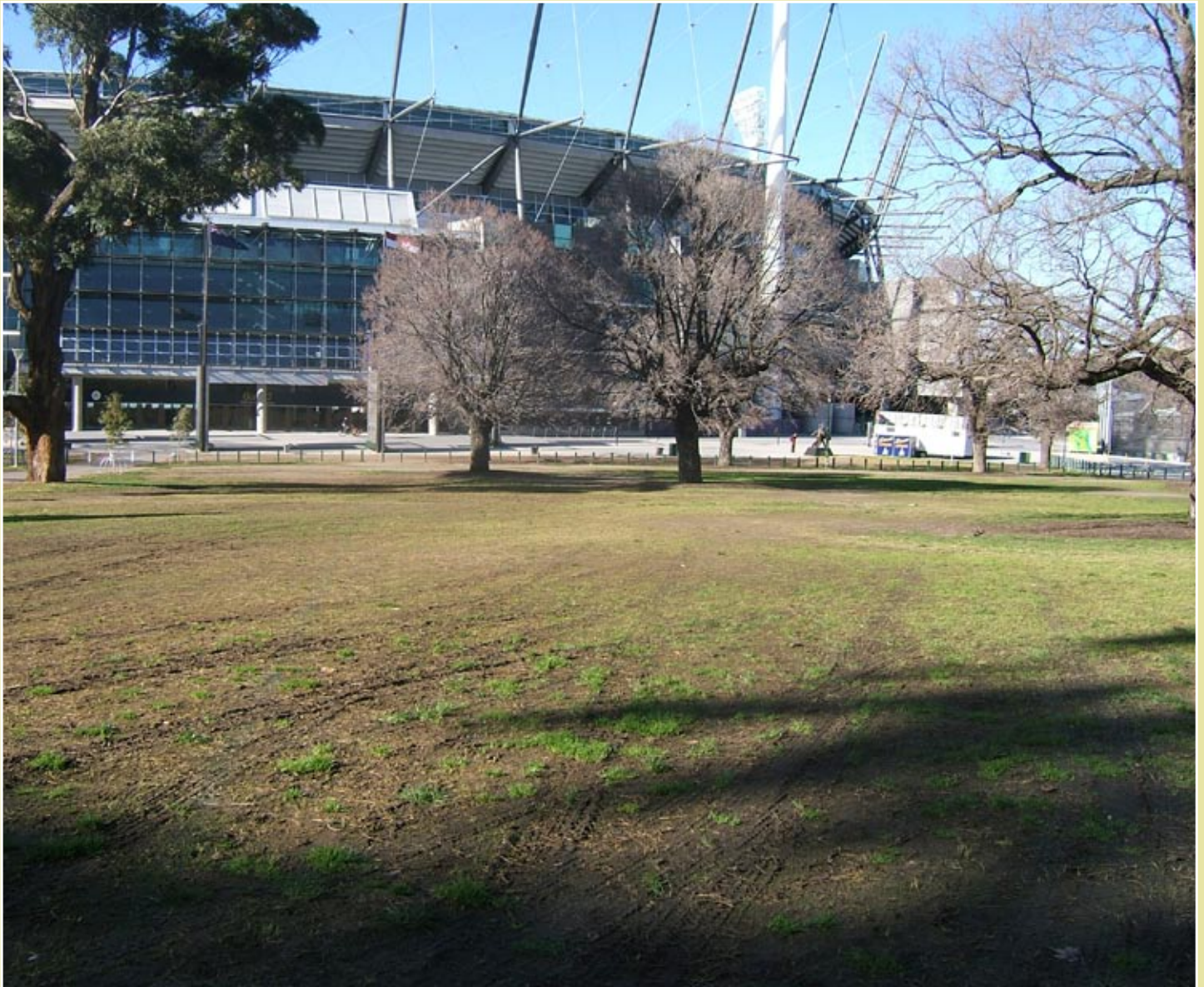
\$70 includes sparkling on arrival, afternoon tea and a gorgeous gift bag to take home

For bookings please call 03 9224 1205 or email catering.sales@hyatt.com
1 Parliament Square, off Parliament Place, Melbourne

PARK HYATT MELBOURNE™

Yarra Park – the makeshift carpark

And at what cost?



Above: Freshly planted grasses destroyed during the football season.

Melbourne Council spent \$200,000 last summer repairing turf.

This has become an annual exercise because the State Government permits up to 5700 cars to park on any one day for all sporting and entertainment events. As expected, the rejuvenation has been very short lived and clearly a waste of public funds.

Images show how the green grass that was so carefully brought back to life by Council has all but been decimated once again. For the daily users of this public park, it's a case of 'now you see it and now you don't'.

The current five-year 'Yarra Park Car-parking Agreement', put together by the State Government and co-signed by Melbourne Council, Melbourne Cricket Club, Melbourne Cricket Ground Trust and Melbourne and Olympic Parks Trust, is due to expire in 2010.

The public will be watching closely to see which direction the Government chooses when it comes to the crossroad of decision-making in 2010.

Will the State Government take the brave path towards environmental responsibility and historic protection by closing Yarra Park to all events car-parking and perhaps put in place better transport services to and from events?



Above: How it looked during the Test Cricket Season last summer. Cars were banned during the restoration.

It has been done before and worked well. No-one was disadvantaged. Just go back to the Commonwealth Games. No cars were permitted in Yarra Park for the duration of the Games.

Or when the crunch comes, will the State Government bow to pressure from big business and the entertainment and sporting sector. Will it give in and continue to provide make-shift car-parking facilities in this historic public park for all events at the MCG, and the Tennis Centre, the Olympic Park area, and including the soon to be completed stadium at Gosch's Paddock?

It is no secret that the Melbourne Cricket Club wants to take control of Yarra Park. If the State Government allows this to happen, it would be abdicating its responsibility as custodian of this public parkland.

If it chooses the former option, it will be the first step towards protecting an important piece of Melbourne's early history and the 490 heritage elms that line Yarra Parks impressive avenues.

According to a conservation analysis commissioned by the City of Melbourne, the earliest records on Yarra Park date back to 1803 when the northern side of the river was described as being of "timber and good soil".

In 1837, plans drawn up by Robert Hoddle included an area reserved for the grazing of police horses – later known as 'Police Paddock' in Yarra Park. It was also his vision to set aside an area for recreation and amusement of the inhabitants of Melbourne.

As well as being the site of the 'yarra yarra' tribe, Yarra Park is the site of a piece of sporting history in 1848 when the first Australian rules game was played between Scotch College and Melbourne Grammar.

The Melbourne Council has maintained a policy commitment to eventually phase out car-parking by 2010. The local community supports Council on this issue and continues to maintain its rage over the treatment of such an important public asset.



Above: Four wheel drives wear out the turf. No turf left on this lawn.



Above: Close encounters with heritage elm trees. Regulations do not permit cars to come within 3 metres of trees. This is being ignored.



Above: Council has placed mulch around the trees as a protective measure against the drought. Cars are being directed over these areas further compacting the soil.

News in Brief

New development proposal for Dallas Brooks Hall?

There have been media reports suggesting Dallas Brooks Hall may be back on the developmental agenda. In 2005 Lend Lease planned to demolish the 1960s headquarters Freemasons Victoria and build a 10 to 12 storey apartment block. The proposal then lapsed.



Dallas Brooks Hall

Electronic counters in Fitzroy Gardens

Council continues to assess the problem of illegal cyclists speeding through the Fitzroy Gardens with the help of electronic counters. Special strips have been placed at various entry points to measure the number of bikes entering the park and at what speed. Another initiative has been amber flashing messages rolling across the roofline of the rangers' patrol truck.

Final stages for Becton's 'Eastside'

A low-rise section of one-bedroom apartments on the railway side have been completed with more than half of the dwellings being occupied.

The central concrete core of the high-rise tower has two more floors to be poured. At completion, the top four floors will have one apartment per wing, while floors underneath to the sixth level have been divided because of a slowing of sales.

Three storey town houses nearer Wellington Parade South are still under construction with late changes being made to exterior designs.

'Copenhagen' bike lanes to go ahead

Special 'Copenhagen-like' bike lanes have been approved for East Melbourne and will be constructed along Albert Street despite opposition from businesses in the area. It has been estimated that up to 200 cyclists per hour will use the lanes

Concourse extension over Brunton Avenue

A single outbound lane will be closed in Brunton Avenue during the widening of the existing elevated pedestrian concourse between light towers 4 and 5. The Melbourne Cricket Club wish to alleviate problems associated with crowd movements around the southern stand.

The extension will be built over Brunton Avenue covering an area of approximately 215m x 6m.



Becton's 'Eastside' tower

More funding for Richmond Football Club development

The Richmond Football Club has received an extra 8 million dollars taking the total funding for the upgrade of club facilities to 20 million dollars. An "Indigenous Centre" for aboriginal youth is the latest proposal to be included in the development.

Abortion Clinic wants "protest-free" zone.

The East Melbourne Abortion Clinic in Wellington Parade has asked the State Government to put in place a 50m zone to keep protestors away from the entrance of the clinic.

New legislation which will decriminalise abortion is expected to come before parliament shortly.

Anti-abortionists have been conducting a 16-year campaign outside the clinic to dissuade women from entering.



the pavilion fitzroy gardens

The Pavilion Fitzroy Gardens will captivate you with its panoramic views of the beautiful Fitzroy Gardens and impress you with its sophisticated cuisine and friendly atmosphere.

Situated right in the heart of the historic gardens, the sleekly renovated cafe is open seven days a week for breakfast, lunch and afternoon tea. With management boasting a wealth of experience in the function industry, The Pavilion offers excellent function packages for parties of up to 200 people.

Phone 9417 2544

or email

functions@thepavilionfitzroygardens.com.au

Doubts hang over election system

“The restoration of ward councillors, the return of attendance voting and control over voting entitlements is the only way democracy can be brought back to the City of Melbourne”, says CORBA.

As the Melbourne City Council elections draw closer, resident groups and business associations across the municipality are stepping up their criticism of the State Government's refusal to review the current system of electing the Melbourne Council.

The Coalition of Residents and Business Associations, (CORBA), believes the current voting system is flawed and badly lacks democratic elements essential for fair and reasonable representation for the municipality of Melbourne.

Local Government Minister Richard Wynne did however quickly respond to public criticism of the rights of lessors and lessees of car-park spaces and boat moorings to have two votes at the election. But when it was exposed that owners of electrical sub-stations, helipads, communication antennas were also entitled to 2 votes each, the Minister said he would not redraft the legislation.

However, after the Age newspaper, on 20 June, revealed that “a nine-level storage building full of boxes and paperwork, was the registered address for more than 200 voters”, Mr Wynne said he would review the entitlement of owners of storage spaces.

The City of Melbourne Act was introduced by the State Government in 2001. Every other municipality in Victoria is required to conduct regular review under the Local Government Act.

In the meantime the Lord Mayor John So has stated the timing is not right and that a review could be conducted after the elections. So, was elected in 2004 on a shared ticket giving him a five-four majority on the council.

It is unclear whether Cr So will be seeking re-election in November.

Affiliations of the Coalition of Resident and Business Associations (CORBA-Melbourne) include:

The East Melbourne Group Inc, The Carlton Residents' Association, Northwest Melbourne Association Inc, Melbourne-South Yarra Group Inc, Southbank Residents' Group, Parkville Association Inc, Residents 3000 Inc, Hardware Lane Precinct Group, Eastenders, Kensington Association and Docklands Residents Association, Collins Street Precinct, Docklands Chamber of Commerce and Melbourne Business Council.



NEW YEAR'S EVE


in George Street East Melbourne
31 December 2008 7pm-1am

Come and hear the sounds of the
Radio Rhythm Orchestra - Swing Band

Entry charge: \$60 per person
BYO Food and Beverage

Bookings open November 1 2008

For more information phone “Georgian Court”
9419 6353



NATIONAL TRUST Symposium Held in East Melbourne

A successful symposium on 'Intangible Cultural Heritage' was held in July in East Melbourne to review the Trust's treatment of intangible heritage and to examine current projects.

Held at St Peter's Hall, 130 attendees included representatives from all levels of government, heritage professionals, museum specialists, students, artisans, indigenous and representatives from the East Melbourne community.

The third day of the symposium was devoted to heritage site visits. One of the main reasons East Melbourne was chosen as the venue for the symposium was to showcase the suburb as a leading historic inner area of Melbourne.

Heritage sites visited included Tasma Terrace, headquarters of the National Trust, the Lutheran Church, Parliament House, East Melbourne Synagogue, Victorian Artists Society building and St Patrick's Cathedral.

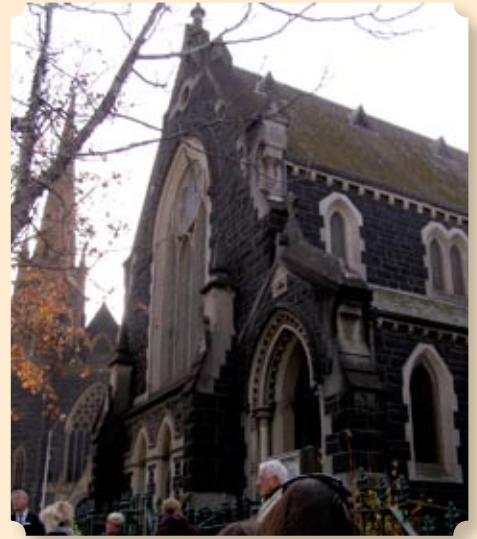
A visit was also arranged at the old City Watch House where the Trust now runs educational dramas in courtrooms and the old city lockup.

During the first 2 days of the symposium, the intangible heritage concept was investigated and debated from many angles. It was acknowledged that heritage is not only about places – oral history, performing arts, social practices, rituals etc also need recognition and protection. Topics included sport, traditional skills, musical performance, Jewish heritage and Indigenous folklore.

Dr Celestina Sagazio, Senior Historian, and Tracey Avery, Cultural Heritage Manager of the National Trust organized the 2 day program of speakers from around Australia and overseas.

The Minister for Planning, the Hon Justin Madden, opened the symposium and acknowledged the leading role the Victorian National Trust and its partners, Deakin University, Australia ICOMOS and the Heritage Council of Victoria, were playing in furthering the community's understanding and appreciation of a broader range of heritage.

Keynote speaker was Dr Richard Engelhardt, UNESCO Regional Advisor for Culture in Asia and the Pacific region. Master of ceremonies was Dr Barry Jones, AO.



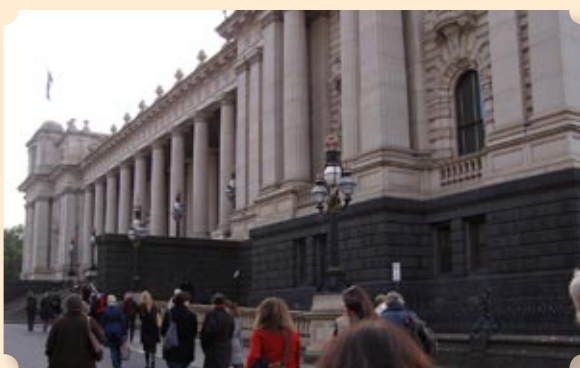
NATIONAL TRUST (Victoria)

If you are a member of the National Trust, there are enormous benefits when you visit heritage sites during your travels. Join before you depart and enjoy free admission to hundreds of National Trust properties.

The International Property Guide is available at the Trust's headquarters at Tasma Terrace, East Melbourne

**Phone: 9656 9800
FOR ALL TRUST INQUIRIES**





Off-leash areas under review

Dog owners from East Melbourne, Richmond and Collingwood are asking the City of Melbourne to move off-leash areas in Yarra Park to a safer location.

Regular users of the park say the current off-leash areas have never worked. Designated about 10 years ago without any community consultation, owners claim there has always been a reluctance to let dogs loose in areas that abutt busy Punt Road and Brunton Avenue.

An area more conducive to dog exercising is Lawn 8 further to the north of the park, which has the protection of the fenced-off Jolimont Station compound. Owners believe this area is by far the safest part of the park and best suited for off-leash exercising.

Dog owners said a meeting with Councils Chief Executive Officer Kathy Alexander and Rob Adams, Director of Design and Culture, was an opportunity to discuss reasons for proposing Lawn 8 as an appropriate area. Lawn 8 is generally considered to be safe from all busy roads and crossed-pathways used by cyclists, and was flat and open so that the dogs could be seen at all times. It is also the only area with access to water for the dogs.



The Yarra Park request comes shortly after a debate involving Royal Park users who were also unhappy about existing off-leash areas. It was only after a long drawn-out campaign lasting 3 years that Council finally agreed to adopt a new set of recommendations for improved exercising areas.

A Council spokesperson has stated that all new proposals must go through an extensive study of park usage and a process of community consultation and comprehensive review before any new recommendations are adopted and gazetted as a municipal order.

'150 Clarendon' update

The old Mercy development, '150 Clarendon', is progressing well says a spokesperson for Salta Properties. With the glass to the façade now up to level 6, the apartments are taking shape internally as the development heads to completion next year.

Retail tenancies on the site are currently being finalised, promising some new additions to the East Melbourne neighbourhood. Locarno, a restaurant by Raymond Capaldi, (formerly of Fenix at Victoria Gardens), will occupy the southwest corner of the ground floor. This will be a cantina-style restaurant with bar and private dining room facilities as well as a fine dining restaurant.

Salta Properties has also commenced construction on 140 Gipps Street, and is offering contemporary boutique apartments which are due for completion in mid 2009.

CRUISEWORLD & GLOBAL TRAVELLERS

**All your travel needs
Under one roof**

Leisure & business

- Domestic & International
- Air, rail and tour bookings
- Cruise specialists
- Experienced consultants
- American Express card payments & services
- Foreign currency
- Travel Insurance
- Visa processing and information



Whether it is Antarctica, Argentina, Bulgaria, Bucharest, Morocco, Malaga, Zimbabwe or Zanzibar, our expertise in the A to Z of travel is beyond compare. We can arrange your travel from beginning to end with a minimum of fuss and bother. We keep abreast of the latest specials and destinations and have the backing of the American Express Travel Services network. Call in and discuss your next adventure.

www.globaltravellers.com.au sales@globaltravellers.com.au
37 Victoria Parade Collingwood 3066
Tel: 9417 3747 Fax: 9419 6577
Members of IATA, AFTA & ICCA. Licence: 32078

ALL CREATURES ON HODDLE

VETERINARY HOSPITAL

**1229 Hoddle Street,
East Melbourne**

(Opposite Hungry Jack's)



**We offer a full range of Veterinary Services
with free pick up and delivery, and extended hours
to allow for evening consultations**

Telephone: 9415 8288

**Open 8.30 to 11am and 3 to 6.30pm Monday to Friday
and 9 to 11am Saturdays, or by appointment**

Two roundabouts to get upgrade



Pictured left: A crumbling roundabout at the intersection of Simpson and Hotham Streets.

The worst of East Melbourne roundabouts will be reconstructed in early 2009. Council funding for the project has been included in this years capital works budget.

Concept plans have been lodged with the planning department at council and public notices have been erected at the two intersections where works will be carried out.

The general public have an opportunity to respond to the proposed upgrades at the intersections of Powlett and George Streets and Powlett and Gipps Street.

Delegates from the East Melbourne Group have met with council engineers to discuss the shape and configuration of the roundabouts.

Design elements that need to be taken into consideration include the management of traffic speed and the movement of service vehicles such as fire and other emergency vehicles. There will be no change to design speed which is currently 40km.

Council has confirmed that there will be little change to the shape of the existing roundabouts with the exception of kerbing extensions which will be integrated with the existing adjoining footpaths.

Whilst there has been some suggestion that there would be very little vegetation included in the design, the EMG has insisted that landscaping must be considered during detail design. Visibility and safety were key concerns. Regulations stipulate vegetation to be no more than 600 mm.

The East Melbourne Group has been campaigning for an upgrade of the 1970s roundabouts since 2001. It has taken this long to reach a firm undertaking from Council that money will be spent on two of these aging road structures. The EMG will continue lobbying for improvements to the other 6 roundabouts.



CAFÉ ON ALBERT

café willy
100% Arabica

- All Day Breakfast
- Al Fresco Dining
- Fully Licensed
- Corporate Catering
- Caffé Willy exclusively at: Café On Albert
- Phone for dinner reservations

Hours:
Mon-Fri - 7:00am - 3:00pm
Saturday - 7:30am - 2:00pm
Sunday - 8:00am - 1:00pm

90 Albert St East Melbourne Phone: 03 9419 0500

New State Planning Department

Not so long ago State Planning matters came under the Department of Infrastructure (DOI). Then there was a shift to another department called the Department of Sustainability and Environment (DSE).

Just as we were getting use to that change, there has been another move. A department called Department of Planning and Community Development (DPCD) now takes care of all State Planning matters.

Information can be obtained by logging onto www.dpcd.vic.gov.au/planning

Explanatory note on the website states the DPCD has been established to closely link planning with community development, to build active, confident and inclusive communities.

The department covers other areas such as Community Development, People and Community Advocacy, Strategic Policy, research and Forecasting, Corporate and organizational Development, and Communications.

The Department advises and supports nine Ministers and 12 Ministerial portfolios

What's on

'Tales of Hoffman'-Opera by Offenbach

21 24 27 30 December
Arts Centre
Ticketmaster 1300 136 166

'Alcina'-Opera by Handel

1 4 7 10 12 15 December
Arts Centre
Ticketmaster 1300 136 166

Melbourne Marathon-42km

Half Marathon 21km
Run/walk 10km & 5km
Finishing at the MCG
Sunday 12 October
www.melbournemarathon.com.au

Art Deco 1910 – 1939

Until 5 October
Open daily 10am-5pm
Open Wednesday until 9pm
National Gallery of Victoria
St Kilda Road

The Impermanent City

Photographic exhibition of
beautiful buildings demolished
since the late 1880s.
Old Treasury Building
Spring Street, Melbourne
6 September – 23 November

Handel's Water Music

Melbourne Symphony Orchestra
Hamer Hall Arts Centre
2, 3 & 4 October
Ticketmaster 1300 136 166

'Don Giovanni' – Opera by Mozart

Arts Centre
14 17 20 29 November
6 8 11 14 December
Ticketmaster 1300 136 166

Melbourne Town Hall Organ

Free Tours
Swanston Street, Melbourne
Bookings Phone: 9658 9658

Billie Elliot – Musical

Opens 13 December
Her Majesty's Theatre
Tickets Ph 132 849

Mozart's Requiem

Melbourne Symphony Orchestra
Melbourne Town Hall
17 October at 7.30pm

Hinterlands

Albert Tucker's Landscapes
1969-1975
Until February 2009
Heide Museum of Modern Art
7 Templestowe Road
Bulleen
Ph: 9850 1500

Jazz Nights at 'The Commune'

John Montesante Quintet
Thursdays
St Andrew's Place
East Melbourne
Thursday, Friday nights weekly
Bookings essential – Free entry



Still Life with Yellow Cup, 2008, Oil on linen on board, 22 x 30cm



Untitled - Watercolour, 2007

David
Moore

2-27 September

Tiffany
McNab

9-30 October

Open Mon-Fri 9.30-5.30 Sat 11-5 or view online : www.chrysalis.com.au



CHRYSALIS
GALLERY & STUDIO

179 Gipps St East Melb 3002
T: (03) 9415 1977
E: prints@chrysalis.com.au



Rebecca Mendoza singing at 'The Commune'



Crime Watch

Neighbourhood Watch Report for the area of East Melbourne –
 Provided by Sergeant Warren Jackman of the Victoria Police for the period of July 08.
 Due to privacy considerations NOT all offences for this area are listed.

Date	Details	Location
01.07	Theft from vehicle	Wellington Pde
02.07	Theft from vehicle	Eades St
03.07	Theft from vehicle	Albert St
04.07	Theft from vehicle	Hotham St
04.07	Theft from vehicle	Victoria Pde
06.07	Theft from vehicle	Albert St
07.07	Theft from vehicle	Wellington Pde
11.07	Theft from vehicle	Brunton Ave
11.07	Property damage	Hotham St
12.07	Theft	Clarendon St
12.07	Theft from vehicle	Albert St
12.07	Theft from motor vehicle	Vale St
13.07	Theft – bicycle	Jolimont Tce
13.07	Burglary, front door forced	Gipps St
13.07	Theft from vehicle, window smashed	Jolimont Lane
13.07	Sports area theft	Brunton Ave
17.07	House burglary	Vale St
17.07	Business office burglary, door forced	Albert St
19.07	Bicycle theft x 2	Brunton Ave
19.07	Business office burglary, door forced	Albert St
19.07	Theft from backyard, bicycle	Hotham St
21.07	Burglary from apartment, back window forced	Victoria Pde
24.07	Burglary, hospital	Simpson St
25.07	Car park vehicle theft x 4	Brunton Ave
27.07	Bicycle theft	Brunton Ave
27.07	Property damage	Simpson St
29.07	Burglary	Albert St
29.07	Restaurant – property damage	Wellington Pde
30.07	Theft from vehicle	Albert St

5 offenders were processed for reported offences in the area

What is the PCCC?

The Police Community Consultative Committee and better known as the PCCC.

Established in 1991, its aim is to improve communication with the community, reduce crime within the community and to build better relationships between police and the community.

Through local councils, Consultative Committees are established drawing members from a wide cross section of the community. They may have connections with local and state government, businesses, Neighbourhood Watch and local residents.

PCCCs are an ideal way to harness resources within the community to increase both individual and community safety. Monthly meetings are held at the Melbourne Town Hall and chaired by a member of the Police Force.

Issues may cover such topics as burglary, traffic controls, drunkenness, public nuisance, licensing and illegal bike riding.

For more information log onto www.police.vic.gov.au/communityconsultativecommittees
 Victoria Police Centre 637 Flinders Street Melbourne 3005 Ph 9247 6666

Notice

Place your notice on this
NOTICE BOARD

If you would like to
advertise a community
event or group activity,
items to sell,
positions vacant,
services available,

Contact: Carmel
9415 7570, or
Email: admin@emg.org.au

PODIATRIST

For all of your foot care and
lower limb problems

Refer to www.ja-podiatry.com
Jason Agosta Podiatry

Level 8 166 Gipps St
East Melbourne 3002
03 94176885

First Saturday of the month

“Friends of the Library”

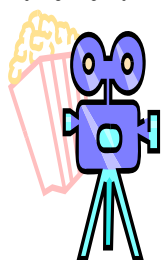
Meet for morning coffee
10am-12 midday
at the library upstairs

122 George Street
East Melbourne

ALL WELCOME

OVER 45'S SOCIAL CLUB

Join us at the movies or the theatre,
for lunch or dinner



For more information or a
newsletter, telephone Aileen on
94151906. www.life.org.au

Inner Melbourne Life Activities Club
– a not for profit group

Lake Como Italy



In Sala Comadina, opposite the only island
of Lake Como, a rustic village house with
modern conveniences,
100 metres from the lakeshore.
Romantic getaway for 2 – comfortable for a
group of friends or family of six.
Converse with the locals; enjoy the lake
cuisine; visit historic villas and gardens;
designer shopping in Como and Milan;
skiing in St Moritz... all on your doorstep.

Contact the owner direct or book online:
www.lakecomohomes.com/displayproperty.asp?p=74
LakeComo@pg.com.au

EAST MELBOURNE Library & Community Centre

122 George Street
EAST MELBOURNE

HOURS: Sunday Closed
Mon 12pm-6pm
Tues 1pm-8pm
Wed 10am-6pm
Thurs 1pm-6pm
Fri 1pm-6pm
Sat 10am-2pm

PHONE: 9658 9600
WEBSITE: www.melbourne.vic.gov.au/libraries
EMAIL: library@melbourne.vic.gov.au

PARIS APARTMENT

Quiet 2 bm, well appointed
First floor apartment
for minimum weekly rentals.

Located just 20mins walk from
Notre Dame, 10mins from
Marais and Paris Opera
and 5mins to 3 metro lines
RER and TGV.

East Melbourne owner
9419 2712
0412 196 019

GLEN EIRA CITY CHOIR PROMS AT SPRINGTIME

CONDUCTOR:
HUGH FULLARTON

SUNDAY, 14TH SEPTEMBER,
2:30pm

GLEN EIRA TOWN HALL
AUDITORIUM

Cnr. Glen Eira & Hawthorn Rds,
Caulfield

Ticket Enquiries: 9578 1947
\$20/\$15 conc.

Monday Morning Group

East Melbourne Neighbourhood Group

Come and enjoy a weekly
program of interesting
activities.

FOR FURTHER INFORMATION East Melbourne Library
122 George Street City of Melbourne 9658 9929

Board

All Creatures on Hoddle

VETERINARY HOSPITAL

1229 Hoddle Street
EAST MELBOURNE

Open: Monday – Friday
8.30am to 11am
3.00pm to 6.30pm

Saturdays
9am to 11am
TELEPHONE: 9415 8288

Volunteers Needed

Volunteers are needed for several agencies in Fitzroy which support homeless people. Some are residential and others are day centres.

Volunteers provide social companionship, serve meals, share a cuppa, and help run activity groups and drive men and women to medical appointments.

If you are interested in volunteering please call **Connie** at **Shekinah Homeless Services** on 9287 5568

Library Book Group

EAST MELBOURNE LIBRARY

Second Thursday of each month

8pm – 10pm

Upstairs at the Library

122 George Street

Enquiries: Lynden Wilkie
Phone: 9486 0769

HOLY TRINITY ANGLICAN CHURCH FANTASTIC FUND-RAISING FUNCTION

Friday 17 October 6.30pm

Fabulous Finger Food
followed by a
Fruity Melodrama
and a
Fiercely contested Silent Auction

Tickets: \$20 Single/\$35 Couple
For further information/Auction
goods donation contact
Peter Arnott: 9417 5048

Pre-school story time East Melbourne Library

40-50 minutes

2-5 year olds
Through-out the year
Wednesday 11am
122 George Street
Phone: 9658 9600
Email:
library@melbourne.vic.gov.au

Your Biographer

Have you ever thought that the stories and experiences of a loved one, such as an older relative should be written down?

Will you regret the loss of family stories and memories?

Your Biographer provides biography and memoir writing services.

A precious gift opportunity.
Gift certificates can be prepared for a special event.

www.yourbiographer.org.au
0411 535 808

For Sale

Country cottage
Adjacent to Murrumbidgee River 369
Leonard Street, Hay NSW
400 kilometres north of
Melbourne



Quiet sanctuary with river views. 3 bedrooms, open living areas including lounge, formal dining, open fire place, polished floor boards. New kitchen, renovated bathroom, north-facing sunroom.

New roof and fencing, new 6m x 3m lock-up shed. Large established garden, paving. Double allotment with front, side and rear access.

Walk one block to local bakery, country butchery and hotels.

Price \$159,000
Telephone: 0417 934 130

MEMBERSHIP

OPEN TO ALL MEMBERS OF THE COMMUNITY

Your local association is the
East Melbourne Group Inc.

Please fill in your details below and send to:

The Secretary
The East Melbourne Group Inc.
152 Powlett Street
East Melbourne VIC 3002

Name:.....

Address:.....

Telephone:.....

I would like to have information sent to me
about joining the EMG

Or email to admin@emg.org.au

EAST MELBOURNE HISTORICAL SOCIETY

Coming Events

AGM

Wednesday, 15 October, at 8.00p.m.
Following our
AGM Rev. Clemence Taplin,
daughter of Archbishop Woods,
will talk of her memories of growing up
at Bishops Court.

at **Clarendon Terrace,**
210 Clarendon Street, East Melbourne

CHRISTMAS DRINKS

Wednesday, 3 December, at 6.30p.m.
Further details to be announced.
Be surprised!

Enquiries: **Deirdre: 9421 3252**

‘WE KNOW THE NEIGHBOURHOOD. WE LOVE WHAT WE DO.’

Caine Real Estate, located in East Melbourne since 2002, values its position in the community as an informed, reputable resource for discerning investors in residential sales, executive leasing and property management.

With an auction clearance rate in excess of 90 per cent, buyers, sellers and investors can be confident Caine Real Estate has the area knowledge and professionalism to deliver optimal, issues-free results.

