

EAST MELBOURNE NEWS

WINTER 2008

**JOLIMONT
DEVELOPMENTS
ON THE RISE**



**ELECTORAL SYSTEM
DEBATE HEATS UP**

The East Melbourne News

The East Melbourne News is a quarterly publication produced by the East Melbourne Group Inc. with funds provided by the City of Melbourne.



The East Melbourne Group Inc.
152 Powlett Street
East Melbourne 3002
ABN 16624318008

Editorial and Production

Editor: Margaret Wood
News Team: Percy Schlossberger
Genevieve Morgan
Frank Coppens
Lynden Wilkie
Sue Hamilton
Advertising: Carmel Bourke
Publisher: Composite Colour

The East Melbourne Group Inc.

Established in 1953, the EMG is believed to be one of the oldest residents' associations in Melbourne.
It strives to preserve the heritage character of East Melbourne, protect local parks and gardens and improve the residential amenity of the area.

East Melbourne Group Committee

Officers:

President: Fiona Hinrichsen
Senior Vice-president: Genevieve Morgan
Junior Vice –president: Percy Schlossberger
Secretary: Margaret Wood
Treasurer: John Cottrell

Committee:

Brian Chaplin
Bill Gillies
Lorraine Holschke
Anna Macdonald
Barbara Paterson
Natalie Forsyth
Stuart Hamilton
Ian Mitchell
Joanna Pace
Maria Wilson

Advertise in the
East Melbourne News

A circulation of 4000 copies is distributed quarterly to every residence and business mail box in East Melbourne, plus Local and State Government Offices.

Contact:
The EMG Office
152 Powlett Street
East Melbourne 3002
Phone: 03 9415 7570
Fax: 03 9415 7546
Email: admin@emg.org.au
For further inquiries

CONTENTS

Page 3	Debate heats up over electoral system
Page 4	News In Brief
Page 5	Jolimont residents challenge another development
Page 6	What's On
Page 7	New Library services take shape
Page 7	Green arrow proposed for dangerous corner
Page 8	East Melbourne Festa 2008
Page 11	Open for business
Page 12	The Great Ocean Walk
Page 13	Crime Watch
Page 14-15	Notice Board

Front cover: A horse drawn carriage waits to collect a wedding party in Wellington Crescent East Melbourne.



Cabbies grab a hot coffee in Simpson Street



Debate heats up over Electoral System

The system of electing Melbourne's City Council is under the spotlight. A review is out of the question, says the State Government.

The Minister for Local Government has ruled out any changes in the lead up the 2008 election. However, the Minister has recently taken action to stop an anomaly where owners and renters of car spaces were eligible to vote.

A noticeable disquiet has been developing within the local electorate over the current system of elections for the Melbourne City Council.

This has now attracted the attention of the print media with articles appearing in the Financial Review, the Age, Herald Sun and local papers. There are reports that disgruntled voters are feeling very uncomfortable about the current system.

Accusations that the system is flawed and open to abuse are coming from resident groups and business associations across the municipality of Melbourne.

Unlike other councils, the City of Melbourne's electoral arrangements have been established under specific legislation approved by the Victorian Government. The City of Melbourne has its own Act, the City of Melbourne Act. Every other municipality in Victoria is required to conduct regular reviews under the Local Government Act.

No such review has been discussed for the City of Melbourne.

Under the current system, businesses in the City of Melbourne are entitled to two votes while residents have only one vote. There is no ward system and Melbourne is the only Victorian council in which the mayor is elected by popular vote rather than by other councillors.

Local resident groups and business associations are asking the State Government why it is so reluctant to review the current electoral system.

In response, the Minister for Local Government Richard Wynne, says he does not intend proposing any changes of this nature to Parliament in the lead up to the 2008 elections.

On the matter of attendance voting versus postal voting, Minister Wynne believes it is a matter for Council to decide the method of voting.

Without the requirement of a review under the City of Melbourne Act, the current system could continue indefinitely. A review can be initiated by Council or directed by the State Government, but clearly there has been reluctance on the part of the City of Melbourne and the State Government.

The Coalition of Resident and Business Associations (CORBA-Melbourne), believes the City of Melbourne should be subject to regular reviews into the way elections are conducted and has appealed three times to the City of Melbourne for a review.

Last month CORBA-Melbourne called upon Premier John Brumby to reform the Council electoral system claiming that the current setup was undemocratic and open to abuse.



Lord Mayor So believes it is not the right time. However not all Councillors agree.

In support of a review, Councillor Sneddon has on several occasions attempted to get a motion through before the Full Council. Support has not been forthcoming from the Lord Mayor and the other members of the controlling faction, the 'So' team. Councillors Ng, Wilson, Jetter and Stringer have persistently voted against the motion.

In a submission to Council, the East Melbourne Group stated the current electoral system is neither comprehensible nor transparent. Ratepayers are expected to pay for a system which has been imposed on them but powerless to have reviewed.

CORBA-Melbourne is of the view that the current postal voting system, as opposed to attendance-voting, is open to abuse and cannot be audited. It has asked for a return of attendance voting while reserving postal-voting for voters who are incapacitated, infirm or absent.

More importantly CORBA believes new residential areas in Docklands and the acquisition of the once divided area of Kensington will bring in an extra 9000 voting residents at the next election in November.

Affiliations of the Coalition of Resident and Business Associations (CORBA-Melbourne) include: The East Melbourne Group Inc, The Carlton Residents' Association, Northwest Melbourne Association Inc, Melbourne-South Yarra Group Inc, Southbank Residents' Group, Parkville Association Inc, Residents 3000 Inc, Hardware Lane Precinct Residents and Tenants Group, Eastenders, Kensington Association and Docklands Residents Association, Collins Street Precinct, Docklands Chamber of Commerce and Melbourne Business Council.

For more information about CORBA-Melbourne, log onto www.corba-melbourne.org.au

News in Brief

Model Tudor Village turns 60

For sixty years, visitors of all ages have enjoyed the charm of the Tudor Village in the Fitzroy Gardens.

A group of 20 model buildings make up the quaint village, among them William Shakespeare’s and Anne Hathaway’s cottages. The village was presented to the City of Melbourne by citizens of Lambeth in England, in appreciation of gifts of goods dispatched from Victoria to England during shortages following World War II. The village was restored in 2006.



Customer Service to increase operational hours?

Ever tried to contact Council out of office hours? It can be a very frustrating experience to find that you have been blocked in by cars illegally parked on a match-day at the MCG. Nothing much you can do about it except ring Council to get the parking infringement fellows around to book the culprit. Or perhaps you have arrived at a Council building for an important meeting only to find that you have been locked out and left standing on the footpath.

First reaction is to ring the Council Front Desk for assistance, but if you happen to ring after 5.30 you are out of luck. Council must realize that life goes on after 5.30.

Customer Service hours are being reviewed. At a recent Finance Committee meeting, Councillor Ng moved that a review be undertaken immediately for responding to both internal and external Customer Requests. It was agreed that a list of recommendations be drawn up for the June meeting. Let’s hope that one extra staff member will be allocated to answer Council’s phone at any time and on any day.

Aging elms come down in George Street

Three heritage elms local residents fought so hard to save from destruction back in 1953 have finally succumbed to old age and the elements of the current drought. It was during this campaign that the East Melbourne Group was established. Council, in its wisdom at the time, systematically went through East Melbourne removing elm trees to make way for more car spaces. The majestic canopy of elms that was saved at the eastern end of George Street has lived on for over 50 years under the protection of the East Melbourne Group. However, for some, the end is near. One has already been removed while two more are booked in for removal in June.



East Melbourne’s ‘Drilling Rig’ comes down.

The eyesore that has blotted the skyline beside the Jolimont railway yards has finally been removed. After two years of ‘unsuccessful oil exploration’, but very successful sales, Becton’s ‘Drilling Rig’ (Marketing Suite) was taken down on the 10th May in a quick operation lasting half an hour.

Work has now begun on the final stage of the residential low-rise project, being the three rows of townhouses. The 25 apartments on the railway side are due for occupancy in July. Now that the superstructure of the five floor office building is complete, work will commence in earnest on the 19 storey residential tower. The entire project is expected to be completed by July 2009.



Storm takes its toll in Fitzroy Gardens

The ferocious storm that hit Melbourne in March left a trail of destruction in the Fitzroy Gardens. A magnificent lemon scented gum was reduced to a pile of splintered timber while some of our aged elms just toppled over leaving enormous craters where the root systems once anchored themselves for over 100 years.

Ian Shears City of Melbourne arborist said for some reason the Fitzroy Gardens suffered the most damage with the loss of 5 trees in total. The thrust of the storm moved south straight down the centre of the gardens leaving debris strewn across the park.



Jolimont residents challenge another development.

Local residents, supported by the East Melbourne Group, have led a push to prevent the construction of a 6 storey development in one of the narrow streets of Jolimont.

The applicant appealed against council’s decision to reduce the proposal from 6 storeys to 5 storeys in height. To the disappointment of affected residents, Victorian and Civil Administrative Tribunal member, Mr Tony Liston, decided at the conclusion of the hearing to allow a permit to construct a 6 storey building.

Known for its charming one storey Victorian cottages, the character of Agnes Street has been the location of a number of new constructions in the past five years. The ‘Jolimont Square’ development, on the corner of Agnes Street and Wellington Parade South, was modified considerably to comply with heritage provisions of the Melbourne Planning Scheme.

Residents say they have chosen to live in Jolimont for the history, charm and amenity of the area. “Development should only be permitted if it is sympathetic to the character of the area with sensible constraints on height and bulk.” said Liz Hill, resident and member of the East Melbourne Group planning committee.

A permit to construct the apartment block at 16-18 Agnes Street at a height of 21 metres, was granted by the City of Melbourne despite being more than double Council’s own recommended height of 9 metres, 3 storeys.

“Our case was considerably weakened by the decision of the City of Melbourne. If Council planners are not going to uphold the provisions of the Melbourne Planning Scheme, then this sends the wrong message to developers and the Tribunal”, said Liz Hill.



Above, some of the low rise cottages in Agnes Street.

In 2002, Council agreed to conduct a Built Form Review for the whole of East Melbourne and Jolimont. It was then decided to conduct the review in two parts. Stage 1 would cover development areas in East Melbourne and Stage 2 the Jolimont area. The Built Form Review for East Melbourne, the C93, is now incorporated in the Melbourne Planning Scheme. Residents are still waiting for Council to conduct Stage 2 for the Jolimont area.



Soothe your body mind and Soul

Refresh, revitalise and restore your skin with our Elemis Pro-Collagen Quartz Facial. This advanced anti-wrinkle facial gives outstanding results after just one treatment. Revive your skin this Winter for only \$150.*

PARK CLUB
HEALTH & DAY SPA

Park Club Health & Day Spa
Park Hyatt Melbourne, 1 Parliament Square, Melbourne 3002
Open seven days a week. Bookings are essential on 03 9224 1222.

*Please mention this advertisement when you book. Valid 1 June – 30 June 2008.

What's on

Ian Armstrong: Selected works from the Armstrong Collections

Chrysalis Gallery & Studios
179 Gipps Street,
East Melbourne 3002
5 June – 5 July 2008
Enquiries: 9415 1977
www.chrysalis.com.au



'A single mind': Rick Amor

Heidi Museum of Modern Art
7 Templestowe Road
Bulleen
Until 13 July 2008
www.heidi.com.au

Run for Melbourne

Community Fitness Event
Federation Square
Sunday 22 June
9645 1333
www.run.melbourne.com.au

The Red Tree' Gondwana Voices

Australian Chamber Orchestra
Arts Centre
13-14 July 2.30pm
1800 444 444
www.aco.com.au

Free Tours of Council House 2

240 Lt Collins Street
Tuesdays 2pm
Bookings City of Melbourne
9658 9658

Ballet Imperial

Australian Ballet
Arts Centre, State Theatre
20 June-1 July 2008
www.ticketmaster.com.au
1300 136 166

Jazz with Ruby Page

The Commune
St Andrews Place
East Melbourne
12 June 5.30pm-8.30pm

The Marriage of Figaro

Melbourne Opera
Athenaeum Theatre
Collins Street
28 June-6 July 2008
www.melbourneopera.com

Black In Fashion: From Mourning to Night

An exhibition of couturier garments.
Ian Potter Centre; NGV Australia
Federation Square
Until 24 August 2008

The Melbourne Story

17 decades of Melbourne's history
Melbourne Museum
Nicholson Street, Carlton
Open every day

Two pianists unite – Duo Sol

Musica Viva
Caroline Almonte & Kristian Chong
Collins Street Baptist Church
15 July 2008
10.30am

National Sports Museum

Melbourne Cricket Ground
Brunton Ave, East Melbourne
Open daily 10am-5pm
Ph: 9657 8879

Melbourne Justice Museum

Russell Street, Melbourne
Open daily 9.30am -5.00pm
Bookings 8663 7228

Les Liaisons Dangereuses

Melbourne French Theatre
(In French with English subtitles)
Collingwood College Theatre
Cromwell Street, Collingwood
26-30 August 2008
Bookings: 9349 2250

New Library Services take shape –

But what about unfinished works at the East Melbourne Library?

Following the dissolution of the Yarra-Melbourne Library Corporation in 2007, the City of Melbourne is developing its own 'Library Services'. Extended opening hours and proposals to build 3 more libraries in Docklands, Southbank and Carlton are significant initiatives the community has been hoping for.

Despite these acclaimed proposals, promises to complete unfinished works and rectify defects and faults at the new East Melbourne Library are repeatedly being put on hold.

There has been plenty of discussion about installing a full size fridge, built-in bench space, and a dishwasher. In addition to the shortfall, poor acoustics and uncomfortable chairs are other problems still waiting to be rectified.

At Councils Community Services Committee meeting last March, the Melbourne Library Service Strategic Plan 2008-2018 was presented.

The Year One initiative includes increasing East Melbourne Library weekday and weekend hours of operation. This is good news.



What the draft titled 'actions proposed' fails to mention is that the community meeting area at the East Melbourne Library does not have a proper kitchen to facilitate the community area designed to hold 100 persons. Instead, a tiny wet area has been shoehorned in a space the size of a cupboard containing a small sink and bar fridge.

Wooden trolleys have been provided to carry cups, saucers and glasses, but the absence of bench space is a constant headache for caterers. Absent is a facility to keep quantities of food and beverages cool in the summer months. If the cooling system is not operating as it should, the risk of food being unfit to eat increases.

The Library and Community Centre Committee (LCCC) is disappointed that the \$5million building (opened in 2006) does not include a proper kitchen but believes some simple modifications could rectify the situation.

To add to the woes of the design of the East Melbourne library, there has been the suggestion that staff members at the East Melbourne Library need more space for storage and office space. It is difficult to see how this can be gained without encroaching on community facilities.



FINE FOODS CATERING

65 George Street
East Melbourne Vic 3002
P/F: 9419 5805



Trading Hours

Mon - Fri 11.00 am - 9.00pm.
Sat - Sun 11.00 am - 6.00pm.

138 Wellington PDE,
East Melbourne, VIC, 3002
Ph: 03 9419 6678

Before & After Hours By Appointment Only

Nail Spa
Ear Spa
Waxing
Firming Massage
Body Massage
Foot Massage
Foot Massage 10% off Everyday

'Green arrow' proposed for dangerous corner

The corner of Wellington Parade and Powlett Street has been deemed a dangerous corner with nine collisions being recorded over the past five years, and with some accidents resulting in serious injuries.

Vic Roads together with the City of Melbourne are proposing the introduction of a 'green arrow' to make the Right Hand Turn into Powlett Street much safer for motorists. This means all right turning traffic will be given a controlled turning phase and

will enable cars to complete their turn safely into Powlett Street.

The East Melbourne Group endorses the proposal providing the initiative does not increase through-traffic into the heart of East Melbourne's residential area.

In response to this concern, Vic Roads has stated that this is considered unlikely as the introduction of an extra cycle will cause some queuing and this would most likely

deter motorists from using Powlett Street as a 'rat-running' route.

The proposal is part of Vic Road's Safety Infrastructure Program and still in the preliminary stage of investigation. The initiative could take 6-7 months to implement at a cost of up to \$50,000 to install.

East Melbourne Festa 2008

The weather was kind to East Melbourne on Sunday 13 April for the 2008 Festa at Powlett Reserve.

While rain fell in other parts of Melbourne, the community was able to enjoy a warm and dry day for this special event.

Under the sponsorship of the City of Melbourne's Events Department, local traders, businesses and community groups linked together in a show of goodwill and community spirit. Clusters of white marquees sold hot and cold food and beverages, while community groups operated stalls selling packaged gourmet treats, curios and collectables and pre-loved toys.

Children of all ages delighted in the presence of the visiting farm yard and the popular trampoline trapeze. Clowns, face painting and the sand-wizard were some of the other favourites.

The crowd were entertained by St Michaels School Jazz Band , Danielle Soccio and her singing group, together with Marilyn Lock's dance group.

The East Melbourne Group and Festa Committee members, Maria Wilson, Genevieve Morgan, Margaret Wood, Faye Humphris and Penny Dimitroulis, have conveyed their thanks to the City of Melbourne for sponsoring the event, the only community event of its kind in the Melbourne municipality.

Special thanks must go to council officers Georgia Campbell, Jacqui O'Toole and Carolyn Wakefield for the impressive organization of the infrastructure and all the advice and assistance they gave the Festa Committee.





Above: The old Mercy Hospital has lost its bowed shape as work continues on the conversion into residential apartments. The completion of the development at '150 Clarendon' is expected in mid 2009.

Open for business

Three new traders have recently opened their doors in East Melbourne.

Café on Albert's new owner Bill Purton, has given the kitchen area a complete refit. Other improvements have been made to the interior. Serving excellent coffee, homemade pastries and cakes, the location at 90 Albert Street is a convenient stopping point for breakfast, lunch or afternoon coffee and cake. Look out for the white market-umbrellas on the charming terrace overlooking the East Melbourne Tennis Centre. Phone 9419 0500

Kiwi Fish and Chips has just opened its doors at Tribeca (between Albert Street and Victoria Parade). Owner Andrew Watson has based his business on the best fish and chip shop in Nelson, New Zealand. Fresh fish is flown in daily from New Zealand and is either cooked to your liking or sold fresh over the counter. Fresh Australian flake is also available. Whether you eat in or take away, there is a choice of freshly made salads and homemade sauces, including the famous NZ Watties tomato sauce. Phone 9417 5494.

Be Gossip is located in the shop once occupied by Pyman's Pharmacy, two along from the corner 7-11 Store. Be, the owner of the business, will make you feel welcome when you book for a full body massage or perhaps a relaxing foot massage. Other services include nail spa and waxing. To make an appointment at Be Gossip, ring 9419 6678 or just call in at 138 Wellington Parade from 11am, on any day of the week.



Kiwi Fish and Chips

CRUISEWORLD & GLOBAL TRAVELLERS
All your travel needs Under one roof
Leisure & business

- Domestic & International
- Air, rail and tour bookings
- Cruise specialists
- Experienced consultants
- American Express card payments & services
- Foreign currency
- Travel Insurance
- Visa processing and information

Whether it is Antarctica, Argentina, Bulgaria, Bucharest, Morocco, Malaga, Zimbabwe or Zanzibar, our expertise in the A to Z of travel is beyond compare. We can arrange your travel from beginning to end with a minimum of fuss and bother. We keep abreast of the latest specials and destinations and have the backing of the American Express Travel Services network. Call in and discuss your next adventure.

www.globaltravellers.com.au sales@globaltravellers.com.au
37 Victoria Parade Collingwood 3066
Tel: 9417 3747 Fax: 9419 6577
Members of IATA, AFTA & ICCA. Licence: 32078

ALL CREATURES ON HODDLE VETERINARY HOSPITAL
1229 Hoddle Street, East Melbourne
(Opposite Hungry Jack's)



We offer a full range of Veterinary Services with free pick up and delivery, and extended hours to allow for evening consultations

Telephone: 9415 8288

Open 8.30 to 11am and 3 to 6.30pm Monday to Friday and 9 to 11am Saturdays, or by appointment

CAFÉ ON ALBERT

100% Arabica

- All Day Breakfast
- Al Fresco Dining
- Fully Licenced
- Corporate Catering
- Caffé Willy exclusively at: Café On Albert
- Phone for dinner reservations

Hours:
Mon-Fri - 7:00am - 3:00pm
Saturday - 7:30am - 2:00pm
Sunday - 8:00am - 1:00pm

90 Albert St East Melbourne Phone: 03 9419 0500

DO YOU LOVE GOOD FISH AND CHIPS?

NOW OPEN

MON-FRI 11AM - 9PM
SAT-SUN 4PM - 9PM

SHOP 9B TRIBECA (FORMER VICTORIA BREWERY)
kiwifish.com.au
9417 5494 [KIWI]



The Great Ocean Walk

One of the most beautiful coastlines in Victoria has a series of walking tracks, many of which have been in existence for many years. All the walks are now linked, creating an uninterrupted walk from Apollo Bay to the Twelve Apostles over a distance of 91 kms.

The pack-carry walk can be completed over 8 days from east to west while staying at specific Great Ocean Walk (GOW) campsites. If you find the 91kms a bit long, there is a bus service that will return you to your car at the starting point of the walk. Or you may prefer to pick and choose certain 'days' of the GOW and still stay overnight at the base camps.

Recommended is Day 1 of the GOW where you can walk a 12km round trip between Shelly Beach picnic area to Marengo Beach. It is best to walk one way on the beach (some rock hopping but they are quite stable) and then the other way on the cliff top. There is a short steep stretch between the beach and

the Shelly Beach picnic area, but the pretty forest makes the climb worth the effort.

The Day 3 of the GOW covers Blanket Bay (at the end of the Blanket Bay Road) to the Cape Otway lighthouse which commands spectacular views. This leg is about 10.5kms. The first stop on this walk is Parker River inlet where the Parker River meets the beach, a stunning place to rest. From here you have access to the Parker Hill campsite, or other accommodation is at Bimbi Park, an easy 3 km walk from the lighthouse.

If you wish to enter the grounds of the lighthouse there is an entry fee of \$13. Unfortunately, there is little shelter, no coffee and no toilets.

Another good day walk is on the Day 4 of the GOW itinerary. From Cape Otway lighthouse to Aire River West is a distance of about 10kms or you may follow Station Beach signs from Bimbi Park, about 8kms.



Once again this could be done as a circuit. If you walk along Station Beach, you can visit Rainbow Falls but be careful of the tides. Otherwise the clifftop walk provides magnificent views and Aire River is a beautiful setting.

Helpful websites to visit for more information:
www.bimbipark.com.au
www.greatoceanwalk.com.au
www.parkweb.vic.gov.au
www.greatoceanroad.org/otways
www.visitotways.com
www.bom.gov.au/oceanography



Crime Watch

Neighbourhood Watch Report for the area of East Melbourne – Provided by Sergeant Warren Jackman of the Victoria Police for the period of March 08. Due to privacy considerations NOT all offences for this area are listed.

Date	Details	Location
01.03	Theft from vehicle	Albert St
01.03	Property damage	Victoria Pde
01.03	Theft from vehicle	Grey St
01.03	Hospital theft	Clarendon St
02.03	Burglary from premises, no sign of forced entry	Hotham St
06.03	Burglary, front door unlocked	Gipps St
07.03	Burglary from restaurant, forced front door	Albert St
08.03	Theft from hospital	Grey St
08.03	Construction site burglary, bolt cutters used	Clarendon St
09.03	Hospital theft	Grey St
09.03	Theft of bicycle from car park	Jolimont Rd
09.03	Theft from motor vehicle, jemmy used	Eades St
09.03	Multi theft from vehicle in car park, window smashed	Victoria Pde
09.03	Single theft from vehicle in car park, without force	Jolimont Rd
11.03	Business office burglary, back door, key used	Albert St
14.03	Single theft from vehicle in car park, window smashed	Clarendon St
15.03	Theft from vehicle, window smashed	Grey St
16.03	Theft from vehicle, smashed window	Jolimont Rd
19.03	Theft from vehicle	Eades St
21.03	Theft from vehicle, smashed window	Wellington Pde
22.03	Multi theft from vehicle, smashed window	Wellington Pde
22.03	Theft from vehicle, smashed window	Brunton Ave
23.03	Theft from sports area	Brunton Ave
23.03	Civic centre theft	Albert St
25.03	Burglary from house, cut/broke lock	Hotham St
27.03	Multi property damage in car park, key used	Victoria Pde
27.03	Property damage, car park	Victoria Pde
28.03	Burglary from dental practice, no sign forced entry	Albert St
30.03	Theft from health facility, lock manipulated	Berry St

ARE YOU A SMART DINER?

- Always keep your mobile phone on you
- Remember bags are safest on your lap
- Never hang your bag on the back of a chair
- Watch out for your laptop at all times
- Keep purses, wallets, cards and cash safely out of sight
- Never leave valuables unattended on a table, at a bar or on a chair

ARE YOU DRIVE AND PARK SMART

- Check the inside of your car by looking through the windows before getting in.
- Consider driving with the doors locked and passenger windows wound up.
- If you are being followed, find a place where you can get help/attract attention such as a police station/convenience store/open service station.
- Before leaving your parked car, remove all items whether they are valuable or not. If possible store items in the boot of your car.

Lake Como, Italy: Sublime

Casa Matra Ponto is an historic village house of rustic charm, tastefully furnished to reflect a modern re-interpretation of its 300 year-old history, with space for 6 guests or romance for 2, 150 m from the lakeshore, opposite the only island, Isola Comacina, on Lake Como.

Contact the owner:

riflessi@netvigator.com

Or visit the website to book online:

www.lakecomohomes.com/displayproperty.asp?p=74



Notice Board

Place your notice on this
NOTICE BOARD

If you would like to
advertise a community
event or group activity,
items to sell,
positions vacant,
services available,

Contact: Carmel
9415 7570, or
Email: admin@emg.org.au

LADIES TENNIS GROUP

Membership Available

\$60 per year

Enquire at the courts

Hamish Phone: 9417 6511

NEW MEMBERS WELCOME

9.30AM on Thursdays at the

East Melbourne Tennis Courts

Powlett Reserve – East Melbourne

For more information phone

Norma Wykes 9419 4577

norma.johnwykes@optusnet.com.au

First Saturday of the month

“Friends of the Library”

Meet for morning coffee

10am-12 midday

at the library upstairs

122 George Street
East Melbourne

ALL WELCOME

Holy Trinity Church vestry
Cnr Clarendon & Hotham Sts

YOGA

Gita style

Mondays 6pm with Simon

7.15pm with Leigh, \$15

Suitable for all, small friendly
classes. Come and join us!

Contact Simon 0438116991

Leigh 0403107042 or email

simon@morethanphysical.com.au

Volunteers Needed

Volunteers are needed for several
agencies in Fitzroy which support
homeless people. Some are
residential and others are day
centres.

Volunteers provide social
companionship, serve meals, share
a cuppa, and help run activity
groups and drive men and women
to medical appointments.

If you are interested in volunteering
please call **Connie** at
Shekinah Homeless Services
on 9287 5568

Library Book Group

EAST MELBOURNE LIBRARY

Second Thursday of each month

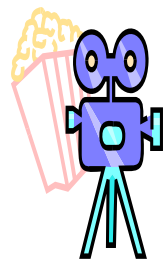
8pm – 10pm

Upstairs at the Library

122 George Street

Enquiries: Lynden Wilkie
Phone: 9486 0769

OVER 45'S SOCIAL CLUB
Join us at the movies or the theatre,
for lunch or dinner



For more information or a
newsletter, telephone Aileen on
94151906. www.life.org.au
Inner Melbourne Life Activities Club
– a not for profit group

All Creatures on Hoddle

VETERINARY HOSPITAL

1229 Hoddle Street

EAST MELBOURNE

Open: Monday – Friday

8.30am to 11am

3.00pm to 6.30pm

Saturdays

9am to 11am

TELEPHONE: 9415 8288

EAST MELBOURNE Library & Community Centre

122 George Street
EAST MELBOURNE

HOURS: Sunday Closed
Mon 12pm-6pm
Tues 1pm-8pm
Wed 10am-6pm
Thurs 1pm-6pm
Fri 1pm-6pm
Sat 10am-2pm

PHONE: 9658 9600

WEBSITE: www.melbourne.vic.gov.au/libraries

EMAIL: library@melbourne.vic.gov.au

East Melbourne Garden Club

Meets 8pm, first Tuesday
monthly

At the East Melbourne Library

122 George Street

ALL WELCOME

Non members \$2
Further details contact:
9417 4220

Pre-school story time East Melbourne Library

40-50 minutes

2-5 year olds

Through-out the year

Wednesday 11am

122 George Street

Phone: 9658 9600

Email:

library@melbourne.vic.gov.au

AGED CARE & DISABILITY SERVICES

Community Transport Program

The City of Melbourne's Community
Transport Program provides a free
bus service to older residents and
people with a disability

FOR FURTHER INFORMATION

City of Melbourne

9658 9542

PARIS APARTMENT

Quiet 2 bm, well appointed
First floor apartment
for minimum weekly rentals.

Located just 20mins walk from
Notre Dame, 10mins from
Marais and Paris Opera
and 5mins to 3 metro lines
RER and TGV.

East Melbourne owner
9419 2712
0412 196 019

Music classes for babies,
toddlers and preschoolers...

Fridays at the
East Melbourne Library



9836 2686

www.movingintomusic.com.au

Monday Morning Group

East Melbourne Neighbourhood Group
PROGRAM HIGHLIGHTS

June 2008

- Talk – Myer – a Melbourne icon
- Lunch – William Angliss Bistro
- Activity – Gentle stretching session with Allison Corsie

Come and enjoy a weekly program of
interesting activities.

FOR FURTHER INFORMATION East Melbourne Library
122 George Street City of Melbourne 9658 9929

EAST MELBOURNE HISTORICAL SOCIETY

Coming Events

DR. LIZ RUSHEN

In celebration of the centenary of women's
suffrage in Victoria Dr. Rushen will talk on
East Melbourne's Margaret McLean and her
contribution to the cause.
8.00 p.m., Wednesday, 18 June 2008

PROF. GEOFFREY BLAINEY

It is 150 years since the first game of
Australian Rules Football was played in Yarra
Park.
Prof. Blainey will talk on the origins of the sport.
8.00 p.m., Wednesday, 20 August 2008

Both talks at
Clarendon Terrace, 210 Clarendon Street
East Melbourne

Members free; guests \$5.00

Bookings essential: ring Deirdre on 9421 3252

GLEN EIRA CITY CHOIR

PROMS AT SPRINGTIME

CONDUCTOR:
JANE ELTON BROWN

SUNDAY, 14TH SEPTEMBER,

GLEN EIRA TOWN HALL
AUDITORIUM

Cnr. Glen Eira & Hawthorn Rds,
Caulfield

Ticket Enquiries: 9598 6501

\$20/\$15 conc.

MEMBERSHIP

OPEN TO ALL MEMBERS
OF THE COMMUNITY

Your local association is the
East Melbourne Group Inc.

Please fill in your details below and send to:

The Secretary
The East Melbourne Group Inc.
152 Powlett Street
East Melbourne VIC 3002

Name:.....

Address:.....

Telephone:.....
I would like to have information sent to me
about joining the EMG

Or email to admin@emg.org.au

‘WE KNOW THE NEIGHBOURHOOD. WE LOVE WHAT WE DO.’

Caine Real Estate, located in East Melbourne since 2002, values its position in the community as an informed, reputable resource for discerning investors in residential sales, executive leasing and property management.

With an auction clearance rate in excess of 90 per cent, buyers, sellers and investors can be confident Caine Real Estate has the area knowledge and professionalism to deliver optimal, issues-free results.

