



# EAST MELBOURNE NEWS

AUTUMN 2008

**COUNCIL GETS  
DOWN TO GRASS  
ROOTS IN YARRA  
PARK**

**150 YEARS OF  
AUSTRALIAN  
RULES FOOTBALL**



## The East Melbourne News

The East Melbourne News is a quarterly publication produced by the East Melbourne Group Inc. with funds provided by the City of Melbourne.



The East Melbourne Group Inc.  
152 Powlett Street  
East Melbourne 3002  
ABN 16624318008

## Editorial and Production

Editor:	Margaret Wood
News Team:	Genevieve Morgan
	Percy Schlossberger
	Frank Coppens
	Lynden Wilkie
	Bronwyn Lewis
Advertising:	Carmel Bourke
Publisher:	Composite Colour

## The East Melbourne Group Inc.

Established in 1953, the EMG is believed to be one of the oldest residents' associations in Melbourne.

It strives to preserve the heritage character of East Melbourne, protect local parks and gardens and improve the residential amenity of the area.

## East Melbourne Group Committee

### Officers:

President:	Fiona Hinrichsen
Senior Vice-president:	Frank Coppens
Junior Vice –president:	Genevieve Morgan
Secretary:	Margaret Wood
Treasurer:	Judy Batrouney

### Committee:

Joanna Pace	Brian Chaplin
Graham Shepherd	Liz Hill
Maria Wilson	Percy Schlossberger
Ian Mitchell	John Cottrell
Bill Gillies	Murray Hohnen

Advertise in the

## East Melbourne News

A circulation of 4500 copies is distributed quarterly to every residence and business mail box in East Melbourne, plus Local and State Government Offices.

### Contact:

The EMG Office  
152 Powlett Street  
East Melbourne 3002  
Phone: 03 9415 7570  
Fax: 03 9415 7546  
Email: [admin@emg.org.au](mailto:admin@emg.org.au)  
For further inquiries

# CONTENTS

Page 3	East Melbourne FESTA
Page 4	News In Brief
Page 5	Council gets down to grass roots in Yarra Park
Page 6	What's on
Page 7	150 Years of Australian Rules Football
Page 8	New Year's Eve 2007 in East Melbourne
Page 10	Planning News
Page 11	Council News
Page 12	Summer days in East Melbourne
Page 13	Crime Watch Legal Services when you need them
Page 14-15	Notice Board



FRONT COVER: Restored grasses in Yarra Park

# albumfrog

hop into it... its easy

## Photo Books

The perfect way to display all your memories



your digital images + free albumfrog software = beautiful albums & calendars

## Three simple steps - one amazing album

Now there's a fantastic new way to show off your memories by turning your digital images into photo books and calendars. Create albums of various sizes and pages on any subject you like, from a wedding or birthday to a house renovation or family holiday. Its simple, quick and fun to do.

## Download your free albumfrog software

## @ [www.albumfrog.com.au](http://www.albumfrog.com.au)





**EAST MELBOURNE**

# **FESTA**

**SUNDAY 13<sup>TH</sup> APRIL**

**11AM-3PM**

**LOTS OF FUN AND ACTIVITIES FOR ALL**

**FOOD, WINE AND REFRESHMENT STALLS**

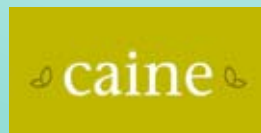
**BAND MUSIC, CRAFT STALLS, CURIOS AND COLLECTABLES STALL**

**FARM ANIMALS AND PONY RIDES**

**FACE PAINTING, SAND WIZARD AND JUMPING CASTLES**

**BUNGEE TRAMPOLINE RIDES, DOG SHOW AND HORSE AND CARRIAGE RIDES**

**ALL WELCOME!**



**THE EAST MELBOURNE GROUP INC.**  
FORMED 1953

**POWLETT RESERVE EAST MELBOURNE**  
**Cnr Albert Street & Powlett Street**

# News in Brief

## St. John's primary school moves out of East Melbourne

St. John's Primary School on the corner of Albert Street and Hoddle Street will move out of East Melbourne at the end of the year. No decision has been made about the use of the site once the school closes its doors.

St. John the Evangelist School has been pivotal in the East Melbourne community for the past 142 years. In its early years it catered for the Irish children, then in the 50s the Italian and the Greek community. In the 70s commenced the formation of the Vietnamese community in Richmond. Children from East Timor attended the school in the 90s. Today the school has a number of children from the Sudan and other African countries.

After undertaking a long strategic study into the survival of Catholic Education within inner Melbourne, the Director of Catholic Primary education has decided to amalgamate St. John's with the Trinity Catholic School in Richmond North. St. John's will move all its students to the Richmond site.

The Archdiocese believes the move will benefit local Catholic communities and deliver improved services for students.

## Pavilion Cafe changes hands

The former owner of the Pavilion Café in the Fitzroy Gardens, Spotless Food Services, has confirmed the recent sale of the business. New owners Ralph Hirsh and Maria Buglia have taken over the operation of the café with some members of the Spotless team remaining to assist during the transition period. A new menu offers an extensive range of breakfast and lunch items at reasonable prices.



**The Pavilion Café in the Fitzroy Gardens**

## Irish night at the Library

The Celtic Club and the Irish Australian Chamber of Commerce held an Irish hospitality night at the local East Melbourne Library last month.

Speakers at the function were the Ambassador of Ireland HE Mairtin O Fainin and Media analyst Anna Macdonald. Two popular magazines called *Magill* and *Village*, which reflect the current scene of political affairs, theatre and literature, were launched at the function. Organizers are hoping the Irish night will help promote the availability of these magazines at the library for those interested in the affairs of Ireland today.

## Local NAB Closes

East Melbourne's remaining bank will close its doors on the 28th March. It was in the early 90s when the National Bank moved from Wellington Parade to the corner of Victoria Parade and Lansdowne Street. Branch manager Joan Murphy said all accounts held at the East Melbourne address will be moved to the existing branch in Smith Street Collingwood.

Some residents and businesses will remember the days when there were four banks operating in Wellington Parade East Melbourne.

The old Pyman's Pharmacy on the corner of Wellington Parade and Powlett Street was the agency for the Commonwealth Bank. Andrew Pyman still has the original bank safe at his pharmacy at 84 Wellington Parade today. During his grandfather's day, the Commonwealth Bank agency moved to the Post Office in George Street in the early 50s.

Other branches included in the row of banks along Wellington Parade were the Bank of New South Wales (later becoming Westpac), the State Bank of Victoria and the National Bank.

## Break-ins hit businesses

A number of businesses were broken into during the January holiday period. 'The Pavilion' in the Fitzroy Gardens and 'V-Lounge' on the corner of Simpson Street and Wellington Parade are two of a list of traders targeted during this quiet time of the year. Owners reported thefts of shop stores and property damage to police.

your new **state of the art**  
**dental practice** offering

- ✓ professional and personalised dental care
- ✓ extended hours and saturday morning appointments
- ✓ dedicated children's slot

caring for your **lifesmile**



**dr ervan seeto** BDSC  
dental surgeon

the brew tower, tribeca, 10/166 albert street,  
east melbourne, victoria 3002

t: 03 9419 2255 f: 03 9419 2355





# Council gets down to grass roots in Yarra Park

*Cars have been forbidden to park on 3 grassed areas of Yarra Park during the summer events at the MCG.*

***The local community has supported a move by Council to keep cars off some grassed areas for greater periods to enable recovery of the park during the summer months. But is this just another cycle of rate-payers money being poured into a short-lived annual rejuvenation program?***

Council's Environment Committee asked management to report on the restoration of Yarra Park. This was delivered at the December meeting.

The report gave the results of an investigation into the condition of soils in Yarra Park and initiatives being undertaken to improve the condition of the lawns in Yarra Park.

The report said that following Grand Final Day last September, warm grasses were planted in 3 lawn areas near the Jolimont end of Yarra Park.

**The City of Melbourne proposed to the Melbourne Cricket Club that lawns 12, 13 and 14 not be used for parking until the commencement of the football season.**

This would then provide a full summer for grasses to become fully established. If the result is successful, other lawns could be similarly treated next year providing adequate watering can be allowed for. Using line-planting and sprigging techniques for the returfing of lawns, watering has been carried in by water tankers, (from the Royal Park wetlands) to aid the establishment of the grass.

The report went on to say that there were significant costs involved in the rejuvenation program and providing water to aid establishment. The risks that grass cannot become established is high unless they can have access to reasonable amounts of water and be rested from parking at least for the duration of the summer.

**Consultants engaged by council have advised that it is not possible to maintain good grass coverage over Yarra Park while it continues to be used as a car park, especially when water is not available for irrigating grass.**

**The consultants also expressed concern that the current soil profile is not desirable for car parking usage.**

Council management said it would continue to have discussions with the Melbourne Cricket Club on the matter.

Council's policy on car-parking in Yarra Park as it stands at the moment is that Council will work towards ceasing car parking at the expiry of the current Parking Agreement in 2010.

The East Melbourne Group says the initiative undertaken by City of Melbourne to prevent cars from parking on certain areas for longer periods is a step in the right direction. The Group has been a strong activist against Yarra Park being used as a car park for the sporting precinct.

It has maintained its opposition to any event or activity where access to Yarra Park is denied to the public.

"Yarra Park is a precious state and community asset. Our group's vision for the Park is a world class Melbourne park that proclaims its aboriginal heritage culture, its role in the early European settlement of Victoria, its unique history as the cradle of Australian sport and recreation and its importance to the health and wellbeing of the public users", says the East Melbourne Group.

**Below left: Cars parked close to heritage elms at the Cricket Test Series.**

**Below middle: Signage erected by Council asking drivers to keep cars away from the trees.**

**Below right: Cars parked across public walkways, blocking pedestrian usage.**



# What's on

## East Melbourne Festa

Community and Family Day  
Sunday 13 April 11am – 3pm  
Powlett Reserve  
Cnr Powlett Reserve and Albert Street  
Phone: 9415 7570

## The Johnston Collection House Museum:

Mr Thomas re-arranges Mr Johnston's  
Residence  
10 March to 13 March  
Bookings: 9416 2515  
www.johnstoncollection.org

## East Melbourne Historical Society

Winston Burchett: a life to remember  
Stephanie Alexander will talk about her  
father Winston Burchett, well known East  
Melbourne resident and local historian.  
Wednesday, 16 April - 8.00pm  
201 Clarendon Street East Melbourne

## East Melbourne Historical Society

Margaret McLean: caring power in social  
reform  
A talk by Dr. Liz Rushen  
Wednesday 18 June - 8pm  
Clarendon Terrace  
210 Clarendon Terrace  
East Melbourne

## "Little Big Shots"

Outstanding films for children  
4 Jun-9 Jun  
ACMI Cinemas, Federation Square  
Bookings: 8663 2583

## "Run for your wife"

Melbourne French Theatre  
6 May – 10 May 8pm  
Collingwood College  
Bookings: 9349 2250

## Melbourne Jazz 2008

29 March – 4 April  
Hamer Hall and Regent Theatre  
www.melbournejazz.com

## Art Melbourne 08

Collections from 100 galleries  
18 – 20 April  
Royal Exhibition Building, Carlton

## Microscope-Drawing Workshops for Children

25 March – 4 April 2008  
For children aged 7 -12  
Birrarung Marr.  
(behind Federation Square)  
Bookings: 9664 7900

## Opera in the Queen Victoria Market

Artists from Opera Australia  
65 piece orchestra  
130 voice choir  
17 and 19 March 8pm  
Bookings: 132849

## The Medieval & Renaissance Manuscripts

Treasures from 8th to 16th centuries  
28 March – 15 June  
State Library of Victoria  
Phone: 8664 7000

## "Swan Lake"

The Australian Ballet  
State Theatre, The Arts Centre  
St.Kilda Rd Melbourne  
14 March – 26 March  
Ticketmaster 136100

## Verdi's Requiem

Melbourne Symphony Orchestra  
Thursday 3 April - 8pm  
Friday 4 April - 8pm  
Saturday 5 April - 8pm  
Arts Centre, Hamer Hall

## MSO Pops - Symphonic James Bond

Saturday 29 March - 7pm  
Sunday 30 March - 2pm  
Arts Centre, Hamer Hall

## Easter Indulgence

PARK HYATT MELBOURNE™

Indulge in a delicious Easter Sunday  
buffet breakfast in Trilogy.

Celebrate Easter with the whole family and watch our chefs in  
action as they prepare a fabulous selection of waffles, pancakes,  
eggs to your liking and other delicious treats. There will also be  
a wide selection of pastries and desserts including a chocolate  
fountain to tempt you.

From 7am – 11am, with an Easter egg hunt at 10am for the kids,  
Easter at Trilogy promises to be delicious and fun for all.

\$65 adults, \$35 children (4 – 12 years).

**For bookings phone 9224 1211**

Trilogy at Park Hyatt Melbourne  
1 Parliament Square, off Parliament Place, Melbourne



# 150 Years of Australian Rules Football

**T**he early beginnings of a local game of football that emerged here in East Melbourne, has attracted the interest of many historians and sociologists over the years.

Called Australian Rules Football, the story has become a legendary tale that began 150 years ago.

Despite some writers having differing views on the date of the birth of this game of football, what is well documented is a piece of writing that suggested a game should be created to keep cricketers fit in the winter months.

Cricketer and secretary of the Melbourne Cricket Club (1857-58), Thomas Wills, wrote a column in a weekly sporting paper, *Bell's Life In Victoria*. Dated 10 July 1858, Thomas Wills opening paragraph stated:

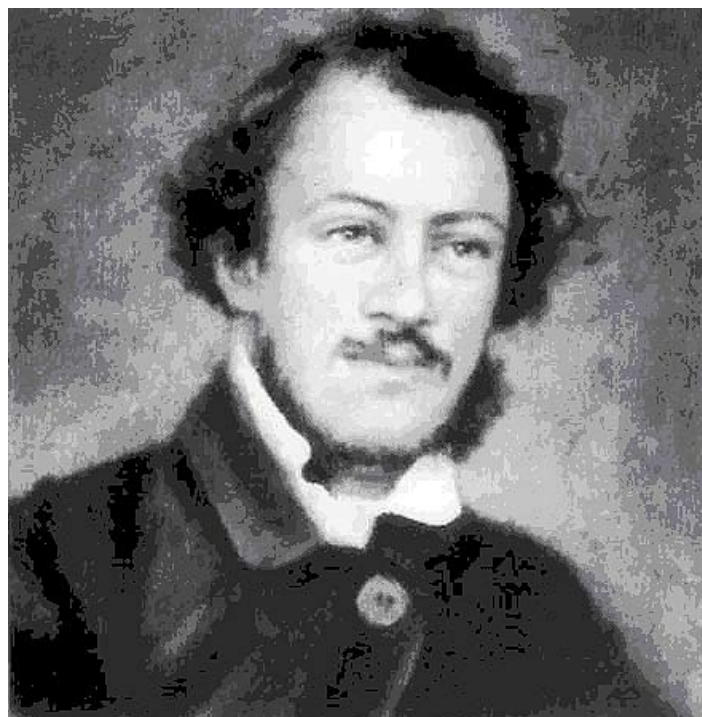
*Now that cricket has been put aside for some few months to come, and cricketers have assumed somewhat of the chrysalis nature (for the time being only, it is true), but at length again will burst forth in all their varied hues, rather than allow this state of torpor to creep over them and stifle their now supple limbs, why cannot they, I say, form a football club, and form a committee of three or more to draw up a code of laws?*

Born in Paramatta NSW, Wills was sent to Rugby School in England to be educated during his adolescent years where he played both cricket and schoolboy football. This may have influenced him to pursue the game of football upon his return to Melbourne in 1856.

A month after the publication of his column in July 1858, Wills co-impired a match with a loose set of rules between two schools from the north and south of the Yarra River.

The rival schools were Scotch College in Lansdowne Street East Melbourne and Melbourne Grammar in St. Kilda Road South Yarra. The match was played in Yarra Park in the vicinity of the MCGs location today. With 40 boys to a side and goalposts half a mile apart, the game lasted from noon until six in the evening.

Some historians say the match was to have lasted until one team scored two goals, but neither did. A round ball was used and the rules were apparently a combination of English schoolboy and Gaelic football. There is the suggestion that the considerable Irish strain in Australia's population can be attributed to the Gaelic elements in Australian Rules Football.



**Thomas Wills (1836-1880)**

Scotch was the older school with 187 students having opened seven years earlier while the newly established Melbourne Grammar had only 113 students to choose from. The match was played out over several weeks and still ended up a draw.

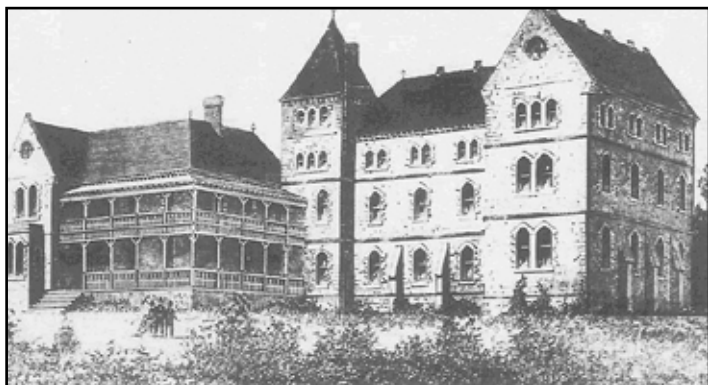
Scotch and Melbourne Grammar have continued the 'rivalry' by playing an annual match to commemorate the beginnings of this famous game.

While some sociologists recognize this game as officially the first properly organized game of Australian Rules Football, other writers make the point that it was probably another year before Melbourne cricketers kicked a football under any codified set of rules.

Tom Wills along with four other cricketers came together to draw up the first set of rules and what became the fast-scoring spectator sport it is today.

Long and accurate kicking and spectacular high 'marking' to catch the ball was sometimes sneered at as ballet dancing or 'aerial ping-pong'. In the 1920s a folk hero emerged from the South Melbourne team called Roy Cazaly. His high marking produced a roar from the crowd 'up there Cazaly'.

In addition to his part in the codifying of the first set of Rules, Wills was instrumental in the establishment of the Melbourne Football Club, once known as 'The Fuchias', and the Geelong Football Club in 1859. He later skippered the GFC for 6 years and played an estimated 172 matches until the early 1870s.



**Scotch College Lansdowne Street**



**An early football match.**







# New Years Eve 2007 in East Melbourne



A spectacular event was staged at the Hoddle Street end of George Street on New Years Eve 2007.

John Lidgerwood and a team of George Street neighbours gave the local community a night to remember. With the full support of the City of Melbourne, a great deal of planning went into the transformation of George Street in readiness for the street party.

Underneath the canopy of floodlit heritage elms, the scene was reminiscent of an outdoor cabaret. Dozens of round tables were dressed in white tablecloths and decorative centre-pieces.

Although a very hot summers night with a temperature that did not drop below the 30° mark, 250 guests arrived at 7pm dressed for the occasion. After setting up their platters of food and baskets of refreshments, residents danced the night away to the fabulous sounds of the 16-piece swing band 'Radio Rhythm Orchestra'.

Two months later the locals are still talking about this unique community event and residents are hoping the occasion will continue as an annual event.

Discussions on the next New Years Eve party have already begun.





# Planning News

## Albert Street bike lanes

The City of Melbourne's planning committee has decided to allow the introduction of bike lanes along Albert Street, between Gisborne and Hoddle Streets in East Melbourne.

To prevent any loss to the central median strips, as proposed in the planning application, council has instead agreed to reduce the width of the bike lanes.

The Notice of Decision to Grant a Permit includes an added condition that requires the installation of a tactile edge line that will separate the bike lanes from parking bays.

Local objectors believe the introduction of bike lanes along this city feeder will further exacerbate existing traffic congestion. "Engineering drawings clearly show that the allowed space for the specific bike lanes has in reality caused a reduction of one lane of traffic at all times," say objectors.

Whilst the East Melbourne Group is pleased there will be no loss to the central median strips, the Group believes Victoria Parade would be a far better location for the installation of bike lanes.

"Council's hasty decision to 'shoehorn' new bike lanes along Albert Street is premature and should not have been made without adequate canvassing of stakeholders and appropriate traffic studies to gauge the impact", said a spokesperson for the East Melbourne Group.

## Gardener's Cottage – Yarra Park

On the 18th January 2008, the City of Melbourne granted a planning permit for the demolition of the 1911 Gardeners Cottage in Yarra Park. Lengthy discussions had taken place in the past between the Council and community groups about the use of

the Gardener's Cottage as a community facility that included a community garden. Instead, Council has now decided the Cottage could go with the suggestion that the area could be returned to parkland.

## Cricket wicket nursery

The Melbourne Cricket Club has put in an application to permanently site the cricket wicket nursery where the Gardeners Cottage currently stands. Council officers recently recommended that a permit be granted to demolish the cottage.

The EMG believes a section of Yarra Park should not be sacrificed just to accommodate a cricket wicket nursery, and that the farming of turf wickets ought to be conducted off site.

With major road and rail infrastructure nearby, the opportunities for storing the wickets off-site and transporting them to and from the MCG at the start and end of each cricket season are obvious, says the East Melbourne Group.

"We fail to see why the public areas of Yarra Park should be further eroded by a commercial activity that could with proper planning be located elsewhere", said the EMG.



The Gardeners Cottage Yarra Park (1911)

## Punt Road Oval redevelopment

A 'preparatory works package' has commenced in preparation for the Punt Road Oval redevelopment. An earth mound once constructed as a turfed embankment for spectators will be removed.

Also destined for demolition is the old concrete terrace seating area on the north-eastern corner of the site and the existing 1980s club house. Old structures including entry gates, turnstiles and retaining walls will be removed. This area will then be prepared as a temporary car park to be used for over-flow parking during players' training sessions and club events.

The proposed redevelopment will provide new training and change facilities and administrative offices, merchandising accommodation and new multi-purpose function facilities.

## 16-18 Agnes Street

Local residents are concerned about the size of a proposed multi-storied building on a site in Agnes Street, Jolimont.

After negotiating with the developer for the removal of one floor from the original design, Council has decided to issue a permit for the construction of a building of approximately 21 metres or 5 storeys, at 16-18 Agnes Street.

Objectors believe the development more than doubles Council's own recommended height of 9 metres for this Mixed Use Zone of Jolimont and completely ignores the designated Level 2 Streetscape of Agnes Street.

Residents have expressed disappointment with Council planning officers for failing to respond to requests for an opportunity to discuss the proposal with Council and the developer. The matter will be heard at VCAT in May.

## CRUISEWORLD & GLOBAL TRAVELLERS

**All your travel needs  
Under one roof**

### Leisure & business

- Domestic & International
- Air, rail and tour bookings
- Cruise specialists
- Experienced consultants
- American Express card payments & services
- Foreign currency
- Travel Insurance
- Visa processing and information



*Whether it is Antarctica, Argentina, Bulgaria, Bucharest, Morocco, Malaga, Zimbabwe or Zanzibar, our expertise in the A to Z of travel is beyond compare. We can arrange your travel from beginning to end with a minimum of fuss and bother. We keep abreast of the latest specials and destinations and have the backing of the American Express Travel Services network. Call in and discuss your next adventure.*

www.globaltravellers.com.au sales@globaltravellers.com.au  
37 Victoria Parade Collingwood 3066  
Tel: 9417 3747 Fax: 9419 6577  
Members of IATA, AFTA & ICCA. Licence: 32078

## ALL CREATURES ON HODDLE VETERINARY HOSPITAL 1229 Hoddle Street, East Melbourne (Opposite Hungry Jack's)



**We offer a full range of Veterinary Services  
with free pick up and delivery, and extended hours  
to allow for evening consultations**

**Telephone: 9415 8288**

**Open 8.30 to 11am and 3 to 6.30pm Monday to Friday  
and 9 to 11am Saturdays, or by appointment**



# Council News

## Removal and replanting of street trees

Council arborists are removing a number of problematic trees in East Melbourne streets.

An aging elm well into decline in George Street at the Hoddle Street end, and thought to be about 130 years old, has been removed after being pronounced a risk to public safety.

Council will replant a young 3 metre elm in May. Two more elms showing similar signs of decline will most likely be removed next winter.

In Hotham Street, residents have been notified about the scheduled removal of a Simon Poplar, which is causing damage to surrounding infrastructure.

While a number of removals are being conducted, Council is simultaneously reviewing East Melbourne's replanting program in streets that include Clarendon, Powlett, Simpson, Grey and Hotham Streets.

Council is reconsidering its policy on plantings in footpaths. A number of melaleucas and poplars that have been deemed unsuitable as street trees, will be replaced.

## Community Connections Officers

*Community Connections Program*, established late last year, will provide

a communication link within council management and a wide range of external stakeholders including residents, businesses and visitors to the City of Melbourne.

The Officers will initiate and coordinate appropriate ways in which to resolve issues and implement solution with management advice.

The community will remember similar schemes introduced by Council over the years. There was the *Neighbourhood Officer Program* in the early 1990s in which an officer was assigned to each of the residential areas in Melbourne.

The *Community Liaison Officer Scheme* followed with a team of 12 officers. This was in turn replaced by another program called *Place Management Scheme*, managed by 4 council officers in 2005.

Just as we were remembering the name of the 2005 program, council has again changed the scheme of things and now we must get used to the *Community Connections Program*, which is being managed by two council officers.

The two Community Connections Officers, Theresa Grealy and Phillip Coyne, can be contacted on 9658 9658.

## New Outdoor Café Guide Launched

Following the launch of the new Outdoor Café Guide last month, copies of the comprehensive publication are now available to members of the community.

In the introduction of the publication, the Lord Mayor has stated that the City of Melbourne has promoted the development of a wide range of street trading as a means of enhancing the vitality of street and visitors precincts.

The Outdoor Café Guide outlines best practice design guidelines and requirements for establishing and managing outdoor cafes in 'the public place' in the City of Melbourne.

The public place is defined as the city's public environment, which provides the physical setting for all members of the community to access and enjoy cultural, social and recreational activities.

Copies can be obtained by phoning council on 9658 9658.

## Community Organisation Training 2008

The City of Melbourne is providing free training for local community organizations to build their capacity to better manage and run their associations. Training sessions have been scheduled between March and June.

Volunteers from all sectors of the community are encouraged to attend. Training topics include managing committees, communication strategies, working with the media, risk management and insurance. Bookings are essential.

Phone: 8622 4822 or Email: [commstrength@melbourne.vic.gov.au](mailto:commstrength@melbourne.vic.gov.au)



## Enjoy Business Class Accommodation at Quest East Melbourne

Easy access to Melbourne's CBD & Bridge Road Shopping Precinct. Our Business Class Package includes accommodation in a studio suite, broadband, morning newspaper & cooked breakfast at V Lounge. We'll take care of you. You take care of business.

**Quest East Melbourne**  
48 Wellington Pde  
East Melbourne VIC 3002  
Ph: 03 9413 0000



[www.questeastmelbourne.com.au](http://www.questeastmelbourne.com.au)

The Quest Serviced Apartment Group - more than 100 properties across Australia, New Zealand and Fiji.



# Summer Days in East Melbourne

Pictured below are some of the events and activities that took place in East Melbourne during the summer months.



**ABOVE:** The East Melbourne Group Christmas Drinks Party at the 'Pavilion', Fitzroy Gardens.



**ABOVE:** Test Match Australia v India



**ABOVE:** The popular Fairy Show in the Fitzroy Gardens was attended by hundreds of little fairies



**Right:** Spectators at the MCG watching the cricket



**ABOVE:** Cricket for juniors during the lunch break at the Test Match



**ABOVE:** An Irish night attended by the Irish Ambassador HE Mairtin O Fainin at the East Melbourne Library



**ABOVE:** The mounted police performing vehicle spot checks in Clarendon Street East Melbourne





# Crime Watch

Neighbourhood Watch Report  
for the area of East Melbourne  
Provided by Sergeant Warren  
Jackman of the Victoria Police for  
the period of January - February  
08. Due to privacy considerations.  
NOT all offences for this area are  
listed.

Date	Details	Location
05.01	House burglary, unlocked door	Victoria Pde
05.01	Business office burglary, no sign forced entry	Albert St
05.01	Medical centre burglary – forced rear window	Albert St
05.01	Business office attempted burglary, screwdriver	Albert St
05.01	Burglary, unspecified, forced front door	Wellington Pde
07.01	Theft from vehicle, car park	Eades St
07.01	Car park, property damage	Eades St
08.01	Theft from vehicle, smashed window	Clarendon St
10.01	Business office burglary, forced door	Victoria Pde
11.01	House burglary, front door forced, broke window	Grey St
12.01	Property damage, unit	Gipps St
14.01	Theft from motor vehicle, smashed window	Agnes St
15.01	Theft from car park	Brunton Ave
15.01	Business office burglary, front window physical force	Wellington Pde
16.01	Burglary from restaurant, forced window	Wellington Pde
16.01	Theft from vehicle in car park	Brunton Ave
17.01	Theft from vehicle in car park x 2, smashed window	Brunton Ave
18.01	Burglary from hotel/motel, broke door	Wellington Pde
18.01	Theft of bicycle from car park	Albert St
18.01	Theft from motor vehicle , smashed window	Jolimont Rd
18.01	Burglary from civic centre, no sign forced entry	Albert St
19.01	Theft of motor vehicle	Brunton Ave
19.01	Restaurant burglary, forced back door	Wellington Pde
19.01	Burglary, administration building, back door forced	Wellington Pde
20.01	Theft of motor vehicle, smashed window	Albert St
20.01	Theft from motor vehicle, smashed window	Clarendon St
21.01	Theft from motor vehicle, smashed window	Brunton Ave
25.01	Business office burglary	Palmer St
26.01	Other recreational theft	Brunton Ave
27.01	Theft from vehicle, window	Wellington Pde
30.01	Theft from vehicle, smashed window	Victoria Pde
31.01	Property damage	Victoria Pde
01.02	Theft from vehicle, window	Wellington Pde
04.02	Deception	Wellington Pde
06.02	Theft from motor vehicle, forced lock	Victoria Pde
06.02	Property damage	Eades St
07.02	Theft from vehicle, smashed window	Albert St
08.02	Burglary from hospital, forced door	Victoria Pde
09.02	Theft from vehicle, smashed window	Clarendon St
10.02	Theft from sports area	Brunton Ave
10.02	Shop stealing theft	Wellington Pde
11.02	Theft from motor vehicle	Grey St
13.02	Theft from motor vehicle	Wellington Pde
15.02	Theft from hospital	Clarendon St
16.02	Apartment burglary, key used/unlocked	Hotham St
20.02	Theft from vehicle	Landsdowne St
22.02	Theft from vehicle, smashed window	Victoria Pde
22.02	Property damage, apartment	Albert St
22.02	Property damage	Albert St
23.02	Theft from vehicle, smashed window	Victoria Pde

## Legal Services when you need them

You suddenly require the advice of a lawyer or the services of a legal firm but you are unsure as to how to locate the right lawyer for your particular need.

The Legal Referral Service of the Law Institute of Victoria provides free referrals to solicitors all over Victoria. Everyone is welcome to use this service and all referrals are to LIV members.

All solicitors included in the service agree to see clients for up to the first 30 minutes free of charge. Normal fees will be charged after the first 30 minutes or if additional work needs to be prepared on your behalf.

By phoning, emailing, or logging onto the website of the LIV Legal Referral Service, you can obtain a letter of referral to a law firm of your choice. The service does not have solicitors answering the phone and does not provide legal advice. It merely advises on where you can seek help.

If you prefer to use the net, as detailed below, the site will allow you to select the area of law you wish to consult, the region and suburb most convenient to you, and a request for a particular firm if applicable, then your own details. After filling in the required information, your referral letter can be printed out.

The next step is to contact the firm you have selected to make an appointment. Referrals are limited to 3 firms per legal matter.

The Referral Service can also help you find mediators, specialists and community legal centres.

Contact:  
Hours of operation: 9am – 5pm Monday to Friday  
LIV Legal Referral Service  
Phone: 03 9607 9550  
Email: [referrals@liv.asn.au](mailto:referrals@liv.asn.au)  
Website: [www.liv.asn.au/public/finda](http://www.liv.asn.au/public/finda)



# Notice

## Café ON ALBERT

Open 7 days  
for  
Breakfast & Lunch  
Dinner-Thursday & Friday

Fully Licensed

90 Albert Street  
East Melbourne 3002  
(opposite Tennis Centre)

Contact: 9419 0500  
UNDER NEW OWNERSHIP

Collectables &  
Curios Stall

## EAST MELBOURNE FESTA

Sunday  
13 April 2008  
For donations of china,  
glassware, old wares & books  
Phone: 9415 7570  
Email: festa@emg.org.au  
East Melbourne Group Office  
FOR COLLECTION DATES

## Library Book Group

### EAST MELBOURNE LIBRARY

Second Tuesday of each month

8pm – 10pm

Upstairs at the Library

122 George Street

Enquiries: Lynden Wilkie  
Phone: 9486 0769

## East Melbourne Garden Club

Varieties of good sized  
Hydrangeas  
FOR SALE

Visit our Stall at the  
Community Festa  
Powlett Reserve  
on  
13 April 2008

NEW MEMBERS WELCOME

Phone: Ruby 9417 4220

## Pre-school story time East Melbourne Library

40-50 minutes

2-5 year olds  
Through-out the year  
Wednesday 11am  
122 George Street  
Phone: 9658 9600

Email:  
library@melbourne.vic.gov.au

## AGED CARE & DISABILITY SERVICES

### Community Transport Program

The City of Melbourne's Community  
Transport Program provides a free  
bus service to older residents and  
people with a disability

### FOR FURTHER INFORMATION

City of Melbourne

9658 9542

## EAST MELBOURNE HISTORICAL SOCIETY

### Coming Events

STEPHANIE ALEXANDER  
will share her memories of her  
father, East Melbourne's famed  
historian  
WINSTON BURCHETT

8.00pm Wednesday 16th April  
at Clarendon Terrace  
210 Clarendon Street  
East Melbourne

Members Free, guests \$5

ALL WELCOME

Enquiries: Sylvia - 9417 2037

## GLEN EIRA CITY CHOIR

### BEETHOVEN MASS IN C

Conductor:  
Jane Elton Brown  
Mezzo Soprano: Susan  
Braadvedt  
Tenor: Petter Mander  
Baritone: Ian Cousins

Stonnington Symphony

SUNDAY 4 MAY 2008 – 2.30PM

GLEN EIRA TOWN HALL  
AUDITORIUM  
Cnr. Glen Eira & Hawthorn Rds,  
Caulfield at 2.30 pm

Ticket Enquiries: 9598 6501  
\$25, \$20 conc.

## MEMBERSHIP

OPEN TO ALL MEMBERS  
OF THE COMMUNITY

Your local association is the  
**East Melbourne Group Inc.**

Please fill in your details below and send to:

The Secretary  
The East Melbourne Group Inc.  
152 Powlett Street  
East Melbourne VIC 3002

Name:.....

Address:.....

Telephone:.....  
I would like to have information sent to me  
about joining the EMG

Or email to admin@emg.org.au

# Board

Music classes for babies,  
toddlers and preschoolers...

Fridays at the  
East Melbourne Library



**9836 2686**

[www.movingintomusic.com.au](http://www.movingintomusic.com.au)

## LADIES TENNIS GROUP

Membership Available

\$60 per year

Enquire at the courts

Hamish Phone: 9417 6511

NEW MEMBERS WELCOME

9.30AM on Thursdays at the

East Melbourne Tennis Courts

Powlett Reserve – East Melbourne

For more information phone

Norma Wykes 9419 4577

[norma.johnwykes@optusnet.com.au](mailto:norma.johnwykes@optusnet.com.au)

## First Saturday of the month

“Friends of the Library”

Meet for morning coffee

10am-12 midday

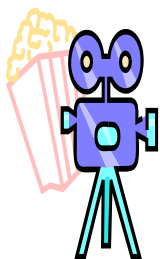
at the library upstairs

122 George Street

East Melbourne

**ALL WELCOME**

**OVER 45'S SOCIAL CLUB**  
Join us at the movies or the theatre,  
for lunch or dinner



For more information or a  
newsletter, telephone Aileen on  
94151906. [www.life.org.au](http://www.life.org.au)  
Inner Melbourne Life Activities Club  
– a not for profit group

## All Creatures on Hoddle

### VETERINARY HOSPITAL

1229 Hoddle Street

EAST MELBOURNE

Open: Monday – Friday

8.30am to 11am

3.00pm to 6.30pm

Saturdays

9am to 11am

TELEPHONE: 9415 8288

## EAST MELBOURNE Library & Community Centre

122 George Street  
EAST MELBOURNE

**HOURS:** Sunday Closed  
Mon 12pm-6pm  
Tues 1pm-8pm  
Wed 10am-6pm  
Thurs 1pm-6pm  
Fri 1pm-6pm  
Sat 10am-2pm

**PHONE:** 9658 9600

**WEBSITE:** [www.melbourne.vic.gov.au/libraries](http://www.melbourne.vic.gov.au/libraries)

**EMAIL:** [library@melbourne.vic.gov.au](mailto:library@melbourne.vic.gov.au)

## PARIS APARTMENT

Quiet 2 bm, well appointed  
First floor apartment  
for minimum weekly rentals.

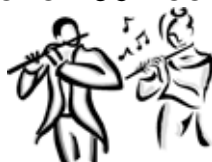
Located just 20mins walk from  
Notre Dame, 10mins from  
Marais and Paris Opera  
and 5mins to 3 metro lines  
RER and TGV.

**East Melbourne owner**  
9419 2712  
0412 196 019

**Is anyone interested in  
sharing beginners flute  
lessons?**

**Or are you learning  
a compatible  
instrument?**

**Phone Carmel on  
0409 859 003**



## Monday Morning Group

East Melbourne Neighbourhood Group  
PROGRAM HIGHLIGHTS

**March – May 2008**

- Film – Driving Lessons
- Seminar – Wills and estate planning
- Tour – St Michael's Church Collins St
- Talk – Ambulance paramedics
- Travel Talk – Jerusalem & Oriental Express (Singapore to Bangkok)
- History Tour – Abbotsford Convent

Come and enjoy a weekly program of  
interesting activities.

FOR FURTHER INFORMATION East Melbourne Library  
122 George Street City of Melbourne 9658 9929



## Prestige Division Launched

For almost 30 years Paul Caine has excelled in all things property related.

For almost 30 years Paul Caine has consistently achieved industry recognition with 10 years service and membership with REIV, as current Chairman of Central Melbourne (residential) Division of the REIV and recipient of Auctioneer of the Year Award, he is not only the principal and director of Caine Real Estate but an active member in the Caine Real Estate sales force, specializing in the mid to upper end of the prestige market.



Having recently launched the "Caine Prestige" division with prestige sale consultant, Janine Joseph, Paul and Janine make a dynamic pair. With Paul's vast experience in residential property and strong ties established in this exclusive corner of Melbourne, together with Janine's reputation as a warm and empathetic negotiator and communicator as well as her extensive experience in the period home industry, they form a unique package offering a streamline and personalised service.

The growth in this prestige sector of the market is expected to soar over the next 5 years. The duo of Paul and Janine operating within one of the area's most respected and prominent agencies is set to become an integral part of this growth. "Buyers and sellers in this part of the market want dedicated, informed professional service and that is what you will receive with Caine prestige" says Paul, with a knowing, wry smile.

## Property Management Service

With sell downs, buyouts, retirements and amalgamations there has been one constant in the Inner Suburban Property Management Market and that is Caine Real Estate. With a consistent staff and a systematic approach to communication with owners and tenants, a reliable payment processes and leading edge technology you are assured of a reliable result each time every time whether it is a studio apartment or your executive terrace home.



Call Paul Caine (Director) on 0407 393 588 or Vicki Lekanis (Property Manager) to discuss your needs



**Call the team that is serving your community.**