

# EAST MELBOURNE NEWS

AUTUMN 2009

**BATTLE STATIONS  
AT EASTERN HILL**

**ENVIRONMENT  
COUNCIL  
INVESTIGATION**

## The East Melbourne News

The East Melbourne News is a quarterly publication produced by the East Melbourne Group Inc. and sponsored by Mercy Health.

The East Melbourne Group Inc.  
152 Powlett Street  
East Melbourne 3002  
ABN 16624318008

### Editorial and Production

Editor:	Margaret Wood
News Team:	Anna Macdonald Percy Schlossberger Genevieve Morgan Lynden Wilkie Carmel Bourke
Advertising:	Composite Colour
Publisher:	

### The East Melbourne Group Inc.

Established in 1953, the EMG is believed to be one of the oldest residents' associations in Melbourne.

It strives to preserve the heritage character of East Melbourne, protect local parks and gardens and improve the residential amenity of the area.

### East Melbourne Group Committee

#### Officers:

President:	Fiona Hinrichsen
Senior Vice-president:	Genevieve Morgan
Junior Vice –president:	Percy Schlossberger
Secretary:	Anna Macdonald
Treasurer:	Brian Chaplin

#### Committee:

Natalie Forsyth	Barbara Paterson
Bill Gillies	Stuart Hamilton
Lorraine Holschke	Ian Mitchell
Margaret Wood	Joanna Pace

Advertise in the

### East Melbourne News

A circulation of 4000 copies is distributed quarterly to every residence and business mail box in East Melbourne, plus Local and State Government Offices.

#### Contact:

The EMG Office  
152 Powlett Street  
East Melbourne 3002  
Phone: 03 9415 7570  
Fax: 03 9415 7546  
Email: [admin@emg.org.au](mailto:admin@emg.org.au)  
For further inquiries

# CONTENTS

<b>Page 3</b>	Community asks Environment Council to investigate Yarra Park
	A new era of care for older residents
<b>Page 4</b>	Community office gets a refit
<b>Page 5</b>	Eastern Hill on full emergency alert
<b>Page 6</b>	What's on
<b>Page 7</b>	Hilton Hotel reviews building plans
<b>Pages 8-9</b>	New Year's Eve under the stars in George St
<b>Page 10</b>	News in brief
<b>Page 11</b>	New director at the Johnston Collection
<b>Page 12</b>	Free bus comes through East Melbourne and Jolimont
	'150 Clarendon' UPDATE
<b>Page 13</b>	Crime Watch report
<b>Pages 14-15</b>	Notice Board



The East Melbourne News is supported by the City of Melbourne's Community Grant Program.



**FRONT COVER:**  
Eastern Hill Fire Station  
East Melbourne Built 1893



# Community asks Environment Council to investigate Yarra Park

**A high level of community concern over Yarra Park has been conveyed to the Victorian Environmental Assessment Council.**

The VEAC, at the request of the Minister for Environment and Climate Change, will investigate how Crown Land contributes to the city's liveability and whether it can be improved.

It will systematically identify and assess the uses, resources, condition, values and management of Crown land and public authority land in metropolitan Melbourne.

Members of the East Melbourne community, fed up with the decline of Yarra Park, sent submissions calling for an end to the unsustainable practice of using the park as a car park for the whole of the Sports and Entertainment Precinct.

The current 5 year Yarra Park Car Parking Agreement expires at the end of 2010.

The investigation into public land in Metropolitan Melbourne by the VEAC, the first in 20 years, follows recent assessments by the Council to identify and evaluate the extent, condition, values, management, resources and uses of River Red Gum forests in National Parks.

In its recent submission to the VEAC, the East Melbourne Group has detailed its view on car parking in Yarra Park and the destruction it causes. It calls for State Government to either build a car park over the Jolimont railway yards or alternatively, introduce mandatory 'ticket and ride' program to all events.



**Above: Car parking in Yarra Park**

During the Commonwealth Games, Yarra Park was closed to car parking and public transport was included in the ticket. The arrangement was generally regarded as a successful exercise over the two week period of the Games.

---

## A new era of care for older residents



**Above: Artist's impression of Mercy Place East Melbourne**

**Opening in mid-2009, Mercy Place East Melbourne is a new service providing residential care in an elegant environment for older members of the community.**

Located at Verona Lane, off Gipps Street, Mercy Place is operated by Mercy Health, a Catholic community benefit organisation founded and owned by the Sisters of Mercy who hold a special place in local history.

For nearly 80 years the Sisters of Mercy have lived and worked in East Melbourne. They are very much part of the community and have been at the forefront of advances in health care since the establishment of Mercy Private Hospital in 1935. Their foresight ensured the building of Mercy Maternity, the iconic public hospital renamed Mercy Hospital for Women.

Opened in 1971, the hospital was the birthplace of more than 150,000 Victorians up to its relocation to Heidelberg in 2005. Mercy Hospital for Women continues to provide specialist care for women and families.

John Ballard, CEO of Mercy Health, is a resident of East Melbourne and has a personal interest in supporting the local community. "The opening of Mercy Place East Melbourne reflects our commitment to the care of our community by providing services matched to the needs of East Melbourne residents. I am delighted to continue the heritage of the Sisters of Mercy through this new facility."

*For more information on Mercy Place East Melbourne contact Annie Murphy, Director of Nursing on 9261 2014 or [amurphy@mercy.com.au](mailto:amurphy@mercy.com.au).*

# Community office gets a refit

The small heritage building in Powlett Reserve, built in 1938, has been given a make-over by the City of Melbourne.

Occupied by the East Melbourne Group for the past 4 years and used as an administrative office and meeting room, the 'Old Men's Shelter' as it is called on the Heritage Register, is also affectionately called the 'Hut' by EMG members.

The building has received new roof tiles, paint works inside and out, a new kitchenette and floor coverings. The building is also the office of the East Melbourne News.

The old roof tiles will be recycled to re-clad rotundas in city parks.

Enquiries regarding membership of the East Melbourne Group Inc., the East Melbourne News or any matters concerning the East Melbourne community, contact the 'Group's' administrator Carmel Bourke on 9415 7570 or email [admin@emg.org.au](mailto:admin@emg.org.au).



Above: Renovations on "The Hut"

---

## Council Committees restructured

**Following the election of the new Melbourne City Council, the list of Council Committees has been restructured.**

Previous Committees under the titles of Environment Committee, Marketing and Events Committee and Community Services Committee have been replaced with brand new names.

The Planning Committee together with Finance and Governance will be retained.

The six new Committees being proposed are:

Eco-City Committee; Connected City Committee; People and Creative City Committee; Docklands Coordination Committee; Inner Melbourne Action Plan Implementation Committee; Prosperous and Knowledge City Committee.

According to Council Minutes of the January meeting, the establishment of the proposed new structure will address all significant Council-related matters and spread the current work load equitably between Councillors.

Council Minutes can be viewed on the City of Melbourne website; [www.melbourne.vic.gov.au](http://www.melbourne.vic.gov.au) and by going into Council and Committee Meetings.



### the pavilion *fitzroy gardens*

*The Pavilion Fitzroy Gardens will captivate you with its panoramic views of the beautiful Fitzroy Gardens and impress you with its sophisticated cuisine and friendly atmosphere.*

*Situated right in the heart of the historic gardens, the sleekly renovated cafe is open seven days a week for breakfast, lunch and afternoon tea. With management boasting a wealth of experience in the function industry, The Pavilion offers excellent function packages for parties of up to 200 people.  
Phone 9417 2544  
or email  
[functions@thepavilionfitzroygardens.com.au](mailto:functions@thepavilionfitzroygardens.com.au)*





Pictured above: Image of 'Legend of Fire' mosaic on the exterior of the MFB building in Albert Street.

## Eastern Hill on full emergency alert

**The Metropolitan Fire Station in East Melbourne, known as Eastern Hill, is the headquarters of the Integrated Emergency Coordination Centre (IECC) where officials from multiple agencies gather to assess emergency situations and deploy more than 3000 workers in emergency services.**

On that fateful day, Black Saturday, members of the State Emergency Services (SES), the Metropolitan Fire Brigade (MFB) and Country Fire Authority officers (CFA), tracked and assessed a series of raging infernos across the State, some less than two hours drive from Melbourne.

Following warnings from the Victorian Weather Bureau at Docklands that Saturday 7 February would be a day of unprecedented fire weather, Eastern Hill swung into full alert.

In the week that followed, as Victorians struggled to comprehend the extent of the loss, it was reported that over 2000 people attended a special Mass just across the road from Eastern Hill Fire Station at St Patrick's Cathedral East Melbourne.

The tragedy claimed more than 200 lives, an astounding loss of property, live-stock and wild animals and beautiful Australian bush land. It has been reported that over 8000 people may have been displaced.

In 1939, the disaster of Friday 13 January, known as 'Black Friday', also followed a drought and a long hot summer. Fires broke out several days earlier before suddenly taking hold when northerly hot winds intensified. This tragedy claimed 71 lives and over 1000 homes were lost.

Even prior to 1939, Victoria has had a long history of bush fires dating back to 1851 when 12 lives were lost amidst fires in the Wimmera and Western District. Loss of life and property has been recorded in the years of 1898, 1905, 1906, 1926, 1932, 1943, 1944 and of course throughout the latter half of the century.

The MFB website states "the first known volunteer fire brigade operated in Melbourne in 1845. In 1890, the first fire brigade act was introduced – leading to the establishment of the Melbourne Fire Brigade (MFB) in 1891".

In 1893, on the corner of Gisborne Street and Victoria Parade, the Eastern Hill fire station with watchtower was opened and today it is the MFB's headquarters.

### **BUSH FIRE EMERGENCY APPEAL** **Send donations to the**

**RED CROSS**  
**Tel: 1800 811 700 (Freecall)**

**Cheques or Money Orders to:**  
**Red Cross**  
**GPO Box 2957**  
**Melbourne**

# What's on

## Run for the Kids

Short course 5.7k long course  
14.1k  
Starting from Alexandra Avenue  
Sunday 5 April 2009  
[www.runforthekids.com.au](http://www.runforthekids.com.au)

## 'Salt-bush- children's cheering carpet'

Art Play  
29 & 30 May  
Burrarung Marr  
Batman Ave  
[www.artplay.com.au](http://www.artplay.com.au)

## 'Murder By Chocolate'

La Mama Theatre  
205 Faraday Street Carlton  
Wed 1 April to Sun 9 April

## Royal Historical Society of Victoria

Community Treasures  
Exhibition to mark 100th  
Anniversary  
20 March to 30 June  
Melbourne Town Hall's City  
Gallery

## St John's Passion JS BACH

Melbourne Recital Centre  
Cnr Southbank Blvd and Stuart St  
19 March and 21 March  
Bookings: 9699 3333

## 'The Magic Flute' – Mozart

Opera Australia  
From 4 April to 8 May  
Arts Centre 100 St Kilda Road  
Bookings: 9685 3700

## 'Five things about Charles Darwin'

Melbourne Museum  
Nicholson Street Carlton  
Daily until 31 May

## Family History Research with Maps

State Library of Victoria  
27 April, 22 June and 31 August  
10.30-11.30am  
Meet in the foyer

## April School Holiday Programs

State Library of Victoria  
6-17 April  
Website: [www.slv.vic.gov.au](http://www.slv.vic.gov.au)  
Phone: 8664 7000

## Garden Markets

100 crafts and fresh produce stalls  
11 April, 9 May  
Observatory Gate – Botanic  
Gardens  
Birdswood Ave  
South Yarra

## Thai Culture and Food Festival

Federation Square – River Terrace  
Sunday 22 March 10am – 9pm

## Turkish Pazar Festival

Food and handcraft stalls  
Ottoman Military Band  
Queen Victoria Market  
68 Victoria Street  
29 March 9.30am – 4.00pm

## CRUISEWORLD & GLOBAL TRAVELLERS

**All your travel needs  
Under one roof**

### Leisure & business

- Domestic & International
- Air, rail and tour bookings
- Cruise specialists
- Experienced consultants
- American Express card payments & services
- Foreign currency
- Travel Insurance
- Visa processing and information



*Whether it is Antarctica, Argentina, Bulgaria, Bucharest, Morocco, Malaga, Zimbabwe or Zanzibar, our expertise in the A to Z of travel is beyond compare. We can arrange your travel from beginning to end with a minimum of fuss and bother. We keep abreast of the latest specials and destinations and have the backing of the American Express Travel Services network. Call in and discuss your next adventure.*

[www.globaltravellers.com.au](http://www.globaltravellers.com.au) [sales@globaltravellers.com.au](mailto:sales@globaltravellers.com.au)  
37 Victoria Parade Collingwood 3066  
Tel: 9417 3747 Fax: 9419 6577  
Members of IATA, AFTA & ICCA. Licence: 32078

## ALL CREATURES ON HODDLE VETERINARY HOSPITAL 1229 Hoddle Street, East Melbourne

(Opposite Hungry Jack's)



**We offer a full range of Veterinary Services  
with free pick up and delivery, and extended hours  
to allow for evening consultations**

**Telephone: 9415 8288**

**Open 8.30 to 11am and 3 to 6.30pm Monday to Friday  
and 9 to 11am Saturdays, or by appointment**



# Hilton Hotel reviews building plans

**The Thakral Group is expected to reassess its redevelopment plans for the Hilton Hotel site and adjoining land after losing a lengthy legal battle.**

The East Melbourne Group, victorious in what turned out to be a fight of 'David and Goliath' proportions, is heartened that the City Melbourne has now been reinstated as the Responsible Authority for the site.

The 'Group' says it now hopes there will be an opportunity to discuss its concerns with the new Hilton Hotel development team.

The East Melbourne Group maintains the view that components of the failed proposal would have heavily impacted upon the heritage character and residential amenity.

"These issues must be resolved to a level that is fair and reasonable for all interested parties before we give our support to any proposal", the East Melbourne Group said.

What began as a straight forward challenge against excessive expansion behind the MCG Hotel in 2001, (which was later determined before VCAT in the East Melbourne Group's favour), the saga took an unusual turn in December 2004 when the Thakral Group asked the State Government, to intervene and approve a development package.

The Site Specific Amendment (C101) approved by the Planning Minister, Ms Delahunty, introduced controls over the Hilton Hotel and adjoining land, including 'Mosspennock' in Clarendon Street.

The site package included the construction of a 15 storey building comprising 89 dwellings in Wellington Parade, a 6 storey residential building in Clarendon Street and redevelopment of 'Mosspennock' into 6 apartments, also in Clarendon Street. Further, it substituted the Minister of Planning for the City of Melbourne as the authority responsible for the site.

The Planning Minister exempted herself from all public notice requirements for a variety of reasons, one of which was that the proposal would provide much needed accommodation in time for the 2006 Commonwealth Games.

The East Melbourne Group took the view that the amendment was invalid and issued proceedings against the State Government in the Supreme Court. The Hilton Hotel joined the State Government as a party in the proceedings.

The case was dismissed by the former Justice Morris. The judgement was appealed by the East Melbourne Group to the Victorian Court of Appeal in July 2007.

On 31 October 2008, the Court of Appeal upheld the appeal, and declared the Minister's approval of Melbourne Planning Scheme Amendment C101 invalid.



**View of Mosspennock and other heritage buildings in George St.**



**View of Mosspennock and the Hilton Hotel from the Fitzroy Gardens**

The Court of Appeal held that the decision was so unreasonable as to constitute an error of law.

The East Melbourne Group says that it accepts the fact that the land adjoining the Hilton Hotel site will be developed.

However, the 'Group' has always held the view that the proposal should be determined through proper planning processes and with serious consideration to the character and amenity of the heritage area.

More importantly, the Minister for Planning must allow the community to have a voice.



# UNDER THE STARS IN GEORGE STREET

Once again the local East Melbourne community partied into the night on New Year's Eve in George Street.

The open invitation to all members of the community attracted friends, neighbours and families to a stunning night under the stars.

The 16 piece swing band "Radio Rhythm Orchestra" had all ages up on their feet dancing the night away under the fairy -lit canopy of heritage elms. The weather was perfect, (unlike the 30 plus degree heat the year before) and the white clothed tables adorned with decorations, looked spectacular.

John Lidgerwood, chief organizer and chair of the News Year's Eve sub-committee thanked the City of Melbourne for sponsoring this unique community gathering.

The East Melbourne Group applied to Council for special funding to ensure costs of infrastructure and entertainment were adequately met. East Melbourne Group administrator, Carmel Bourke, assisted with the reservation of table bookings and other administrative tasks.





# NEW YEAR'S EVE 2008



# News in Brief

## Punt Road Oval Redevelopment

On the current Capital Works Program list, Council has announced that the Punt Road Oval Redevelopment will commence construction in May 2009. The Richmond Football Club has received 20 million dollars to upgrade club facilities. Included in the proposal is an "Indigenous Centre" for aboriginal youth.

## Roundabout update

The reconstruction of two roundabouts in Powlett Street will commence in early May 2009. Works will begin at the intersection of George and Powlett Streets. It will take about 6 weeks to complete the two locations.

Council will endeavour to minimise disruptions to vehicle traffic with the implementation of a specific traffic management plan for this project. However, due to the nature of the works it is likely that some delays will be experienced.

## Trees to be removed in Cathedral Place

Four Plane Trees in the centre median of Cathedral Place have been marked for immediate removal. Other trees will be monitored closely and maintained as long as possible. Removed trees will be replaced with Deodar Cedar (*Cedrus deodara*) this winter.

## Move to bring forward revaluations of rateable properties

For the purpose of the next land tax rating period, Councillor Clarke moved at the last Council meeting that the CEO ensures that updated valuations are available to the Valuer-General for certification by January 2010.

It was also suggested that Council encourage all other local governments in Victoria to comply with the January 2010 timeline in an effort to offer potential savings for the 2010 land tax period.

## Library to lose Maple tree

The large Maple in the library forecourt is declining rapidly, most likely due to root disturbance during the redevelopment. Council has decided it cannot be retained safely. The Maple will be removed and replaced with another tree, a Red Maple (*Acer rubrum*) in winter.

## Council decides to 'retrofit' before drought-proofing parks

As reported by the Herald Sun on 6 March 2009, Council has knocked back drought-proofing parks and gardens in favour of retrofitting council buildings.

A decision by Council to put forward the 'green building model' initiative in an application to the Federal Government's Community Infrastructure Fund, was made at the last meeting with Councillor Clarke the only councillor to vote against the motion.

Whilst the drought-proofing project consisting of sewer mining and water harvesting was recognized as an important project, the Lord Mayor said the 'retrofit' plan was considered the better option for meeting the criteria of the Federal Government Infrastructure Fund.

## TV Take Back Scheme

A scheme to collect and dispose of millions of TVs when analogue transmission signals close at the end of 2013, has been supported by the Melbourne City Council. According to unconfirmed minutes of the Council meeting on 28 February, the Director of Sustainability and Regulatory Services, Geoff Lawler, undertook to provide Councillors with a briefing note in relation to the current practices in Council's Waste Transfer Stations.



**CAFÉ ON ALBERT**

**café willy**  
100% Arabica

- All Day Breakfast
- Al Fresco Dining
- Fully Licensed
- Corporate Catering
- Caffé Willy exclusively at: Café On Albert
- Phone for dinner reservations

**90 Albert St East Melbourne Phone: 03 9419 0500**

## NEW "NEWS" SPONSOR

**Mercy Health is the new sponsor of the East Melbourne News.**

This community publication, produced and distributed by the East Melbourne Group (local residents' association), has become a regular source of information and news for the past eight years.

It is only through major sponsorship from local businesses that the East Melbourne News is able to circulate 4000 copies to every letterbox in East Melbourne, Jolimont and surrounding localities.

Mercy Health has a long history of providing medical and nursing care in East Melbourne and the EMG Committee welcomes the support of Mercy Health with this project.



# New director at The Johnston Collection



**Louis Le Vaillant, newly appointed Director/Curator of The Johnston Collection took up the position in the second half of November 2008. With the Christmas festivities providing a number of social activities he is already a familiar presence around East Melbourne.**

Louis comes to us from New Zealand, with a heritage stretching back to 1841 and the early days of European settlement when there were periodic visits by the French Whaling fleet. Prior to his new appointment he was Curator of Applied Arts at Auckland War Memorial Museum Tamaki Paenga Hira where he recently completed three new permanent collection-based design and decorative arts galleries.

His career, ranging over twenty years, includes time at the Govett Brewster Art Gallery, a regional gallery in New Plymouth, which is a visual arts museum with a contemporary art collection and associated exhibition programme. Following this he was appointed Curator at the Te Tuhi Centre for the Arts, formerly the Fisher Gallery, Pakuranga, an interdisciplinary contemporary non-collection based gallery.

In November 2007 Louis was awarded the inaugural Asia:New Zealand Foundation – Museums Aotearoa grant when he completed an internship at the National Palace Museum Taiwan, one of the world's great collections.

Louis has stated that current curatorial practice is about facilitation. His approach is to encourage visitors, collectors and enthusiasts to look at objects in both new and traditional ways and to keep collections relevant to these different groups. With his experience and wide ranging interests The Johnston Collection will enter into a new and exciting era under his direction, building on the innovative and solid foundations established by the previous director, Nina Stanton, who has retired in order to write and undertake research.



## THE JOHNSTON COLLECTION

A house museum of fine and decorative arts.

The Johnston Collection is the legacy of William Johnston, an antique dealer and collector.

He left his estate to the people of Victoria for their education and enjoyment.

The collection ranges from the 17th to the 19th century and has great strengths in Georgian, Regency and Louis XV furniture, Empire and decorative arts.

For details about museum tours contact the Johnston Collection.

Telephone (03) 9416 2515

Facsimile: (03) 9416 2507

Website: [www.johnstoncollection.org](http://www.johnstoncollection.org)

# Free bus service comes through East Melbourne and Jolimont

Some members of the community may not be aware that there is a tourist bus service that comes into East Melbourne and Jolimont.

The service is free and you can jump on and hop off at key tourist attractions and destinations in and around the city.

The shuttle runs daily every 30 minutes from 9.30am to 4.30pm, excluding Good Friday and Christmas Day.

If you wish to introduce visitors to the sights of the city, go to the Jolimont bus stop located at the corner of Jolimont Terrace and Jolimont Street, just outside the Melbourne Cricket Club entrance at the MCG.

The round trip, commencing at Stop 1 outside the Arts Centre in St Kilda Road, stops at 13 locations and takes approximately 1.5 hours to complete.

- Stop 1 Arts Centre, St Kilda Rd
- Stop 2 Federation Square, Flinders St
- Stop 3 MCG Yarra Park, Jolimont St
- Stop 4 Theatre District, Exhibition St
- Stop 5 Carlton Gardens, Rathdowne St
- Stop 6 Lygon St Precinct, Lygon St
- Stop 7 Melbourne University, Grattan St
- Stop 8 Queen Vic. Market, Peel St
- Stop 9 Docklands Waterfront, Docklands Drive
- Stop 10 Docklands Stadium, Harbourside Esp
- Stop 11 Immigration Museum, William St
- Stop 12 Southbank Queensbridge St
- Stop 13 Shrine Of Remembrance Royal Botanic Gardens, Birdwood Ave



## '150 Clarendon' UPDATE

**Managing Director of Salta Properties, Sam Tarascio has announced a long-term leasing agreement for '150 Clarendon' with well-known restaurateur Mario Di Nardo.**

Mario Di Nardo plans to open Hamper, a gourmet food outlet comprising an Italian bakery, wine store, dell, and walk-in cheese room, on the corner of Grey and Clarendon Streets.

In addition to this new concept, Cristallino will also open as an antipasto wine bar and cafe featuring a selection of Australian and international wines. A delicious range of antipasto will be created on the premises.

Mario owned and operated Scusa Mi at South Gate for 12 years before opening Cocamo, Boccabar and Mama Woks at Waterfront City, Docklands. Currently, Di Nardo is running The Italian Kitchen in Chapel Street, South Yarra.



Right: '150 Clarendon' under construction





# Crime Watch

Neighbourhood Watch Report for the area of East Melbourne –  
 Provided by Sergeant Warren Jackman of the Victoria Police for the period of January - February 2009  
 Due to privacy considerations NOT all offences for this area are listed.

Date	Details	Location
04.01	Business office burglary	Wellington Pde
05.01	House burglary, front door forced	Grey St
06.01	Theft of motor vehicle	Victoria Pde
08.01	Theft from vehicle, window smashed	Brunton Ave
11.01	Theft from vehicle in car park, boot	Vale St
11.01	Theft from vehicle in car park, smashed window	Vale St
12.01	Shop steal from supermarket	Victoria Pde
16.01	Sports area theft x 2	Brunton Ave
16.01	Theft from vehicle, jemmy boot	Brunton Ave
16.01	Burglary from house, unlocked door	Victoria Pde
19.01	Theft from motor vehicle, smashed window	Gipps St
20.01	Apartment burglary, forced front door	Agnes St
22.01	Theft from vehicle in car park	Brunton Ave
22.01	Theft from vehicle, forced lock	Victoria Pde
22.01	Theft from vehicle, nil visible force	Albert St
23.01	Burglary from hospital, forced door	Victoria Pde
23.01	Theft from hospital	Victoria Pde
24.01	Theft from hospital	Victoria Pde
24.01	Theft from vehicle, nil visible force	Victoria Pde
30.01	Theft from vehicle	Brunton Ave
31.01	Theft from vehicle, smashed window	George St
01.02	Theft from vehicle	Brunton Ave
04.02	Theft from vehicle, smashed window	Hotham St
06.02	Theft from vehicle, nil visible force to boot, in garage	George St
10.02	Theft of vehicle	Brunton Ave
11.02	Burglary from house, forced entry front window	Berry St
19.02	Theft	George St
20.02	Property damage	Grey St
21.02	Apartment burglary, nil visible force	Albert St
21.02	Property damage, house	Simpson St
22.02	Theft from front yard	Albert St
22.02	Burglary, administrative property, key used x 2	Victoria Pde
24.02	Apartment burglary, forced window	Simpson St

## ST VINCENT'S SCREENING AND ASSESSMENT SERVICE

St Vincent's Screening and Assessment Service offers free mammograms every two years for women aged 50 to 69 years.

Located on the edge of East Melbourne, women of this age group are encouraged to visit the Healy Wing at St Vincent's at 41 Victoria Parade Fitzroy.

BreastScreen Victoria aims to reduce deaths from breast cancer through early detection of the disease. There are eight regional assessment centres, 40 screening centres and a Mobile Screening Service visiting more than 20 communities every two years.

*For more information, contact Carol Whitehead on 9288 2554.*



# Notice

Place your notice on this  
NOTICE BOARD

If you would like to  
advertise a community  
event or group activity,  
items to sell,  
positions vacant,  
services available,

Contact: Carmel  
9415 7570, or  
Email: [admin@emg.org.au](mailto:admin@emg.org.au)

## PODIATRIST

For all of your foot care and  
lower limb problems

Refer to [www.ja-podiatry.com](http://www.ja-podiatry.com)  
Jason Agosta Podiatry

Level 8 166 Gipps St  
East Melbourne 3002  
03 94176885

## First Saturday of the month

“Friends of the Library”

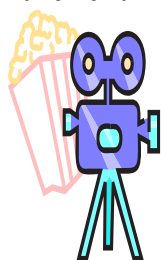
Meet for morning coffee  
10am-12 midday  
at the library upstairs

122 George Street  
East Melbourne

ALL WELCOME

## OVER 45'S SOCIAL CLUB

Join us at the movies or the theatre,  
for lunch or dinner



For more information or a  
newsletter, telephone Aileen on  
94151906. [www.life.org.au](http://www.life.org.au)  
Inner Melbourne Life Activities Club  
– a not for profit group

## MORE VOLUNTEERS

### NEEDED

For the distribution of the

East Melbourne News

If you would like to be part of the  
volunteer delivery team, call

Carmel at the EMG Office on

9415 7570  
or email to

[admin@emg.org.au](mailto:admin@emg.org.au)

## PARIS APARTMENT

Quiet 2 bm, well appointed  
First floor apartment  
for minimum weekly rentals.

Located just 20mins walk from  
Notre Dame, 10mins from  
Marais and Paris Opera  
and 5mins to 3 metro lines  
RER and TGV.

**East Melbourne owner**

9419 2712  
0412 196 019

## COMPUTER PARTS

*Disposal of waste*

Byteback Computer Recycling  
Program is the first fully sustainable  
free recycling program that  
recycles 97% of computer waste.  
Bring your old computer parts  
to Boroondara's Transfer Station  
located at 648 Riversdale Road  
Camberwell.

[www.boroondara.vic.gov.au](http://www.boroondara.vic.gov.au)

## GLEN EIRA CITY CHOIR

### THE CREATION

AN ORATORIO BY JOSEF HAYDN

SUNDAY 24TH MAY – 2.30 PM

AUBURN UNITING CHURCH

81 Oxley Rd, Hawthorn at 2.30 PM

Ticket Enquiries: 9578 1947

## Monday Morning Group

East Melbourne Neighbourhood Group

Come and enjoy a weekly  
program of interesting  
activities.

FOR FURTHER INFORMATION East Melbourne Library  
122 George Street City of Melbourne 9658 9929



# Board

## EAST MELBOURNE Library & Community Centre 122 George Street EAST MELBOURNE

**HOURS:** Sunday 2pm-5pm  
Mon 10am-6pm  
Tues 10am-8pm  
Wed 10am-6pm  
Thurs 10am-6pm  
Fri 1pm-6pm  
Sat 10am-4pm

**PHONE:** 9658 9600

**WEBSITE:** [www.melbourne.vic.gov.au/libraries](http://www.melbourne.vic.gov.au/libraries)

**EMAIL:** [library@melbourne.vic.gov.au](mailto:library@melbourne.vic.gov.au)

Find out more about

### **Carers Victoria**

Freecall: 1800 242 636

Tel: 9396 9500  
[www.carersvic.org.au](http://www.carersvic.org.au)

Carers Victoria is the statewide voice for family carers, representing and providing support to carers in the community.

Carers provide unpaid care and support to family members and friends who have a disability, mental illness, chronic condition, terminal illness or who are frail.

## Library Book Group

### **EAST MELBOURNE LIBRARY**

Second Thursday of each month

8pm – 10pm

Upstairs at the Library

122 George Street

Enquiries: East Melbourne Library  
Phone: 9658 9600

### **HERITAGE LISTED FIRE MUSEUM**

Unique collection dating back to  
1893

Run by volunteers

**OPEN**

Thursday 9.00am-3.00pm  
Friday 9.00am-3.00pm  
Sunday 10.00 – 4.00pm  
39 Gisborne Street,  
East Melbourne  
Ph: 9662 2907

## *Pre-school story time* **East Melbourne Library**

40-50 minutes

2-5 year olds  
Through out the year  
Wednesday 11am  
122 George Street  
Phone: 9658 9600  
Email:  
[library@melbourne.vic.gov.au](mailto:library@melbourne.vic.gov.au)

## **Your Biographer**

Have you ever thought that the stories and experiences of a loved one, such as an older relative should be written down?

Will you regret the loss of family stories and memories?

Your Biographer provides biography and memoir writing services.

A precious gift opportunity.  
Gift certificates can be prepared for a special event.

[www.yourbiographer.org.au](http://www.yourbiographer.org.au)  
0411 535 808

## **EAST MELBOURNE HISTORICAL SOCIETY**

### **Coming Events**

**Wednesday, 15 April, at 8.00p.m.**  
Ann Blainey, author of *I am Melba* will talk about the life of the opera singer.

**Wednesday, 17 June, at 8.00p.m.**  
Laurie Moore will tell us about the life and times of Dr. Adam Cairns and the history of the church named in his memory

Both at Clarendon Terrace,  
210 Clarendon Street, East Melbourne

Members free; Guests \$5.00  
Enquiries: Deirdre: 9421 3252

## *Lake Como Italy*



In Sala Comadina, opposite the only island of Lake Como, a rustic village house with modern conveniences, 100 metres from the lakeshore. Romantic getaway for 2 – comfortable for a group of friends or family of six. Converse with the locals; enjoy the lake cuisine; visit historic villas and gardens; designer shopping in Como and Milan; skiing in St Moritz... all on your doorstep.

Contact the owner direct or book online:  
[www.lakecomohomes.com/displayproperty.asp?p=74](http://www.lakecomohomes.com/displayproperty.asp?p=74)  
[LakeComo@pg.com.au](mailto:LakeComo@pg.com.au)

### **MEMBERSHIP**

#### **OPEN TO ALL MEMBERS OF THE COMMUNITY**

Your local association is the  
**East Melbourne Group Inc.**

Please fill in your details below and send to:

The Secretary  
The East Melbourne Group Inc.  
152 Powlett Street  
East Melbourne VIC 3002

Name:.....

Address:.....

Telephone:.....

I would like to have information sent to me  
about joining the EMG

Or email to [admin@emg.org.au](mailto:admin@emg.org.au)



# Care First.

Opening in mid-2009, Mercy Place East Melbourne sets a new standard in residential care – giving older members of the community the support, confidence and independence they need. With a legacy of care in East Melbourne reaching back to 1932, Mercy Place East Melbourne is committed to care first for residents and their families.

## A new place to call home, Mercy Place East Melbourne has:

- Live-in facilities with a dedicated lounge, dining and activities area
- The latest technology for the safety of residents and staff at all times
- A chapel, hairdresser, podiatrist and specialised activities staff, all conveniently located on the ground floor.



John Ballard | CEO Mercy Health and East Melbourne resident

*"If you see me having a coffee I would love to answer any questions you may have."*

1300 88 33 60 | [information@mercy.com.au](mailto:information@mercy.com.au) | [www.mercy.com.au](http://www.mercy.com.au)

Compassion | Respect | Innovation | Stewardship | Teamwork



Mercy Health

Care first