



EAST MELBOURNE NEWS

WINTER 2009

**AGED CARE
CENTRE
OPENING SOON**

**YARRA PARK
NOMINATED
FOR HERITAGE
LISTING**

The East Melbourne News

The East Melbourne News is a quarterly publication produced by the East Melbourne Group Inc. and sponsored by Mercy Health.

The East Melbourne Group Inc.
152 Powlett Street
East Melbourne 3002
ABN 16624318008

Editorial and Production

Editor: Margaret Wood
News Team:
Anna Macdonald
Percy Schlossberger
Genevieve Morgan
Lynden Wilkie
Advertising: Carmel Bourke
Printer: Composite Colour

East Melbourne Group Inc.

Established in 1953, the East Melbourne Group is believed to be one of the oldest residents associations in Melbourne. It strives to preserve the heritage character of East Melbourne, protect local parks and gardens and improve the residential amenity of the area.

East Melbourne Group Committee

President:	Stuart Hamilton
Senior Vice-president:	Genevieve Morgan
Junior Vice-president:	Percy Schlossberger
Secretary:	Tina Cain
Treasurer:	Brian Chaplin

Committee:	
Natalie Forsyth	Anna Macdonald
Bill Gillies	Joanna Pace
Fiona Hinrichsen	Barbara Paterson
Lorraine Holschke	Anita Steinbarth
Ian Mitchell	Margaret Wood

Advertise in the

East Melbourne News

A circulation of 4000 copies is distributed quarterly to every residence and business mail box in East Melbourne, plus local and state government offices.

Contact:

The EMG Office
152 Powlett Street
East Melbourne 3002
Phone: 03 9415 7570
Fax: 03 9415 7546
Email: admin@emg.org.au
for further inquiries

CONTENTS

Page 3	New EMG president elected at AGM
	Care first, the heart of Mercy Place
Page 4	Sculpture dominates Burston Reserve
Page 5	Yarra Park not up for grabs
Page 6	News in brief
Page 7	Tributes flow for Nina Stanton
	Yarra Park nominated for heritage listings
Pages 8-9	Fire Museum for all to enjoy
Page 10	Is the address Melbourne, East Melbourne or Jolimont?
Page 11	Garden patch
Page 12	What's on
	Sheriff's office clamps down on offenders
Page 13	Crime Watch
Pages 14-15	Notice Board



The East Melbourne News is supported by the City of Melbourne's Community Grant Program.



FRONT COVER:

A magnificent lemon-scented gum in Yarra Park.

New EMG president elected at AGM



Stuart Hamilton was elected president of the East Melbourne Group at the AGM held in April. Stuart, who is CEO of Open Universities Australia, settled in East Melbourne with his family in 2007.

EMG committee and members welcomed the new appointment following Fiona Hinrichsen's announcement that she would not be seeking re-election. The dedicated service Fiona had given the Group over the past two years was acknowledged at the AGM.

During her term as president and while working as a financial planner as well as running a busy family household, Fiona found the time to steer the committee through such major projects as the final stages of the Built Form and Height Review in East Melbourne, the complex but successful court case over the Hilton Hotel redevelopment, and the community Festa events held in Powlett Reserve.

At the AGM two other EMG members were recognised for services to the Group. Bill Gillies and Margaret Wood were both elected honorary life members for the outstanding service they had given the association over the years.

Following the formalities of the AGM, guest speaker John Ballard spoke about the soon-to-be-opened aged care facility in East Melbourne, Mercy Place.

Mr Ballard, CEO of Mercy Health, told members at the AGM that the new development was the first aged care facility to open in the City of Melbourne for more than 20 years.

Located in Gipps Street, East Melbourne, Mercy Place was described as being a new chapter in the extraordinary story of the Sisters of Mercy who came to Australia from Dublin in 1847 to provide education and social welfare.



Above left: Former EMG president Fiona Hinrichsen with incoming president Stuart Hamilton. Above: Margaret Wood (left) and Bill Gillies are presented with their honorary life membership certificates.

Care first, the heart of Mercy Place



**Annie Murphy, Service Manager
Mercy Place East Melbourne
Phone: (03) 9413 1777
Email: amurphy@mercy.com.au**

Local residents enjoyed a series of preview days that were held in May at Mercy Place East Melbourne, a new residential care facility in Verona Lane (off Gipps Street).

Officially opening in July, this architecturally designed aged care facility will provide residents with the highest level of individual care in inner Melbourne.

"We are focused on creating an environment that is like an extension of someone's home and community," says Annie Murphy, Service Manager.

"I have spent more than 30 years working with older people and I am passionate about ensuring that

we create and maintain a positive environment to support their lifestyle. We want residents, and their families, to enjoy an independent lifestyle for as long as possible."

Mercy Place East Melbourne will also provide hotel-style services for those who enjoy extra service care, such as fine dining, which will be provided by Rowland Healthcare Catering.

There has been strong interest in Mercy Place East Melbourne. Please contact Annie if you are seeking a residential facility that can provide you with individual care.

Compassion - Respect - Innovation - Stewardship - Teamwork

Sculpture dominates Burston Reserve

The tiny grassy Burston Reserve in Parliament Place East Melbourne has been adorned with 'The Great Petition'.

'The Great Petition' was created by artists Susan Hewitt and Penelope Lee and launched in December 2008 to mark the 100-year anniversary of women's right to vote in Victoria.

An entry on the Arts Victoria website says the sculpture is fabricated in rolled steel and painted in parchment, symbolising the giant petition of 30,000 signatures offered to the Victorian Parliament in 1891. The work was commissioned following a public call for designs in 2006 by the Brumby Government in collaboration with the City of Melbourne.

The large concrete sculpture representing giant folds of paper has received criticism from community groups for its size and its dominance of Burston Reserve. The sculpture is also reported to be attracting skateboarders and graffiti artists.



Paula McLoughlin Watching a Space 16 July to 8 August



'DK' Jim Pavlidis 2009 Oil on Canvas 55.5 x 52 cms

Jim Pavlidis - 16 July to 8 August



CHRYSLIS
G A L L E R Y

179 Gipps St East Melb 3002
T: (03) 9415 1977
E: prints@chrysalis.com.au

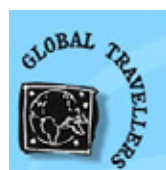
Open Tues - Fri 9.30-5.30 Sat 11-5 or view online : www.chrysalis.com.au

CRUISEWORLD & GLOBAL TRAVELLERS

**All your travel needs
Under one roof**

Leisure & business

- Domestic & International
- Air, rail and tour bookings
- Cruise specialists
- Experienced consultants
- American Express card payments & services
- Foreign currency
- Travel Insurance
- Visa processing and information



Whether it is Antarctica, Argentina, Bulgaria, Bucharest, Morocco, Malaga, Zimbabwe or Zanzibar, our expertise in the A to Z of travel is beyond compare. We can arrange your travel from beginning to end with a minimum of fuss and bother. We keep abreast of the latest specials and destinations and have the backing of the American Express Travel Services network. Call in and discuss your next adventure.

www.globaltravellers.com.au sales@globaltravellers.com.au
37 Victoria Parade Collingwood 3066
Tel: 9417 3747 Fax: 9419 6577
Members of IATA, AFTA & ICCA. Licence: 32078

Yarra Park not up for grabs

That's the message being conveyed by inner-city and city-edge park users after attempts by the MCG Trust to take over the management of Yarra Park from the City of Melbourne.



Barren ground before returfing.

Recreational park users are becoming increasingly alarmed at the attitude of the Melbourne Cricket Ground Trust over its push to control the remaining piece of public parkland.

Users of the recreational parkland are saying Yarra Park is not for the taking and that all stakeholders, including the powerful sports bodies, ought to be working towards saving the parkland from the effects of drought rather than destroying it with parked cars on match days.

In the meantime, the City of Melbourne has forbidden cars to park on two paddocks in Yarra Park during the football season. In April, the Council commenced the expensive operation of returfing the two lawns at the Jolimont end of the park, costing ratepayers \$82,417.50, excluding GST.



Deliveries of instant turf.

An earlier attempt by Council to re-grass the same area two years ago ended in dismal failure once cars were allowed back on the grassed area.

Following successful negotiations between the City of Melbourne and the Melbourne Cricket Ground Trust to permanently remove cars from the triangle of lawn near the entrance of the William Barak pedestrian bridge, park watchers are expecting sensibility to prevail over the two freshly regrassed lawns abutting Jolimont Terrace.



Laying the turf.

Inner-city park users are hoping the Melbourne Cricket Ground Trust, appointed by the State Government, will recognise the aesthetic benefits of the 'car-free' area that Council has set aside, especially when the two lawn areas are directly outside the entrance of the prestigious Melbourne Cricket Club.

The continued practice of parking up to 5700 cars on every event day for the whole of the sports and entertainment precinct has caused untold outrage by the general public.



Returfed area as it looks today.

The Yarra Park Association, supported by a large following from Richmond, East Melbourne and inner-city Yarra Park users, has embarked on an active campaign to raise awareness of the senseless destruction of the parkland.

The Melbourne City Council maintains a policy that calls for the phasing out of car parking in Yarra Park.

Your Biographer



For biography and memoir services prepared for special occasions

Contact Greg

Phone: 0411 535 808

Website: www.yourbiographer.org.au

News in Brief

World War II bomb shelter in East Melbourne found

The above ground bomb shelter at the rear of a block of apartments in Garden Avenue has caught the attention of historians after an application to demolish the structure was lodged with Council. Members of the East Melbourne Historical Society took photos as a record of the structure. Anyone with an interest in this piece of WWII history may contact the Planning Department at the City of Melbourne on 9658 9658 or visit emhs.org.au/gallery/bomb_shelter



Inside the bunker.

Works at library welcomed by users

East Melbourne Library is about to get special panels installed in the community room to improve poor acoustics. Added to the list of works is the installation of external shading outside the glass wall of the meeting room to reduce heat from the summer sun. Works to the library also include new glazing on the mezzanine floor to cushion noise levels that rise up from the main floor. Users of the library should expect some disruption during the building period.

Phone boxes disappear

Two phone boxes have suddenly been removed. One was in Clarendon Street near George Street, and the other was outside the child care centre in Grey Street. Community efforts to remove the phone box outside the child care centre in Grey Street some years ago were unsuccessful. Following observations that the booth was being used to initiate illicit drug

transactions, concerned residents living nearby and parents of children attending the centre asked Telstra to remove the box. At last there has been some action.

Festa on the 2010 calendar

A new committee is being convened in anticipation of the next East Melbourne Festa which will be held, depending on funding from the City of Melbourne, in March 2010. Community groups interested in participating are asked to contact the EMG office on 9415 7570 or festa@emg.org.au to lodge expressions of interest.

Roundabout upgrades commence

After a long campaign by the East Melbourne Group to have crumbling roundabouts rebuilt, the project has finally commenced. Works are currently in progress on the corner of George Street and Powlett Street. The other roundabout upgrade will be at Powlett and Gipps Streets. New designs for kerbing and pedestrian crossings will hopefully slow down the speed of through traffic. Included in the roundabout plans is a central circle for landscaping and an apron of blue-stone pitchers on the outer circle.

Capital works in Treasury and Fitzroy Gardens

Ponds in the Treasury and Fitzroy Gardens are being upgraded to make them more watertight. Storm water devices with pollutant traps are also being installed in the ponds. Bare turf areas will be repaired in Treasury Gardens, while in the Fitzroy Gardens, lighting in Hotham Walk is being upgraded and pathways continue to be rebuilt as part of the ongoing capital works program for the gardens.



Fitzroy Gardens in autumn.

ALL CREATURES ON HODDLE VETERINARY HOSPITAL 1229 Hoddle Street, East Melbourne

(Opposite Hungry Jack's)



**We offer a full range of Veterinary Services
with free pick up and delivery, and extended hours
to allow for evening consultations**

Telephone: 9415 8288

**Open 8.30 to 11am and 3 to 6.30pm Monday to Friday
and 9 to 11am Saturdays, or by appointment**

Tributes flow for Nina Stanton

Nina Stanton, director of the Johnston Collection Museum from 2000 to 2008, was given a heartwarming farewell by the local community and her work colleagues.

Presiding before a packed church of 400 mourners at Holy Trinity East Melbourne, Fr John Stewart said the service would not only be a celebration but a reflection of the richness of Nina's life.

Her passion for the decorative arts included such appointments as director of the Norfolk Island Museum, coordinator for the



restoration works of the Exhibition Building and the Old Treasury Building and, most recently, the directorship of the Johnston Collection Museum in East Melbourne.

During her nine years at the Johnston Collection, Nina lifted the profile of the museum with the introduction of the annual Christmas display.

Each year some of Victoria's finest craft workers were engaged to decorate the house while embracing the fine collection of decorative arts of the house.

Bookings for Christmas tours of the house were so popular that the exhibition continued well into the New Year.

Nina passed away on 2 May after a long illness. She was 61 years old.

Yarra Park nominated for heritage listings

Yarra Park has been nominated for heritage listing on the National Trust and Heritage Victoria registers.

The East Melbourne Historical Society (EMHS) believes that Yarra Park is in danger of irreparable damage and that its mature trees are heading for an early death due to the use of the land as a car park.

"The soil is seriously compacted and in large areas has been denuded of all grass, leaving top soil exposed to erosion," says the EMHS.

The National Trust of Australia has been running an Endangered Places Program since 2000. The Trust focuses on community and media interest on the kinds of threats facing heritage places, and to marshal community action and government attention to address threats facing listed places and to achieve policy changes to address the issues raised by those threats.

In its comprehensive submission to the National Trust, the EMHS says, "Yarra Park is authentic in that it has continuously been used for the purpose for which it was always intended, recreation. Yarra Park is rare in that it is a city park that allows for unstructured recreation. It is also rare because of its place in our history, both before and after European settlement."

Concurrently, the East Melbourne Group (EMG) has nominated Yarra Park for inclusion on the register of Heritage Victoria. President Stuart Hamilton has asked Ray Tonkin, Executive Director of Heritage Victoria, to recommend the parkland for listing.

In its application for nomination, the EMG refers to Yarra Park's history of Indigenous encampment before and during early European settlement, the important role of the place during the early administration of the Port Phillip District, the site of the establishment of many colonial sports clubs and the site of the birth of Australian Rules football.

The presence of Indigenous communities in Yarra Park during early settlement days cannot be overestimated. Some Aborigines were recruited into the mounted police stationed in Yarra Park, while others formed the first Aboriginal cricket team which played cricket in England.

The first known game of football was played among the trees and gentle rolling slopes of Yarra Park in 1858. It was some time before this rough and tumble game was permitted onto the turf of the Melbourne Cricket Club oval.

To enable spectators to have a better view of football matches conducted

outside the oval, an ingenious design was introduced whereby seats in the pavilion were swung around to face into the park.

Yarra Park is characterised by open grasslands, gentle slopes, an outstanding collection of native and European trees and the splendour of 495 mature English elms which line the pathway and avenues. The most noted is 'Queens Walk', named in 1889 in honour of Queen Victoria.

Below: An historic drinking fountain in Yarra Park.



Fire Museum for all to enjoy

The Eastern Hill, the highest point in Melbourne, was chosen for its elevation which would give the fire carts a downhill run whichever direction they took. The fire station was officially opened in 1893.

The fire station was destined for demolition in the early 1970s but somehow with the help of the National Trust it survived the wrecker's ball. What has also survived is the wonderful collection of heritage fire carts and memorabilia.

Visit the heritage Fire Station and see the unique collection of vintage vehicles and equipment. The intact radio room is fitted out with wonderful wood panelling by the well-known

Polish craftsman, Robert Prenzel.

Each Friday at 10.30am, the public can view a training display by the Melbourne Fire Brigade in the rear quadrangle, ideal for young children and families to watch.

MUSEUM OPENING TIMES:

Thursday 9am–3pm

Friday 9am–3pm

Sunday 10am–4pm

39 Gisborne Street,

East Melbourne

(cnr Victoria Parade)

Phone: 9662 2907





Is the address Melbourne, East Melbourne or Jolimont?

Confusion has arisen for new residents over the postal address of the soon-to-be-completed apartment tower in Wellington Parade South.

Throughout the marketing and sales campaign of the high-rise residential proposal, the developer Becton has branded the project 'One East Melbourne'.

Alongside the tower, in a companion low-rise development, Becton has also constructed 'Treasury Gardens Residence' and 'Treasury Gardens Apartments'.

At a recent meeting called by the developers to discuss completion dates of the tower at the Spring Street end of the site, new owners became perplexed at the suggestion 'One East Melbourne' was really Jolimont and not East Melbourne.

To add to the confusion, Melway maps have the building sited within the boundary of Melbourne and not East Melbourne or Jolimont.

Residents from 'Wellington Gardens', the first stage of the Becton development constructed in 1993, can recall a similar argument concerning the correct postal address. After a lengthy battle over the correct name of the location, residents were told 'Wellington Gardens' would be known as East Melbourne, and East Melbourne it has been ever since.



'One East Melbourne' in Wellington Parade South.

A SHORT WALK TO STIMULATING IDEAS

Did you know that the Australian Institute of International Affairs at nearby Dyason House features weekly speakers on timely international issues?

We invite you to come and hear our speakers at members' rates for June, July and August – some upcoming events are listed below. Join in our popular question time and enjoy some snacks and refreshments.

Monday 29 June:	"How Opium is Fuelling a World of Trouble", Mr Rodney Cocks, CSM, Counter-Narcotics Adviser, British Embassy, Kabul
Wednesday 8 July:	"A New Race to the Moon", Dr Morris Jones, Space Analyst and Author
Wednesday 22 July:	"Obama's First Six Months – and What Comes Next", Prof Geoff Garrett, Director, US Studies Centre, Sydney University

FOR MORE INFORMATION, VISIT OUR WEBSITE: www.aiia.asn.au

MENTION THIS ADVERTISEMENT FOR MEMBERS' RATES OF \$15 OR STUDENT OF \$8

Australian Institute of International Affairs Victoria
124 Jolimont Road, East Melbourne, Vic 3002

T: 03 9654 7271

F: 03 9654 6605

E: admin.vic@aiia.asn.au

W: www.aiia.asn.au

Some winter wisdom for gardeners

GARDEN PATCH

Garden Patch is a new column that will feature regularly in the EMN. Contributor Sandi Pullman maintains a number of East Melbourne gardens.

Gardening on a sunny day in winter is one of my favourite times to be outside. The jobs that I am doing at the moment are a mixture of fun and “must-do” ones. I usually start with replacing my summer annuals with winter/spring annuals because I love colourful flowers to brighten up the dull grey days of winter. At the moment there are pansies and polyanthas for sunny spots and primulas and minulus for shady spots. Cinerarias are also great for brightening up areas where there is no direct sunlight.

If you haven't put your bulbs in yet, it isn't too late - they will just flower later. A mass display of daffodils, tulips or hyacinths looks wonderful in a terracotta pot placed on your outside table. While you are waiting for the bulbs to grow, you can plant annuals over the top of them for instant colour.

Now onto some of the “must-do” jobs: sharpening our tools is one of them. Some local nurseries will do this for a small fee or you can buy a sharpening stone and do it yourself. Another job which I enjoy is pruning the roses and then spraying the ground and remaining foliage with lime sulphur. This helps to control black spot. If you are lucky enough to have fruit trees in your backyard, it is time to prune them, too. Don't forget for larger branches you need a nice sharp pruning saw.

Happy gardening, everyone.



Cinerarias for winter colour.



the pavilion *fitzroy gardens*

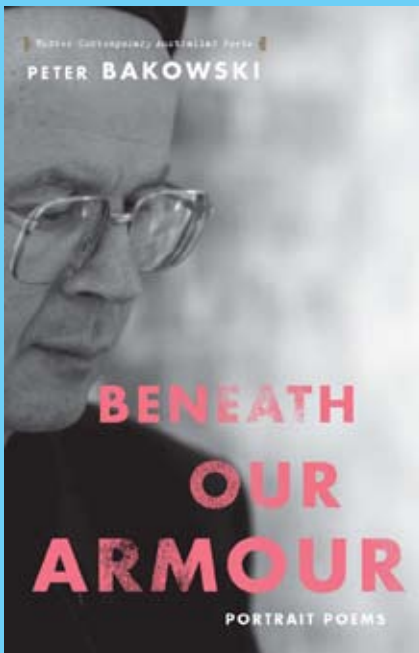
The Pavilion Fitzroy Gardens will captivate you with its panoramic views of the beautiful Fitzroy Gardens and impress you with its sophisticated cuisine and friendly atmosphere.

Situated right in the heart of the historic gardens, the sleekly renovated cafe is open seven days a week for breakfast, lunch and afternoon tea. With management boasting a wealth of experience in the function industry, The Pavilion offers excellent function packages for parties of up to 200 people. Phone 9417 2544 or email functions@thepavilionfitzroygardens.com.au

What's on

'Beneath Our Armour'

Peter Bakowski author (below)
Readings and discussion from
his new collection of poetry
Tuesday 11 August 2009
6.30pm
East Melbourne Library
122 George Street
East Melbourne



'Sharing wisdom in search of

inner peace', seminar of speakers
on faith traditions
17 June – Judaism
15 July – Christianity
19 August – Indigenous Australian
16 September – Buddhism
14 October – Islam
18 November – Hinduism
Holy Trinity Church, Cnr Clarendon
and Hotham Streets, East Melbourne
Phone: 9415 3341

Musical Treasures:

Rare Australian Chamber Concert
Piano Trio – 28 July
String Quartet – 11 August
Chamber music – 21 September
Introduced by Richard Divall
State Library Victoria
328 Swanston Street
Inquiries: 8664 7000

'Queens Hall' opened in 1856.
Formerly the main reading room at
the State Library of Victoria
Open House, 19 July, 10am–5pm

Classical Mystery Tour

30 Beatles Tunes played by the
Melbourne Symphony Orchestra
10 July at 8pm
Hamer Hall – Arts Centre
Ticket Master – 1300 136 166

'Patch Match'

Double bill – teaming classical white
ballet with ultra-modern noir
24 June–4 July
Arts Centre – State Theatre
Ticket Master: 1330 136 166

Persuasion:

Fashion in the Age of Jane Austen
National Gallery of Victoria
180 St Kilda Road
Free entry

'Watching a Space'

16 July–8 August
Chrysalis Gallery
179 Gipps Street, East Melbourne
Inquiries: 9415 1977

Birches Serviced Apartments



East Melbourne's Birches Serviced
Apartments's new water-saving
initiative is fantastic.

It's supported by Karen
Overington and Jo Duncan (above),
who are frequent guests at Birches
Serviced Apartments.

All of our apartments have a
bucket in each bathroom for guests
to help us save our gardens. With
the temperatures soaring well into
the 40s last summer, the weather
has taken its toll on our usually
gorgeous green gardens.

To thank our valued guests for
supporting our cause, we are
rewarding them with a small box
of chocolates as a token of our
appreciation.

At Birches we think globally and
are committed to saving water and
preserving our gardens.

Managing Director of Birches,

Jennie Kerr, wishes to thank all the
East Melbourne residents for their
support. "Many of our guests here
are visiting friends and family,"
Ms Kerr said. East Melbourne has
a lovely community spirit and we
always love to hear that the referral
came from a local resident.

To further extend her thanks, a
special offer to friends and family
will include a complimentary DVD
and popcorn as a welcome gift to
be enjoyed during your stay.

You can book by calling
9417 2344 or via www.birchesservicedapartments.com.au



Crime Watch

Neighbourhood Watch
Report for the area of East Melbourne, provided by Sergeant Warren Jackman of Victoria Police for the period of January-February 2009. Due to privacy considerations, NOT all offences for this area have been listed.

Sheriff's Office clamps down on offenders

The Sheriff's Office in Carlton has swooped on a number of vehicles over unpaid infringement warrants that exceed a total of \$2500. Wheel clamps immobilised a number of vehicles in East Melbourne recently, forcing owners to settle outstanding fines.



Date	Details	Location
01.03	Burglary from hospital	Jolimont Rd
02.03	Theft from motor vehicle	Hotham St
03.03	Burglary from guesthouse	George St
05.03	Theft from motor vehicle	Jolimont Rd
06.03	Burglary from apartment	Jolimont Tce
11.03	Supermarket theft	Victoria Pde
12.03	Theft from motor vehicle	Albert St
13.03	Theft from house	Wellington Pde
13.03	Deception, Bank	Victoria Pde
14.03	Bicycle theft	Wellington Pde
14.03	Theft	Brunton Ave
15.03	Theft from motor vehicle	Clarendon St
15.03	Theft from motor vehicle	Grey St
16.03	Motor vehicle theft	Victoria Pde
17.03	Theft from motor vehicle	Hotham St
21.03	Theft	Simpson St
23.03	Theft from motor vehicle	Clarendon St
25.03	Theft from motor vehicle	Wellington Pde
25.03	Theft from motor vehicle	Albert St
26.03	Theft	Brunton Ave
26.03	Theft from motor vehicle	Victoria Pde
27.03	Theft from motor vehicle	Brunton Ave
27.03	Theft from motor vehicle	Brunton Ave
28.03	House burglary	Grey St
28.03	Theft from dwelling	George St
29.03	Theft from motor vehicle	Albert St
29.03	Theft from motor vehicle	Victoria Pde
30.03	Theft from motor vehicle in carpark	Victoria Pde
31.03	Theft from front yard	Jolimont Tce
31.03	Motor vehicle theft	Albert St
02.04	House burglary	Simpson St
04.04	Theft from motor vehicle x 2	Clarendon St
07.04	Property damage – house	Gipps St
09.04	Theft from motor vehicle	Eades St
09.04	Burglary from apartment	Hotham St
11.04	Sports area theft	Brunton Ave
14.04	Theft from motor vehicle	Powlett St
14.04	Bicycle theft	Victoria Pde
16.04	Theft of motor vehicle	Victoria Pde
17.04	Theft from front yard	George St
19.04	Theft from motor vehicle	Gipps St
19.04	Bicycle theft	Jolimont Tce
19.04	Bicycle theft	Brunton Ave
20.04	Property damage	Gipps St
20.04	Burglary – house	George St
21.04	Theft from residence	Albert St
23.04	Theft from hospital	Victoria Pde
24.04	Theft from motor vehicle	Victoria Pde
24.04	Theft from motor vehicle	Albert St
24.04	Theft from motor vehicle in car-park	Albert St
26.04	Bicycle theft	Brunton Ave
30.04	Theft from motor vehicle	Albert St
02.05	Theft from motor vehicle in car-park	Brunton Ave
02.05	House burglary	Simpson St
03.05	Car-park property damage	Vale St
07.05	Theft from hospital	Clarendon St
08.05	Property damage	Albert St
08.05	Theft from sports area	Brunton Ave
09.05	Theft from house	Simpson St
11.05	Theft from motor vehicle	Vale St
12.05	Property damage	Gipps St
13.05	Theft from motor vehicle	Victoria Pde
13.05	Theft from motor vehicle	Jolimont Road
19.05	Theft from motor vehicle	Wellington Pde
20.05	Theft	Clarendon St
21.05	Theft from motor vehicle	Wellington St
23.05	Theft from sports area	Brunton Ave
23.05	Bicycle theft	Brunton Ave

Due to privacy considerations not all offences for this area are listed.

Notice

Place your notice on this
NOTICE BOARD

If you would like to advertise
a community event or group
activity,
items to sell,
positions vacant,
services available

Contact: Carmel
tel 9415 7570 or
email admin@emg.org.au

PODIATRIST

For all of your foot care and
lower limb problems

Refer to www.ja-podiatry.com
Jason Agosta Podiatry

Level 8, 166 Gipps St
East Melbourne 3002
03 9417 6885

First Saturday of the month

"Friends of the Library"

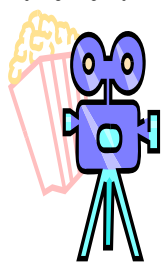
Meet for morning coffee
10am-12 midday
at the library, upstairs

122 George Street
East Melbourne

ALL WELCOME

OVER 45'S SOCIAL CLUB

Join us at the movies or the theatre,
for lunch or dinner



For more information or a
newsletter, telephone Aileen on
94151906. www.life.org.au
Inner Melbourne Life Activities Club
- a not for profit group

HOLY TRINITY CHURCH

East Melbourne

Join with Holy Trinity Parish
as we celebrate

Naidoc Week

Dinner with guest speaker
Prof. Ian Anderson
Friday 10 July

Naidoc Service
Sunday 12 July

Further inquiries
Peter Arnott: 9417 5048

PARIS APARTMENT

Quiet 2 bm, well appointed
First floor apartment
for minimum weekly rentals.

Located just 20mins walk
from

Notre Dame, 10mins from
Marais and Paris Opera
and 5mins to 3 metro lines
RER and TGV.

East Melbourne owner

9419 2712
0412 196 019

EAST MELBOURNE
Library & Community Centre
122 George Street
EAST MELBOURNE

HOURS: Sunday 2pm-5pm
Mon 10am-6pm
Tues 1pm-8pm
Wed 10am-6pm
Thurs 10am-6pm
Fri 1pm-6pm
Sat 10am-4pm

PHONE: 9658 9600
WEBSITE: www.melbourne.vic.gov.au/libraries
EMAIL: library@melbourne.vic.gov.au

GLEN EIRA CITY CHOIR SHOWTIME IN SPRING

SUNDAY 13 SEPTEMBER – 2.30 PM
GLEN EIRA TOWN HALL AUDITORIUM
Cnr GLEN EIRA & HAWTHORN RDS,
CAULFIELD

Ticket inquiries: 9578 1947

Monday Morning Group

East Melbourne Neighbourhood Group

Come and enjoy a weekly
program of interesting
activities

FOR FURTHER INFORMATION
East Melbourne Library
122 George Street City of Melbourne
9658 9929

Board

All Creatures on Hoddle

VETERINARY HOSPITAL

1229 Hoddle Street
EAST MELBOURNE

Open: Monday – Friday
8.30am to 11am
3pm to 6.30pm

Saturdays
9am to 11am
TELEPHONE: 9415 8288

Sandi's Garden Patch

Sandra Pullman

B.App.Sc (Hort).Hons.

Consultation and Maintenance

Phone:
9646 9776

Email:
sandrapullman@hotmail.com

www.gardenpatch.com.au

Library Book Group

EAST MELBOURNE LIBRARY

Second Thursday of each month

8pm – 10pm

Upstairs at the Library

122 George Street

Inquiries: East Melbourne Library
Phone: 9658 9600

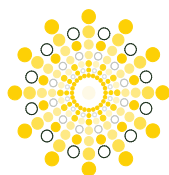
Vertical Living Kids

An inquiry into the physical activities and social wellbeing of children aged 8-13 living in high-rise apartment housing.

If your family would like to participate in the study funded by Vic Health, contact researcher Dana Mizrahi

Phone: 8344 5473
Email: mizrahi@unimelb.edu.au

Findings of the project will provide recommendations to the City of Melbourne.



EAST MELBOURNE
P S Y C H O L O G Y

www.melbournepsychology.com.au

Clinical & Counselling Psychologists
Medicare and health
fund rebates available

- Relationship Counselling
- Depression & Anxiety
- Child & Family
- Stress Management
- Hypnosis
- Work – Life Balance
- Cognitive and Interpersonal Therapy

P S Y C H O L O G Y
21 Lansdowne St
East Melbourne
9639 2866

www.melbournepsychology.com.au

Your Biographer

Have you ever thought that the stories and experiences of a loved one, such as an older relative, should be written down?

Will you regret the loss of family stories and memories?

Your Biographer provides biography and memoir writing services.

A precious gift opportunity.
Gift certificates can be prepared for a special event.

www.yourbiographer.org.au
0411 535 808

MEMBERSHIP

**OPEN TO ALL MEMBERS
OF THE COMMUNITY**

Your local association is the
East Melbourne Group Inc.

Please fill in your details below and send to:

The Secretary
The East Melbourne Group, Inc.
152 Powlett Street
East Melbourne VIC 3002

Name:.....

Address:.....

Telephone:.....

I would like to have information sent to me about joining the EMG.

Or email to admin@emg.org.au

EAST MELBOURNE HISTORICAL SOCIETY

Coming Events

Wednesday, 17 June, 8pm
Laurie Moore will tell us about the life and times of Dr Adam Cairns and the history of the church named in his memory

Wednesday, 19 August, 8pm
Dr Jo Wainer will speak on the struggle to decriminalise abortion in Victoria. In 1967, Wainer and her husband, Dr Bertram Wainer, led the campaign to reform the laws which treated abortion as a crime.

Both at Clarendon Terrace,
210 Clarendon Street, East Melbourne

Members free, Guests \$5
Inquiries: Deirdre 9421 3252



Lifestyle is important

– at any age

Mercy Health's new residential facilities offer contemporary lifestyle options for older members of the community, while our home care services can give you extra support around the house.

Mercy Place East Melbourne

Opening in July, this innovative residence offers:

- A dedicated lounge, dining and activities area
- A chapel, hairdresser, podiatrist and specialised activities staff
- The latest in comfort and safety
- Easy access to the city centre and Melbourne's iconic Fitzroy Gardens

You can choose Extra Service Care, a dedicated area with hotel-style services, recreational activities and delicious cuisine provided by Rowland Healthcare Catering.



Mercy Place Parkville

Opening in October, this stunning new retirement community offers beautiful apartments in peaceful surroundings.

At Mercy Place Parkville you will find high-quality accommodation with a community hub that includes activity spaces, shops and services. This outstanding location adjoins the flourishing Royal Park gardens.



Caring for you at home

If you or a family member needs personal care, home care, help with shopping and transport, companionship, respite or consultancy services, we can help you at any time, day or night, by calling Heather Story on 8458 4984.



Mercy Health

Care first

Aged Care Services

Phone Kerri Rivett on 9261 2015

Email: krivett@mercy.com.au

Home and Community Care

Phone Heather Story on 8458 4984

Email: hstory@mercy.com.au

Whatever your choice, our commitment is always to care first.