

east melbourne NEWS

Spring 2006

C93: Minister slow to act
Tribeca: one year on
Library opening



East Melbourne News

Is a publication of the East Melbourne Group and is published four times a year.

All inquiries can be made by contacting the East Melbourne Group office.

Telephone: 9415 7570

ABN 16624318008

www.emg.org.au

Editorial and Production

Editor:	Margaret Wood
Design:	Ken Ferns
Photography:	Percy Schlossberger
Advertising:	Carmel Bourke
Community:	Lynden Wilkie
Production	
Assistant:	Genevieve Morgan
Distribution:	Frank Coppens
Writer:	Bronwyn Lewis

East Melbourne Group Committee

President:	Margaret Wood
Vice-president:	Frank Coppens
Vice-president:	Judy Batrouney
Secretary:	Genevieve Morgan
Treasurer:	Fiona Hinrichsen
Joanna Pace	Anita Steinbarth
Brad Deacon	Liz Hill
Liz Chaplin	Percy Schlossberger
Ian Mitchell	Dominic Crain
Bill Gillies	Murray Hohnen

ADVERTISE IN THE

East Melbourne News

A circulation of 4000 copies is distributed quarterly to every residence and business mail box in East Melbourne, plus local and state government offices.

CONTACT:

EMG Office

152 Powlett Street
East Melbourne 3002

Phone: 9415 7570

Fax: 9415 7546

Email: admin@emg.org.au

For further information

CONTENTS

Page 3	Tribeca: one year on The former East Melbourne Brewery site, now a mix of residential and business, has just completed its first year of operation.
Page 4	Local Restaurant celebrates 25 years Around the East Melbourne area we are fortunate to have all styles of foods and flavours.
Page 5	What's happening to the C93 Has the new amendment C93 gone missing?
Page 5	Minister launches new strategy Minister for planning Rob Hulls launched the State Governments new hertiage strategy.
Page 6	St John's celebrates 140 years The recently restored Celtic Cross that adorns the 1901 church at St John's will commemorate 140 years of education in East Melbourne.
Page 7	Melbourne's Gardens: Public users are the losers Guest writer Margaret O'Brien is the convenor of the Carlton Gardens Group.
Page 8	New library and community centre opens It was a very special day for the East Melbourne community on the 22nd of August when the new library and community centre was officially opened.
Page 10	Annual dinner draws a crowd The annual winter dinner and fund raiser for East Melbourne Group members and friends attracted a large crowd.
Page 11	Charity begins at home As a worker in the nonprofit sector for nearly three decades I am often being asked about how to get involved.
Page 12	Pets Getaway What to do with the family pet can be a problem when planning a holiday.
Page 13	Crime watch Neighbourhood watch report for the period of May - August 2006.
Page 13	Proposed changes to Body Corporate Legislation A free education session will be conducted about the proposed changes to the Body Corporate legislation.
Page 14/15	Notice Board

FRONT COVER :

View of the interior of the 'New Community and Library Centre'

Tribeca - one year on

The former East Melbourne Brewery site, now a mix of residential and business, has just completed its first year of operation under the banner of 'Tribeca'.

Residents along with traders began to move into the unique development during mid 2005. Although two eateries have closed down recently, other businesses are flourishing. Brunellis Cafe will be re-opening soon and Eastside Cellars and Brasserie is in the midst of changing hands.

John Roach from 'Element' real estate services says apartment sales have been strong with only a few remaining unsold.

"We are looking forward to having a dental surgery in the complex very soon and IGA are hoping to open a separate delicatessen. A bakery and hairdresser are businesses we would also like to see move in", said John Roach.

Formally operated as the Carlton and United Brewery, most of the inner nineteenth century buildings were demolished, leaving the heritage protected castellated façade and the brewing towers. From the centre of the site a 14 storey residential tower was constructed to house over 400 apartments.



Tribeca building - Powlett Street, East Melbourne



Grocery Bar



Kellee Flowers

Geppetto celebrates 25 years



From left the GOM's at Geppetto's
Peter Rankin, David Barber, David Altson, Peter Hey, Ken Walton, Peter Richards, John Johnson
and Brian Roberts.
Standing: Dominic Bonadio and Ralph Bonadio

Around the East Melbourne area we are fortunate to have all styles of food and flavours. This is the first of many articles to support our local restaurants and it seems appropriate to start with a special celebration.

At Geppetto's, Dom and Ralph Bonadio have successfully looked after their East Melbourne clientele for 25 years. While we all walk in and recognize our neighbours and friends, there is one group that has been meeting for 25 years and having lunch for nearly 50 years!

Every Friday you will find the GOM's (Grumpy old men). They occupy the front table and while their beards may be greying, the sparkle in their eye says it all. Their group is so successful that they are definitely not recruiting and say that Geppetto's is their best venue.

Experience the wonderful style of rustica cucina and the great wine list. If you are lucky Francesco will play a tune with the squeezebox and it definitely saves a airfare to Italy. As a special treat for East Melbourne News readers – Geppetto's is having a 25th birthday dinner on October 20th at 7 pm – two courses \$35 (mixed pasta entrée and choice of five mains) and buy your wine as you go!

Book early on 9417 4691 as this will be a night to remember.



We have everything you would expect from a dealership that's as big as a city block – Like ample parking, coffee shop, creche and the full range of Mercedes-Benz vehicles ready to test drive without an appointment, yet for a large dealership the service is so friendly, attentive and personalised.

Mercedes-Benz of Melbourne

135 Kings Way, South Melbourne, VIC, 3205 Phone: (03) 9690 8833
www.mercedesmelbourne.com.au

A Division of DaimlerChrysler Australia/Pacific Pty. Ltd. LMCT6776 ACN 004 411 410

Enter via Miles Street from Sturt Street or do a u-turn at the lights on Kings Way. Parking available on-site.



Mercedes-Benz

What's happening to the C93? - East Melbourne's new height controls

Has the new amendment C93 gone missing?

Referred back to Minister for Planning Rob Hulls for approval, the EMG Heritage and Planning Sub-committee is beginning to wonder why the Minister has gone silent on the new amendment. It is almost one year since the City of Melbourne moved a motion that the C93, East Melbourne's new provisions on height controls, be adopted as recommended by the State Planning

Panel, but with the deletion of the term "discretionary" and replaced with "mandatory" in accordance with the height limits as exhibited.

To protect one of Victoria's most historic resident areas, the East Melbourne Group worked alongside the City of Melbourne over a period of 4 years to introduce "rock solid" planning protection for East Melbourne.

Last October 2005, the City of Melbourne submitted the amendment

as modified to the Minister for Planning for approval and as yet hasn't heard anything further.

Councillor Ng, Chair of the City of Melbourne's Planning Committee has said it is very disappointing the new amendment has been with the Minister for over 8 months. "I can't see any reason why it shouldn't be adopted," Councillor Ng said.

Minister launches new heritage strategy . . . 'Strengthening our communities'

Minister for Planning Rob Hulls launched the State Governments new heritage strategy at the Royal Exhibition building on 4th July.

Chris Gallagher, Chair of the Heritage Council, in her introduction said: "Heritage Victoria is pleased that the Bracks Government has initiated this new strategy. It will give direction and sustain the future of Victoria's heritage."

"There is more than bricks and mortar when it comes to preserving heritage. It about knowing where we have been and where we are heading", said Mr Hulls during the launch.

The State Government has earmarked \$20.5 million for the new strategy. Mr Hulls also mentioned that Victoria's heritage reflects Bracks governments efforts in supporting communities who wish to take on a hands-on approach in preserving its heritage.

In the forward of the booklet titled 'Victoria's Heritage: Strengthening our communities', Mr Hulls states, "Victoria's Heritage will ensure that the identification, protection, conservation, management and use of Victoria's diverse heritage delivers a sustainable living heritage.

This strategic framework sets a new course to ensure that heritage places, stories and memories continue to nourish communities and survive for the benefit of future generations".



Ms Chris Gallagher



Minister Rob Hulls

St John's celebrates 140 years

The recently restored Celtic Cross that adorns the 1901 church at St John's will commemorate 140 years of education in East Melbourne.

The St John the Evangelist School is located on the corner of Albert Street and Hoddle Street where the Cross is visible to thousands of drivers that pass each day.

The Celtic Cross is the largest Celtic Cross in the southern hemisphere. Archbishop Carr, who opened this building in 1901, proclaimed it a blending of Irish and Australian art. The Cross is carved from stone from Stawell with the emblems of St. John the Evangelist and St Patrick. It stands 11.3 metres tall and weighs 21 tons.

Principal Philip Cachia says St John's is actually the site of three churches and various school buildings. From 1857, the site of the present church on the corner of Victoria Parade, belonged to the Church of England (called the Parish Church of the Holy Trinity). "The Church of England built a church and a hall in 1857 which served parishioners until Archbishop Perry moved the parish to George Street in 1864. The current church was built in 1929", said Mr Cachia.

The original buildings acquired by the Catholic Church at this time, remained in service until the end of the 19th century as a Common school and Sunday school, and then later as a gymnasium. One of the parishioners can still recall "going to the fights" there on Friday nights and paying two pence to get in. An extension of the school occurred in 1889 when the two storey building in Albert Street was constructed.

St John the Evangelist School has been pivotal in the East Melbourne community for the past 140 years. In its early years it catered for the Irish children; in the 50's the Italian and the Greek community; in the 70's the Vietnamese community; in the 90's the East Timorese and today the children from Sudan and Africa.



Celtic Cross

ZIOS RESTAURANT



ITS OUR FIRST BIRTHDAY,



how the year has flown.

In a Victorian Terrace on East Melbourne's Lansdowne Street is a restaurant that, despite its elegant interior offers relaxed and informal dining. Zio's offers delicious creations at reasonable prices, impeccable service and a comprehensive wine list.

The award-winning boutique restaurant which is within walking distance to most of the city's main venues. Zios has been open for 15 years, and has earned many Chef Hats for its sophisticated yet understated menu.

Everything here is done with flair - the service, the décor, the wine list and most importantly the food.

With seating for 60 downstairs and a beautiful private room that seats 26 makes Zios perfect for intimate dining to elegant functions and parties. Zios Restaurant would like to thank all of our loyal customers for your support.

Zios opening times

Monday- Friday Lunch 12noon till 3pm

Monday- Saturday Dinner 6pm till late

Phone 9419 0252 Fax 9415 1224

Web zios.com.au

Melbourne's Gardens: Public users are the losers

Guest writer Margaret O'Brien is the convenor of the Carlton Gardens Group.

Melbourne's glorious public parks and gardens are under the stewardship of the Melbourne City Council. Unfortunately the short term commercial use of the space is jeopardising their long term preservation as the business and event imperative becomes more and more entrenched within Council. The voices in council supporting heritage are in the minority and management structures and budgets are events and marketing dominated.

Council's Contradictory policies

An example is Council's licensing of the World Heritage Carlton Gardens to the International Flower and Gardens Show (MIFGS).

Council ignores its own regulations of low impact use when it comes to the Flower Show. The no bike riding, no people or dog littering is abandoned for the Flower and Garden Show back yard blitz of heavy vehicles, cranes and bobcats, construction and demolition works. The whole southern gardens are a virtual no-go area for the public for three months every year. And yet by council's own estimates, 2 million people visit the Carlton Gardens annually. As a world heritage site it should always be accessible and at a world class standard. It isn't. The gardens and the public users are the losers.

There are other examples of heavy event use including Yarra Park as a carpark for the entire Sports Precinct, Royal Park for the Big Day Out music event, concerts in the Domain and hundreds of other smaller events.

The Carlton Gardens Group wants council to make decisions on events in public spaces in accord with legislation and their own policies on heritage protection and preservation.

It should reconcile the contradictions between its heritage and greening policies and its sponsorship of commercial events in spaces of high public significance.

It should support events held at purpose built sites, such as the newly developed Showgrounds and Birrarung Marr.

It should stem the loss of public access to public gardens and parks

Parks and Recreation low on Council's priority list

Council's current budget demonstrates the problem in getting real improvements to our gardens and parks.

Parks and Recreation's total budget is \$10.5 mill, Events and City promotion is \$18.1 mill. Council's current mantra is to make Melbourne the "Events Capital" of the world. What ever happened to the "Garden State"?

While Council is loud on promoted events it is virtually silent on heritage and gardens. And yet it is obvious they are two of Melbourne's biggest assets.

Although Carlton Gardens, along with the Royal Exhibition Building, is World Heritage listed and recognised by the UN as a "must preserve" site and an international "must see destination", its significance is ignored in the local tourism agenda. Despite lobbying by the community, there is still no public signage in Melbourne directing people to the site.

We ask council to put proposals to State and Commonwealth governments for funding of Carlton Gardens to restore the gardens back to their original condition. And we ask that it recognise the value to Melbourne of the Gardens and establish them as a key tourist destination.

Parks and gardens as a commercial commodity

The accepted truth in business that public funding of commercial events has a total economic benefit has been challenged by the community and recently the auditor general.

Despite this, Council has allocated \$2 million for sponsorship in 2006-07 budget, up from \$750,000 last year. At the same time commercial operators are not paying market rates on public space. For example, taking into account council's sponsorship and in-kind contributions, MIFGS is getting use of the Carlton Gardens rent free.

We ask Council to place higher priority on parks and gardens in its strategic objectives and management functions.

It should be increasing budgets for



Margaret O'Brien

maintenance, assets renewal and master plan implementation. And, ensuring its parks management has responsibility for decisions on use of spaces for events rather than Events Melbourne as at present.

It ought to ensure that parks and gardens are not used as a commodity for commercial benefit at the expense of the public good.

It must refuse the use of its premium gardens for high impact events. For appropriate commercial and private events, Council must charge commercial rates for usage

Furthermore, Council should charge events the cost of restitution and additional loading for loss of asset value.

East Melbourne residents might recall that the Flower Show in a smaller form was held in the Fitzroy Gardens in 1998 and 1999. The residents group lobbied council successfully for its removal and it relocated to Carlton Gardens.

Clearly the solution is more than shifting events on. All communities need to work together in countering this increasing appropriation of public space and loss of heritage. It was no surprise to learn recently that Melbourne has dropped in its ranking as a liveable city.

The Carlton Gardens Group can be contacted by emailing to:
carltongardensgroup@bigpond.com

New community centre & library opens

It was a very special day for the East Melbourne community on the 22nd of August when the new library and community centre was finally opened. This outstanding modern building with its multi-faceted glass façade of interesting angles proudly stands in George Street, surrounded by buildings of various architectural eras.

State Minister for Health, the Hon. Bronwyn Pike was in attendance, as was the Lord Mayor John So together with Councillors Peter Clarke, Fiona Sneddon and David Wilson.

The proceedings were led by Cr David Wilson, Chair of the Regional Library Board. Before opening the centre, the Lord Mayor spoke of the new building becoming the hub of community activity. "It will service the Historical Society's records and provide meeting space for the many organizations within the East Melbourne community", Cr So said.

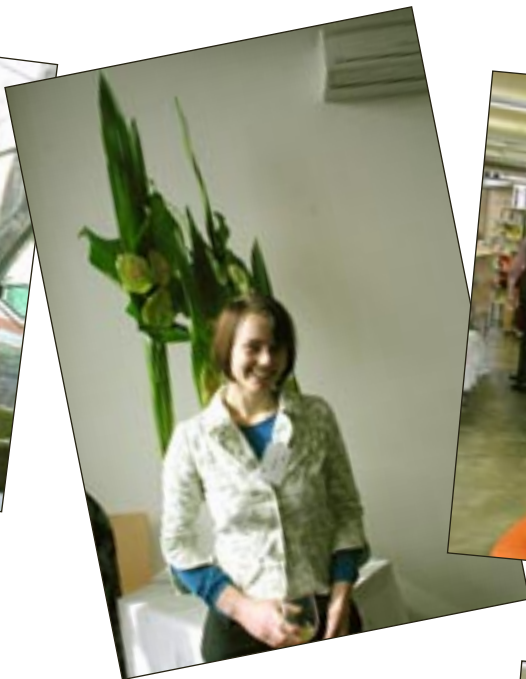
The Lord Mayor also thanked the East Melbourne Group and president Margaret Wood for the work and support they had put into the project over the years.

In his speech, principle architect Rob Adams, of the City of Melbourne, explained the heating and cooling aspects, the natural materials used and many other sustainable features of the building.

Library Corporation guests included the new CEO Elizabeth Jackson, library coordinator Jill Allen, librarian Sido and Bata Bardok, the former East Melbourne library co-ordinator.

Also in attendance was Marga Macdonald, former chair of the initial Development Steering Committee, Elizabeth Cam representing Friends of the Library, Nathan Islip project manager, Sylvia Black secretary of the Historical Society and Genevieve Morgan secretary of the East Melbourne Group.





Annual Dinner draws a crowd

The annual winter dinner and fund raiser for East Melbourne Group members and friends attracted a large crowd from the local community.

Supported by major sponsor Dingle Partners, three large houses opened their doors to host the progressive dinner.

MOYLANS Restaurant at 384 Flinders Lane brought in staff and equipment and served up delicious food and wine to 160 guests throughout the evening.

Starting at 'Eastcourt' in Powlett Street for pre-dinner drinks, guests then walked a short distance down George Street where the host had reconfigured the house to accommodate table seating for most of the guests.

Final course enabled guests to enjoyed magnificent views of the city lights from the seventh floor at 'Clarendon', on the corner of George and Clarendon Streets.

Genevieve Morgan, EMG Secretary and Social Committee convenor, said a good figure was raised making all the hard work worthwhile. Susie Norton, Social Committee member and function manager for the evening was also pleased with the results of the 'Super Raffle' that raised funds from wonderful prizes members had donated.



*"Let's do lunch ...
at Morgans at 401 or Moylans."*



Enjoy consistently fabulous food in a friendly, charming atmosphere and discover why Melbournians who know are singing the praises of Moylans and Morgans at 401.

Call to arrange an inspection of our extensive function rooms.



Moylans
384 Flinders Lane
(Bet. Queen & William Streets)



**Morgans
at 401**
401 Collins Street
(Bet. Queen & William Streets)

**For bookings and enquiries call 9223 2413
or 0423 022 014 (after hours)**

Charity begins at home

by Bronwyn Lewis

As a worker in the non profit sector for nearly three decades I am often being asked about how to get involved. The websites listed are available for connecting interest based volunteers, however if you would like to be involved close to home I have picked three local charities to focus on supporting;

LiveWires, Collingwood:

www.concernaustralia.org.au or 9416 1104

"My mum doesn't come home until 11:00pm at night, and we usually don't get dinner," said an 11 year old boy.

Of the 2,500 people living in the Collingwood Housing Estate, 500 are children. 88% of their homes are single parent homes, many of the children are left to their own devices once school has finished due to parents working long hours, or the assumption that they will be alright looking after themselves.

'LiveWires' is a new after school care program for these local children, supporting the families who often simply cannot afford the nearby fee for service program. Live Wires offers:

- Accessibility to all children
- Provision of nutritious evening meals
- Homework program
- Literacy program
- Music lessons

How you can help:

Cash donations or volunteer – one East Melbourne local has just started cooking one night a week and thanked me for the introduction as the association has given her so much pleasure.

Kids Under Cover, Richmond :

www.kuc.org.au or 9429 7444

This group raises funds to build homes and bungalows for homeless and at-risk children and young people. They also offer those same young people scholarships to explore their educational goals.

How you can help:

Give cash donations for programs or prize donations for their annual ball. Or if your car is worth over \$5,000 you can donate your car and receive a tax deduction for the value of the car. Volunteers are needed for events and sometimes house make-overs – check out their wish-list which includes things like curtains and reams of copy paper. Every little bit counts!

McAuley Foundation, Richmond

www.mcauleyfoundation.com.au

or 8419 78 02

A new health research foundation based in the Mercy Health Care network that is unique in that the research is directly linked to the operational activities and delivery. The focus is in Aged Care (the Mercy Health and Aged Care priority area) and mental health and of course

women's health (through Mercy Women's Hospital). McAuley Foundation will be a major player in programs to be based at the East Melbourne site in Gipps Street.

How you can help:

Give donations of cash, cars and artworks along with volunteering.

The big event for 2006 is Carols by Candlelight at the Abbotsford Convent on 2nd December – tickets will go on sale in November and corporate sponsorship to thank the wonderful Mercy staff is currently being sort. Volunteers are needed and will receive training and recognition for this annual event.

Websites for volunteering or donations:

www.goodcompany.com.au

www.govolunteer.com.au

www.volunteersearch.gov.au

www.volunteeringaustralia.org

Want To Make Some Changes? Not Sure How?

Early this year Katherine Bakos a Psychologist (MAPs) opened her practice in Clarendon St, East Melbourne. She has over 20 years experience in helping people to make changes and deal effectively with a wide range of issues including:

- Anxiety and depression
- Stress & sleep management
- Trauma/abuse
- Relationship/family issues
- Loss and grief
- Drug and alcohol issues
- Personal development
- Professional development
- Ineffective workplace relationships
- Conflict management
- Team building
- Clinical supervision
- Debriefing

For further information Katherine may be contacted on
Phone: 9415 1639



**CAROLS BY
CANDLELIGHT**

Abbotsford Convent
2nd December 2006
www.mcauleyfoundation.com.au
Phone: 8416 7802
Tickets available in
November



**NEW YEARS EVE 2006
IN EAST MELBOURNE**

"Big Band on the Balcony"
'Georgian Court'
George Street

Persons interested in being
part of a working group
will be meeting on
Monday, 2nd October, 2006

Phone John Lidgerwood
on 9419 6353





Pets Getaway

What to do with the family pet can be a problem when planning a holiday. But one way of overcoming this obstacle is to take them with you.

This 'getaway' has been tried and tested with great success. Byron Bay on the northern coast of New South Wales has been discovered as being very pet friendly.

The beautiful Belongil Beach on the northern side of the town is an off lease area for dogs; all year round and any time of the day. Rules for cleaning up after your dog are very strict.

Along the beach front and surrounds are rental properties that welcome pets so long as they bring their own beds.

Traveling with the pets can be done in two ways. They can fly very comfortably on your flight to either Coolangatta or Ballina, both airports being just a 45 minute journey from Byron Bay, or they can accompany you in the car.

The two day journey by car up the Newell Highway is a very pleasant experience if you plan it well. Most of the country towns have public parks for the four legged passengers to stretch the legs.

Sample some wonderful country bakeries for your meal breaks. The public park at West Wyalong is best avoided where a large pond is home to a family of 'free-range' geese and ducks. Recommended parks for 'pit-stops' are at Tocumwal, Narrandera, Tamworth, Coonabarrabran and Urulla.

The halfway mark is the small town of Gilgandra, located about 800 kilometers from Melbourne. 'Anna's Place' provides accommodation for travelers with pets. The self contained bed and breakfast wing is attached to a lovely Victorian villa belonging to Libby and Michael Birch. Michael is the local Anglican priest and will cook you a sumptuous breakfast in the grand dining room.

The best route to take over the dividing

range for the second leg to Byron Bay is from Glen Innes to Grafton where you will meander through a stunning rain forest then follow a picturesque pebbled river. As you make your way up the Pacific Highway through the great northern rivers, don't forget to stop at Ulmarra, the old historic river port.

Locals believe the nicest time of the year in Byron Bay is August and September.

Further information can be obtained about Byron Bay by logging onto:

www.byronbayfn.com.au

www.byronbayaccom.net

Recommended reading is the publication 'Holidaying with Dogs' by Willie Bedford.

You can contact 'Anna's Place' on 02 6847 2790 or mikelibby@bigpond.com



Belongil Beach, Byron Bay



want to smooth that cellulite?

then book in for the ultimate
universal contour wrap
to detox & tone up too!!!

tracey@traceyhabron.com

www.traceyhabron.com

0417 564 372

hotham st, east melbourne

tracey habron is cutting the crap





Crime Watch

Neighbourhood Watch Report for the area of East Melbourne – Provided by Sergeant Warren Jackman of the Victoria Police for the period of May -August 2006.

Due to privacy considerations NOT all offences for this area are listed.

Date	Details	Location
1/05	Theft from motor vehicle	Gipps Street
3/05	Deception, other retail	Wellington Pde
4/05	Theft from motor vehicle	Eades Street
5/05	Burglary from flat, nil visible force, unlocked/open door	Grey Street
5/05	Property damage	Gipps Street
6/05	Theft from motor vehicle, physical force, soft-top	Wellington Pde
6/05	Theft of bicycle from sports area	Brunton Ave
12/05	Theft from hospital	Victoria Parade
13/05	Burglary, forced entry, broken window	Hotham Street
16/05	Theft of bicycle from house	Victoria Parade
16/05	Medical centre theft	Clarendon Street
18/05	Theft from sports area	Brunton Ave
19/05	Theft of bicycle from street	George Street
21/05	Theft from car park, jemmy lever/screwdriver	Albert Street
24/05	Business office theft, no sign of forced entry, key used	Victoria Parade
25/05	Burglary from hotel/motel, no sign of forced entry, key used	Jolimont Road
25/05	Deception, hotel/motel	Jolimont Road
26/05	Theft from motor vehicle, smashed window	Gipps Street
27/05	Theft from motor vehicle, smashed window	Eades Street
27/05	Restaurant burglary, unlocked back door	Wellington Pde
29/05	Burglary from garage, jemmy lever or other	Wellington Pde
30/05	Burglary from school	Albert Street
30/05	Theft of bicycle from flat/apartment	Albert Street
31/05	Theft from motor vehicle	Simpson Street
2/06	Other residential theft	Berry Street
6/06	Restaurant burglary, forced back door	Wellington Pde
7/06	Theft from motor vehicle	Albert Street
7/06	Burglary from premises	George Street
12/06	Theft from motor vehicle, smashed window	Grey Street
25/06	Theft from motor vehicle, forced lock	Eades Street
30/06	Theft from motor vehicle	Gipps Street
2/07	Theft from guest house	George Street
4/07	Theft from motor vehicle	Albert Street
6/07	Theft from motor vehicle	Eades Street
7/07	Property damage at train station	Jolimont Road
8/07	Burglary from flat, no sign of forced entry	Powlett Street
12/07	Theft from motor vehicles x 2	Berry St, Gipps St
13/07	Theft from motor vehicle	Albert Street
13/07	Business office burglary, unlocked door, no sign of forced entry	Victoria Pde
14/07	Licensed premises theft	Brunton Ave
15/07	Theft of bicycle from flat	Gipps Street
18/07	Theft from motor vehicles x 2	Eades St, Agnes St
19/07	Theft from motor vehicle, smashed window	Eades St
21/07	Theft from hospital	Grey Street
21/07	Theft from motor vehicle, smashed window	Lansdowne St
29/07	Theft of vehicle, theft from vehicles in car park x 3, theft x 1	Brunton Ave
30/07	Theft from shopping complex	Victoria Pde
1/08	Theft from motor vehicle, smashed window	George St
4/08	Burglary from hotel/motel, nil visible force	Albert Street
14/08	Property damage, hospital	Victoria Pde
14/08	Theft from vehicles x 2, smashed window	George St, Vic Pde
15/08	Burglary, no sign of visible force	Victoria Pde
17/08	Theft from retail store	Wellington Pde
18/08	Theft from motor vehicle	Clarendon Street
19/08	Theft from motor vehicle	Hotham Street
20/08	Property damage to flat	Agnes Street
21/08	Theft of motor vehicle	Gipps Street
21/08	Theft from sports area	Brunton Ave
25/08	Theft from motor vehicle. Property damage to car park	Albert Street
25/08	Business office burglary, no sign of forced entry	Victoria Pde
26/08	Theft of motor vehicle. Sports area theft	Brunton Ave
26/08	Theft from motor vehicle	Albert Street
31/08	Theft from office, nil visible force	Albert Street

Proposed changes to Body Corporate Legislation

A free education session will be conducted about the proposed changes to the Body Corporate legislation. Whether you are a member of a Body Corporate or you are on the Committee, this is vital information you need to know now before the changes are enacted by the State Government in September.

Venue: The East Melbourne Library
122 George Street East Melbourne
Date and Time: Thursday 28 September at 7.30 p.m.

Speaker: Julie Van Dort LLB
No need to book. Free handout available.
Presented by Coadys Barristers and Solicitors

For further information, contact the East Melbourne Group on 94157570 or admin@emg.org.au

Bayside DRY CLEANERS

Professionals caring for your clothes

Specializing in

Wash, Dry & Fold Service
Ironing Service
Alterations & Repairs
Curtains, Drapes & Blinds
Carpet Cleaning Service
Silks, Suedes & Leathers
Continental Quilts & Doonas
Wedding Gowns
Furnishings
Shoe Repairs
Ski Wear

140 Wellington Parade
{Next to 7/11}

Phone: 9415-7059

Fax: 9415-7028

Email: baysidedrycleaners@bigpond.com

Place your notice on this

NOTICE BOARD

If you would like to advertise a community event or group activity, items to sell, positions vacant, services available.

Contact: Carmel

9415 7570

email: admin@emg.org.au

Membership is now open to
**The Buoyancy Foundation
of Victoria**
for 2006-2007

Buoyancy is a forty year old charitable drug counselling and therapeutic activities centre at 293 Punt Road Richmond

For more information contact:

Deb on 9429 3322

email: info@buoyancy.org.au

website: www.buoyancy.org.au

Bridge Evenings

Have commenced
At the new Library and
Community Centre

122 George Street
East Melbourne

NO PARTNERS NECESSARY

For more information
please contact:

Lyn Rogers 9419 6039, or
Jennifer Stanisich 9417 6110

East Melbourne now has an online website which will connect our community. Take a look at

www.eastmelbourne.org

Subscribe to our email list and be the first to know what's on where!

If you have a community group, service or business that you would like to have listed, please contact Tracey on 0417 564 372 or by email address info@eastmelbourne.org

PUBLIC FORUM

“AGEING: BEING IN CONTROL”

Introduced by Peter Couchman
presenting 5 eminent speakers
1.00 - 4.30 Saturday 14th October
Gasworks Theatre
Graham Street, Albert Park

Registration essential Ph. 94170496
Cost \$10 (concession \$5)

(Melways Ref 2J G7)

Public Transport: Tram No. 1, Stop 31.

Presented by Port Phillip and
Inner Melbourne Life Activities Clubs and
U3A Port Phillip Inc.

OVER 45's SOCIAL CLUB



JOIN US FOR DRINKS,
WALKS, JAZZ, EATING OUT
AND MORE

For more information or a
newsletter, telephone Aileen on
9415 1906. www.life.org.au
Inner Melbourne Life Activities Club
– a not for profit group.

EAST MELBOURNE HISTORICAL SOCIETY

Coming Events

AGM

Following our AGM Helen Botham, author of *La Trobe's Jolimont: A walk round my garden*, will bring La Trobe's lost garden back to life in a virtual walk using contemporary illustrations.

Wednesday, 18 October at 8.00pm
at Clarendon Terrace
210 Clarendon Street, East Melbourne

CHRISTMAS DRINKS

Join us upstairs at The Library,
122 George Street, East Melbourne,
on Wednesday,
6 December from 6.30 to 8.30
Members: \$25.00;
Non-members: \$30.00

ALL WELCOME

Enquires: Sylvia - 9417 2037

East Melbourne Festa

Sunday 25th March 2007

Powlett Reserve
11am – 3pm

You can bring along your own picnic equipment and set up camp for the day or just come along and enjoy all the diverse food and drink which will be provided by the variety of cafes and providores.

Animal Farm · Jumping Castle · Mini Golf · Kids Activities ·
Horse and Carriage Rides · the Fire Brigade · Jazz Band · Choir

If you are a local business and would like to be involved on the day, registration closes on 31st October 2006. Please contact the Committee of Management on 0418 363755 or email: festa@emg.org.au for more details.

Board

MELBOURNE SOCIETY OF WOMEN PAINTERS & SCULPTORS



16 X 20 EXHIBITION

at the

VICTORIAN ARTISTS SOCIETY

430 Albert Street, East Melbourne

OCTOBER 12 - 25, 2006

Your opportunity to purchase small paintings & sculpture in various media and styles
-Landscape - Seascape - Cityscape-
-Still Life - Portraiture-

THE IDEAL CHRISTMAS GIFT

GALLERY HOURS

Monday to Friday 10.00am - 4.00pm
Saturday & Sunday 1.30pm - 4.30pm

PARIS APARTMENT

Quiet 2 bm, well appointed
First floor apartment
for min. weekly rentals.

Located just 20 m walk from
Notre Dame, 10 m from
Marais and Paris Opera
and 5 m to 3 metro lines
RER and TGV.

East Melbourne owner

9419 2712

0412 196 019

EAST MELBOURNE Library & Community Centre

NEWLY OPENED

122 George Street
EAST MELBOURNE

HOURS: Sunday Closed
Mon 12pm-6pm
Tues 1pm-8pm
Wed 10am-6pm
Thurs 1pm-6pm
Fri 1pm-6pm
Sat 10am-2pm

LIBRARIAN: Jill Allen
PHONE: 9201 1510
Website: www.ymrl.org.au

LADIES SOCIAL NON-COMPETITIVE TENNIS GROUP

Limited Membership Available
\$60 per year (to end of September '07)

East Melbourne Tennis Centre
Powlett Reserve

9.00am to 12noon Monday to Friday
JOIN OUR THURSDAY MORNING group
(9.30 to 11'ish)

Enquire from Hamish at the courts
Ph. 9417 6511

or Phone Norma Wykes for more info
on 9419 4577
wkyses@iprimus.com.au
(after 9th October)

Volunteering for St Vincents & Mercy Private Hospital

Would you like to volunteer for a
not-for-profit private hospital
committed to providing the highest
standard of private health care in
East Melbourne?

Your contribution will assist and
support your local community as well
as helping a local icon hospital.

If you are interested in sharing your
time and offering invaluable assistance,
please contact
Tanya Smoklski on 9928 6888

East Melbourne Garden Club

Meets 8pm, first Tuesday
monthly

(2nd Tues in Nov)

At the East Melbourne Library
122 George Street

ALL WELCOME

Non Members \$2

Further details contact:
9417 4220



ST JOHN THE EVANGELIST PRIMARY SCHOOL

28 ALBERT STREET, EAST MELBOURNE.

**'EXCELLENCE IN CATHOLIC EDUCATION
SERVING THE FAMILIES WHO LIVE AND
WORK IN INNER CITY MELBOURNE'**

BEFORE & AFTER SCHOOL CARE
NOW AVAILABLE
TELEPHONE 9419 5419

2006 AND 2007 ENROLMENTS NOW OPEN

PERSONAL TRAINING

At your home, church, hospital, park etc.
(Business, private - Gov't Depts
lunch time rates available*)

- Lose Weight
- Increase your fitness
- Older adult training for individuals and groups
- Tennis and sport fitness

Fees: \$33 per hr. 1 client
\$20 per hr. 2 clients
\$15 per hr. 3 clients
* \$8 per client minimum 5

Tues 6.00 - 8.00am
2 clients \$14 per ½hr.

Contact: Ted Cousens Personal Trainer

0432 558 306

(East. Melb Resident)

MEMBERSHIP

OPEN TO ALL MEMBERS OF THE
COMMUNITY

Your local association is the
East Melbourne Group Inc.

Please fill in your details below and send to:

The Secretary
The East Melbourne Group Inc.
152 Powlett Street,
East Melbourne VIC 3002

Name:

Address:

Phone:

I would like an Information Kit sent to
me detailing the EMG Membership 2006
or email to admin@emg.org.au

East Melbourne's Property Management Specialists

■ Experience the Dingle Partners Difference

- There is no mass produced 'one size fits all' approach to property management.
- Tailor made service to suit your specific needs.
- Your needs as an owner or tenant will receive our dedicated attention everyday of the week.

**We care about your property,
like it is our own.**



Our East Melbourne team (from left) Nicole Berner,
Anton Wongtrakun, Candice Houghton

**Vacant property or looking for a
property to lease? We can help.**

- Dingle Partners offers a friendly and knowledgeable team for all your property needs.

To find out more about our services, please contact Amanda Blair TODAY on 9614 6688 or check out www.dinglepartners.com.au for more details.

■ DINGLE PARTNERS

.....

39 Queen Street,
Melbourne

128 Wellington Parade, East Melbourne
OPEN 7 DAYS 9614 6688
www.dinglepartners.com.au