

east melbourne NEWS

Autumn 2007

East Melbourne Festa



Sunday 25th March 2007
11 am - 3 pm

Lots of fun and activities including face painting, animal farm, jumping castles, bungee trampoline, sustainability presentations, dog show and much more

Bring along your glass, silver and ceramics for identification at the **Antique Roadshow** and visit the **Quilting and Art Exhibitions**

Be entertained by **Jeff Richardson, (Coodabeen Champion)**, Victoria police show band, choirs, singers, Vox Bandicoot and roving fairies

Enjoy fabulous **Food and Wine**

Powlett Reserve, Cnr Albert and Simpson Streets
East Melbourne. Mob 0418 363 755

East Melbourne Festa 2007

Sunday 25 March 2007 – 11.00am to 3.00pm

Powlett Reserve, Cnr Albert and Powlett Street, East Melbourne

COME AND ENJOY THE Inaugural East Melbourne Community Festa:

You can bring your own picnic (and deck chairs) or just come along and enjoy all the diverse food and drink (including the famous Holy Trinity Sausage Sizzle, St. John's Asian Iron Chef, George Street Coffee and Muffins and Wines to The Stars)

Master of Ceremonies Coodabeen Champion Jeff Richardson will host the day and introduce on Stage: Victoria Police Show Band, our own Danielle Soccio, Sing Australia Choir, the children of St. John's Primary School, Vox Bandicoot and NIA dance therapist Marilyn Lock. There will also be a visit from some Richmond Football Club Players.

Lots of activities for the children including Animal Farm, Jumping Castles, Bungee Trampolines, Face Painting, Horse and Carriage Rides and a visit from the Fire Brigade. Children can visit the Sand Wizard and create their own Sand Masterpiece to laminate and take home and be enthralled by wandering Fairies, Balloon Sculptors and enter the Colouring In Competition.

Come along to the Sustainability Marquee where you can take part in 20 minute presentations and activities. Don't forget to view the sustainable living displays and pick up some great give-aways. Enter the competition to win your own worm farm! Visit the Flexicar, Environment Shop and the Balcony Garden Marquees and learn many new ways to save Water.

Bring along your prized piece to our Antique Roadshow for identification and discussion. Visit The Johnston Collection, Museum of Fine and Decorative Arts marquee and meet Ceramic, Silver and Glass specialists who will be only too happy to help you understand the historic value of your family heirloom. You may also find something special to purchase at the EMG Collectables and Curios Market Marquee.

Bring your beloved well behaved dog and visit the Lost Dogs' Home Marquee to discuss your pet's appropriate Registration and Care.

Enter your Dog at the Laundry Mutt Marquee to win a great prize in the Dog Show (Gold Coin Donation to the Lost Dogs' Home) sponsored by Laundry Mutt.

Prizes for Best Large, Best Small and Best in Show.

Registrations between 11.00am and 12 noon.

Judging will take place at 1.00pm.

There will be a wonderful Art Exhibition and Sale by the Melbourne Society of Women Painters and Sculptors and also a Display and Sale of Beautiful and Interesting Quilts.





East Melbourne News

Is a publication of the East Melbourne Group Inc. Four editions are circulated each year.

Further inquiries can be made to the EMG office.

152 Powlett Street
East Melbourne 3002

Telephone: 9415 7570

ABN 16624318008

www.emg.org.au

Editorial and Production

Editor: Margaret Wood
Production: Genevieve Morgan
Design: Ken Ferns
Photography: Percy Schlossberger
Advertising Sales: Carmel Burke
Percy Schlossberger
Community: Lynden Wilkie
Bronwyn Lewis
Distribution: Frank Coppens
Accounts: Carmel Burke

East Melbourne Group Committee

President: Fiona Hinrichson
Vice-president: Frank Coppens
Vice-president: Judy Batrouney
Secretary: Margaret Wood
Treasurer: Judy Batrouney
Committee:
Liz Chaplin Liz Hill
Brad Deacon Percy Schlossberger
Ian Mitchell Bill Gillies
Joanna Pace Murray Hohnen

ADVERTISE IN THE

East Melbourne News

A circulation of 4000 copies is distributed quarterly to every residence and business mail box in East Melbourne, plus local and state government offices.

CONTACT:

EMG Office

152 Powlett Street
East Melbourne 3002

Phone: 9415 7570

Fax: 9415 7546

Email: admin@emg.org.au

For further information

CONTENTS

Page 2	East Melbourne Festa
Page 4/5	Featured Article: Tree Survival vs Events City of Melbourne is putting up temporary fencing to keep cars away from struggling trees in Yarra Park.
Page 6	Travelling South East Melbourne couple, Sue and Percy Schlossberger have just returned from an adventure to Antarctica.
Page 7	New President Appointed The East Melbourne Group has appointed a new President
Page 7	The Ashes Urn and the East Melbourne Connection A special exhibition featuring the Ashes Urn at the Melbourne Museum.
Page 7	Planning News
Page 8/9	East Melbourne Treasures go on Show State Library of Victoria Foundation introduces a special collection to residents.
Page 10	Schools in at St John's St John the Evangelist Primary School in East Melbourne has started the school year with an influx of new students.
Page 10	New Aged Care Facility for East Melbourne A new aged care facility will be built in Gipps Street by Salta Properties.
Page 11	End of Year Get Together The East Melbourne Group members enjoy their end of year get together.
Page 12	News in Brief
Page 12	New Years Eve in East Melbourne 2007 East Melbourne will be staging its own community New Years Eve party this year in George Street.
Page 12	Police on the beat Residents warned after a series of break ins. Bag snatcher meets his match.
Page 13	Crime Watch Neighbourhood watch report for period December 2006 - January 2007
Page 13	What's on
Page 14/15	Notice Board



Morgans
at 401



Tree Survival versus Events

City of Melbourne is putting up temporary fencing to keep cars away from struggling trees in Yarra Park. The community says car parking should be stopped, if not drastically reduced. Council says this is not an option.

Respite from car-parking for drought-stricken trees in Yarra Park is not an option according to the park managers, City of Melbourne.

The East Melbourne Group is disappointed that the number of cars permitted to squeeze into the Yarra Park on events days has not been reduced during the severe drought.

The contentious car parking agreement between the Melbourne Cricket Club, the State Government and the City of Melbourne has not been modified to maximize the survival of aging and thirsty trees in Yarra Park.

In response to recent complaints from the East Melbourne Group, Deputy Lord Mayor, Cr Singer has stated Council works closely with the parking contractor, S & K Parking to effectively manage parking while protecting park values including tree health.

When the East Melbourne News contacted S & K Parking in early February, management said they had not received any directives from the City of Melbourne to keep the cars

away from base radius of the trees.

Ian Fisher in charge of car parking contracts for City of Melbourne, said part of the contract specification clearly says cars must be 2.5 to 3 metres from the trees. When asked how the City of Melbourne handles non-compliance, Mr Fisher said we enforce by enforcing the message.

In a statement to East Melbourne News, Ian Harris Manager of Parks and Recreation at the City of Melbourne said, "Council is identifying the portions of avenues that are the most stressed. Temporary fencing will go up and substantial mulching is being spread around the root systems of the trees."

Councillor Brian Shanahan asked the Lord Mayor John So to call a Special Council Meeting to tackle a number of issues concerning large events and their impact on parks.

At the Special Council Meeting on 25 January, Parks and Recreation Manager Ian Harris said in his report at the Special Council Meeting that Council will take any action it can to minimize impact on the trees. Mr Harris also said that discussions with the Melbourne Cricket Club and the MCG Trust had begun.

Events manager Peter Stewart said the City of Melbourne would be putting in more sprinklers, drippers and mulch in time for the International Flower Show, held in the Carlton Gardens in March.

Councillor Peter Clarke, at the Special Meeting expressed his concern at the focus being put on some parks in preference to others. He believed Council ought not be selective with the usage of our parks and gardens and that it should have a more consistent policy.

Councillor Clarke expressed his dissatisfaction with the Parks and Recreation report. "There appears to be a lot of issues left unresolved when it comes to sustainable management of our parks, not only now but in the future."

The Carlton Gardens submission to the Special Council Meeting stated: "Council has stewardship of Melbourne's public parks and gardens which are in fact Crown Land. Their protection is prescribed in legislation yet Council fails to adequately recognize its responsibilities. An example is the granting of a license to stage the Annual Flower Show in the World Heritage listed Carlton Gardens."

In its submission to Councils new "Open Space Strategy – 2006", the East Melbourne Group stated: "The EMG believes a serious conflict of interest within Council Management has been created by removing the authority over usage of public parks and gardens from the Parks and Recreation Division and placing it in the hands of 'Events Management' of the Marketing Division."



At the time of printing, fencing had not commenced in Yarra Park.

The EMG's submission also referred to the earlier strategy "Growing Green Plan – 2003" that called for the gradual phasing out of car parking within a specific time frame.

The following year, under pressure from major sporting groups, the State Government backed down and agreed to no further reduction of the number of parked cars.

Council passed a motion expressing dismay that the capacity would not be cut from 5700 cars to 5100.

A total of 309,000 cars in Yarra Park in 2003, and an estimated 315,000 cars parked there in 2004. In 2006 a new 5-year Yarra Park Car Parking Agreement was struck between the State Government, the City of Melbourne and major sporting groups

with no cuts to car parking numbers.

The absence of cars in Yarra Park during the Commonwealth Games was testament to the philosophy that events can survive without a Car Parking Agreement. Public transport managed to get patrons to the MCG on time throughout the Games. So to maximize tree survival, isn't this the answer?

Mulching in Yarra Park pictured below.





Travelling South...

A trip of a life time



An East Melbourne couple, Sue and Percy Schlossberger have just returned from an adventure to Antarctica. Once upon a time the South Pole was out of reach for the ordinary traveller. Today, more and more companies are now operating tours to this spectacular continent.

Sue and Percy travelled with Peregrine Adventures who have operated tours to

this wilderness since 1998. Leaving from Argentina, the Russian ship Akademik Ioffe headed for Drakes Pond. After crossing the Antarctic Circle, passengers experienced the thrill of stepping out onto the ice once reaching land-fall.

After visiting the discarded British base Detaille Island, the ship moved along the Antarctic Peninsula to the Ukrainian base Darnadsey where the ozone hole was discovered in 1998.

Each day the 106 passengers were given the opportunity of boarding one of the ships zodiacs for an excursion to surrounding areas. An abundance of penguins and seals were there to see, while whales surfaced within arms length of those on board.

Contact Global Travellers for more information about this trip of a life time on 9417 3747

Bayside DRY CLEANERS

Professionals caring for your clothes

Specializing in

Wash, Dry & Fold Service
Ironing Service
Alterations & Repairs
Curtains, Drapes & Blinds
Carpet Cleaning Service
Silks, Suedes & Leathers
Continental Quilts & Doonas
Wedding Gowns
Furnishings
Shoe Repairs
Ski Wear

140 Wellington Parade

{Next to 7/11}

Phone: 9415-7059

Fax: 9415-7028

Email: baysidedrycleaners@bigpond.com



**CRUISEWORLD &
GLOBAL TRAVELLERS**
*All your travel
needs
Under one roof*

Leisure & business

- Domestic & International
- Air, rail and tour bookings
- Cruise specialists
- Experienced consultants
- American Express card payments & services
- Foreign currency
- Travel Insurance
- Visa processing and information

Whether it is Antarctica, Argentina, Bulgaria, Bucharest, Morocco, Malaga, Zimbabwe or Zanzibar, our expertise in the A to Z of travel is beyond compare. We can arrange your travel from beginning to end with a minimum of fuss and bother. We keep abreast of the latest specials and destinations and have the backing of the American Express Travel Services network. Call in and discuss your next adventure.

www.globaltravellers.com.au
sales@globaltravellers.com.au

37 Victoria Parade
Collingwood 3066

Tel: 9417 3747 Fax: 9419 6577

Members of IATA, AFTA & ICCA. Licence:32078

ALL CREATURES ON HODDLE

Veterinary Surgery

Dr Bill Ryan

1229 Hoddle Street
EAST MELBOURNE
OPENING MARCH 26th

For further information

Telephone 9415 8288

or email

petlover@ozemail.com.au

OPENING SOON

New President Appointed

The East Melbourne Group has appointed a new President.

Fiona Hinrichsen, former Committee Secretary and Treasurer of the East Melbourne Group has filled a vacancy created by the retirement of Margaret Wood.

Fiona and her husband Peter have lived in East Melbourne for nearly eight years and are now the parents of two young boys. During her university days, Fiona studied Arts and Commerce and just recently completed a Masters Degree in Financial Planning.

In addition to her family commitments, Fiona continues to pursue her career and works with a small independent financial planning company in the CBD.

What began as a mother's interest in the reconstruction of the Powlett Reserve playground, Fiona's further involvement in community affairs soon led to a place on the EMG Committee.



Fiona Hinrichsen

The Committee welcomed the appointment and congratulated Fiona on her decision to accept the nomination for this important position.

Planning News

Hayes Lane

Council has been asked to reconstruct the heritage surface of Hayes Lane. Nearby residents have complained about the poor reinstatement of bluestone by construction workers following the excavation and installation of service lines to a nearby construction site.

The East Melbourne Group is receiving progress reports from Council's Enforcement Officer Ron Stone.

George Powlett Motel

Developers have recently filed a fresh application to upgrade the 'George Powlett Motel' in East Melbourne. An earlier proposal in 2002 comprised the construction of a two-storey addition and an increase to the total number of rooms from 45 to 71.

It was found to be unacceptable by Council. The following year Council's refusal to grant a permit to a set of amended plans in 2003 led to an appeal at VCAT in 2004 where a permit was refused on the grounds of insufficient parking.

The latest proposal comprises the addition of one extra storey to the roofline. Although the East Melbourne Group welcomes the refurbishment of the motel, it objects to the proposed increase of height to the existing three and four-storey building; the failure to provide adequate parking spaces and the unsightly intrusion of the lift overrun and air-conditioning units.

Removal of Advertising Banner

In the previous issue of the 'News', it was reported that a large advertising banner had suddenly appeared in Jolimont Road.

Last month a Council Enforcement Officer notified the occupier and requested that the sign be removed within 28 days. The sign had been erected without a permit.

Jolimont Square Development

The East Melbourne Group believes the reinstatement of the 'heritage square' inside the newly built Jolimont Square has not been resolved.

The East Melbourne Group has written to the Director of Heritage Victoria requesting that the developer fully comply with the specifications of the Heritage Permit, which clearly stipulates the retention in full of the central garden.

The East Melbourne Group believes the bulk of the blue stones previously edging the carriageway were removed from the site.

The Ashes Urn

And the East Melbourne Connection

A special exhibition featuring the Ashes Urn at the Melbourne Museum and the Melbourne Cricket Club Museum in January told the story of how the Urn actually came about.

The Ashes Urn was presented to Ivo Bligh by a group of ladies following a social cricket match at 'Rupertswood' in the early 1880s,



the country home to Sir William and Lady Clark. Sir William and Lady Clark resided at Cliveden, an East Melbourne mansion now the site of the Hilton Hotel.

The Urn, believed to be a ceramics cosmetics jar, was filled with the ashes of one of the bails used at that social match. One of the ladies in the group was Ms Florence Murphy, who later became the wife of Ivo Bligh.

Formerly of Beechworth, Florence was employed as a companion and a music teacher.

The Ashes became a symbol of their courtship. Married on February 9 1884, Ivo and Florence lived in East Melbourne until 1888 when they moved to England. The Ashes Urn went with them.

In 1900 Ivo Bligh became the 8th Earl of Darnley. The Ashes Urn was pride and place in his study at the family Mansion, Cobham Hall.

Cobham Hall was made available to Australian soldiers to recuperate during the First World War.

Following Darnley's death in 1927, the Countess of Darnley gave the Urn to the Marylebone Cricket Club. It was first displayed to the public in 1929.

East Melbourne Treasures go on Show

One of the world's great libraries, the State Library of Victoria is the State's premier reference and research library, the hub of a statewide information and communications network, and a gateway to the world's information.

The State Library of Victoria Foundation is dedicated to building relationships with members of the community who recognize the importance of the State Library and want to contribute to its work.

Over 200 members of the East Melbourne Group attended a reception in Queen's Hall before viewing a collection of East Melbourne treasures from the State Library archives.

Shane Carmody, Director of Collections, Dianne Reilly, La Trobe Librarian together with colleagues were on hand to show guests items that included oil paintings, architectural drawings and sketches depicting the earliest beginnings of historic East Melbourne.

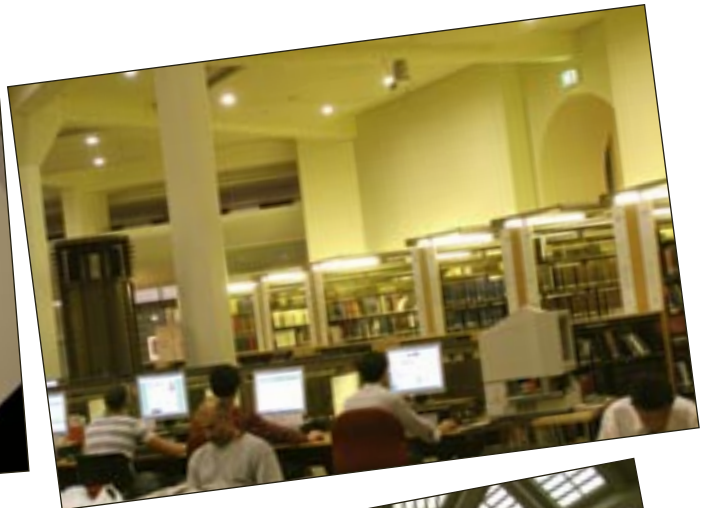
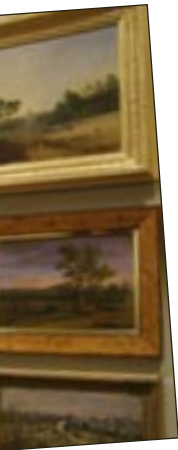
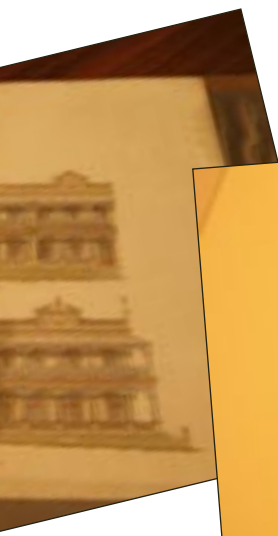
Since its establishment in 1994, the Foundation has raised funds through memberships, donations, sponsorships and bequests.

This has enabled the Library to purchase items of historical significance, conserve and develop its magnificent collections, deliver information services, mount exhibitions, run educational and cultural events, and publish State Library News and the La Trobe Journal.

Everyone is welcome to join the Foundation. Membership is an enjoyable way to engage in the cultural life of the Library. For \$65 Members can participate in many activities and special events as well as receive a number of other benefits including the State Library News and the La Trobe Journal.

If you would like further information about the Foundation visit the website: www.slv.vic.gov.au or contact Morton Browne Director, State Library of Victoria Foundation 8664 7517 or mbrowne@slv.vic.gov.au







St John the Evangelist Primary School

Schools in at St John's

St John the Evangelist Primary School in East Melbourne has started the school year with an influx of new students. The school's popularity has sky rocketed over the past three years with a 30% increase of student numbers. The local school in Albert Street has almost 150 students enrolled.

"The amazing thing about our school is that it represents every continent in the

world (bar Antarctica). Children come to us from USA, Norway, North and South America, Asia, Africa, Europe...it really is an international school", said School Principal Philip Cachia.

The school's Information Technology Centre was completed in 2006 with state of the art computers, projectors, cameras and microscopes.

Philip Cachia said "we are fortunate to

have an Information Technology Specialist teacher who takes all levels from Prep – 6".

Other curriculum offerings are a French, Library, Creative Arts and a Physical Education teacher who is sponsored by the City of Melbourne.

St John the Evangelist School provides Before School (7.30am) and After School Care (6.00 pm) for parents who work in the local area and in the CBD.

New Aged Care Facility for East Melbourne

Adjacent to the old Mercy Hospital development site, a new Aged Care facility will be built in Gipps Street by Salta Properties.

The state of the art project will replace the St Mary's Convent and the Chapel. This new 110 bed facility will be owned by the Sister of Mercy Melbourne Congregation and operated by Mercy Health and Aged Care.

For the community, the benefits of the project include better looking buildings in Gipps Street, a reduction of traffic, good car –parking facilities in the basement and high nursing care with a dedicated dementia unit.

The Mercy Aged Care facility will have a values based health organization that sees Aged Care as the priority area for the future. There has been no Aged Care built in the inner city for 25 years and given our aging population it comes as no surprise that there are people already on the waiting list.

John Ballard (CEO of Mercy Health & Aged Care) and David Ettershank, the General Manager of Aged Care, will be present at the Festa on 25 March in the McAuley Foundation/Mercy Health & Aged Care marquee. There will also be an information night at the local library in April.

The McAuley Foundation was launched in 2006 to support Mercy Health and Aged Care - a community benefit organisation founded by the Sisters of Mercy.

The McAuley Foundation raises funds for health research, teaching and training. The foundation is named after Catherine McAuley, who established the Sisters of Mercy in 1827. The Sisters have been caring for people in Victoria since 1857.

Each year, over 300,000 Victorians receive care from Mercy Health and Aged Care.

Your donations support areas most in need.
www.mercy.com.au
www.mercysisters.org.au

PSYCHOLOGY & COUNSELLING

10 Simpson St, East Melbourne

Robert Luzzi, psychologist and resident of East Melbourne, has relocated his private practise to 10 Simpson Street.

Robert is joined by his father, psychologist Frank Luzzi, and psychologists Kate Kendall and Michelle Lim.

Services include assessment and counselling of adults, children, families and couples, and workplace consultation.



Medicare rebates are available for some services.

Further information is available by calling **0433 321 123** or email **fluzzi@bigpond.net.au**

End of Year Get Together

East Melbourne Group members enjoyed their end of year get-together at the 'Pavilion' in the Fitzroy Gardens. Vice-presidents Judy Batrouney and Frank Coppens welcomed special guests, members and friends of the 'Group'.

Dingle Partners, major sponsor of the East Melbourne Group, treated attendees

to a Christmas show-bag of shortbread, a beautifully decorated gingerbread house and other surprise goodies.

In addition to the festivities of this annual Christmas function, a special announcement was made congratulating EMG members Patricia and Ronald Cape on the occasion of their 60th wedding anniversary. (pictured below)



*"Let's do lunch ...
at Morgans at 401 or Moylans."*

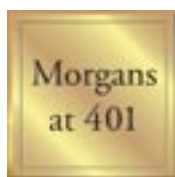


Enjoy consistently fabulous food in a friendly, charming atmosphere and discover why Melbournians who know are singing the praises of Moylans and Morgans at 401.

Call to arrange an inspection of our extensive function rooms.



384 Flinders Lane
(Bet. Queen & Market Streets)



401 Collins Street
(Bet. Queen & Market Streets)

For bookings and enquiries call 9223 2413
or 0423 022 014 (after hours)



News in brief

New Archbishop moves into East Melbourne

The newly appointed Anglican Archbishop of Melbourne, Philip Freier and his wife Joy have selected part of 'Bishopscourt' in Clarendon Street East Melbourne as their Melbourne home.

Before moving south to take up the appointment, His Grace was the Bishop of the Northern Territory. Previous ministries were in Queensland. He also lived and worked for a number of years with the Torres Strait Islanders, with whom he had a particular interest.

In 1983 the family moved to Kowanyama, an aboriginal community within the Diocese of Carpentaria. It was during this time that the Archbishop decided to research the history of the Mitchell River Mission, (former name of the community).

Eye & Ear Hospital looks at redevelopment.

Administrators at the Eye and Ear Hospital are proposing a substantial redevelopment and refurbishment of the hospital in East Melbourne.

The current building on the corner of Gisborne Street & Victoria Parade was constructed in the late 70s and is very much in need of an upgrade in hospital design.

Owl on the prowl in Fitzroy Gardens

City of Melbourne rangers are still reporting sightings of an owl they have identified as a *Ninox strenua* or Powerful Owl.

Its predatory habits include the lifting and killing of possums, the remains of which have been visible in its talons.

It usually habitats in dense shrubbery behind the dolphin fountain in the Fitzroy Gardens.

It is the largest, strongest owl in Australia with a wingspan of up to 60cms and weighs about 1.45 kg. It is the only owl in Australia that makes the 'whoo-oo' call.

Council allows a bigger list of recyclables

Now you are allowed to add rigid plastic containers to your 'recyclables' bin. Yoghurt, ice-cream and take-away containers can now go in. And that's not all.

Throw in your plant pots, shampoo and detergent bottles.

City of Melbourne has recently advanced its plastics recycling plant.

New Years Eve in East Melbourne

East Melbourne will be staging its own community New Years Eve party this year in George Street. John Lidgerwood, musical performer and director, and owner of the small boutique hotel 'Georgian Court', has formed a working party to help organize this community event.

'The balcony at Georgian Court would be the perfect location for a 'Big Band performance', said John. Council is receptive to the idea and will have further meetings with organizers to finalize arrangements.

The East Melbourne News will assist with the promotion of the event. Anyone interested in joining the organizing committee can call John Lidgerwood on 9419 6353.



View of the 2006 New Years Eve fireworks from the William Barak pedestrian bridge.

Police on the beat

Residents warned after a series of break-ins

A spate of home invasions and attempted break-ins were reported to police during the month of January and February. The East Melbourne Group sent an urgent message to all members following a series of burglaries in Powlett, Grey and Simpson Streets.

Residents were advised to check their home security and to report to police any unusual activity in their neighbourhood. The police have urged the public to take note of persons acting suspiciously and to forward information to police by ringing '000' immediately. The Melbourne East Police will then dispatch a patrol car to the area.

Bag snatcher meets his match

In another incident, a bag snatcher met his match when residents gave chase after hearing calls for help from a person using the phone booth on the corner of Simpson Street and Wellington Parade. The planned robbery came unstuck when the culprit was caught red-handed by some alert residents. The offender was followed into George Street and apprehended until police arrived on the scene.

Dial 000 to report any suspicious behavior or criminal act – and a patrol car will investigate your concern.





Crime Watch

Neighbourhood Watch Report for the area of East Melbourne – Provided by Sergeant Warren Jackman of the Victoria Police for the period of December 2006 – January 2007. Due to privacy considerations NOT all offences for this area are listed.

Date	Details	Location
01/12	Theft from motor vehicle, business office	Albert St
02/12	Theft from motor vehicle, car-park	George St
03/12	Theft from carpark	George St
05/12	Robbery, convenience store	Wellington Pde
06/12	Theft from motor vehicle, smashed window	Vale St
07/12	Theft from motor vehicle, smashed window, carpark	Victoria Pde
07/12	Theft from motor vehicle, garage	Albert Street
07/12	Theft from motor vehicle, forced lock	Grey St
08/12	Hotel/Motel burglary	Wellington Pde
10/12	Theft from apartment, invited in	Hotham St
12/12	Supermarket theft (shop stealing)	Victoria Pde
13/12	Theft from house	Grey St
14/12	Multi damage, carpark	Albert St
15/12	Theft of motor vehicle	Vale St
15/12	Theft of motor vehicle	Brunton Ave
17/12	Licensed premises theft (shop stealing)	Wellington Pde
17/12	Boarding house burglary, no sign force entry	Albert St
17/12	Apartment burglary, back entry	Grey St
20/12	Sports area theft	Brunton Ave
22/12	Burglary from premises, key used	Albert St
22/12	Theft, other	Jolimont Tce
23/12	Theft from motor vehicle	Agnes St
24/12	Carpark theft from vehicle	Brunton Ave
24/12	Theft from vehicle	Eades St
26/12	Theft of bicycle	Agnes St
26/12	Theft from motor vehicle	Vale St
26/12	Business office burglary	Jolimont Rd
28/12	Theft, recreation area	Brunton Ave
28/12	Property damage	Jolimont Tce
29/12	Guest house burglary, key used	George St
30/12	Theft from motor vehicle	Wellington Pde
31/12	Theft from motor vehicle	Eades St
01/01	Theft from motor vehicle, smashed window	Gipps Street
01/01	Property damage	Agnes St
04/01	Multi theft from motor vehicle	Wellington Pde
05/01	Theft from motor vehicle	Eades St
08/01	Multi theft from motor vehicle, carpark	Wellington Pde
09/01	House burglary, forced window	Victoria Pde
10/01	Theft from motor vehicle	Albert St
13/01	Carpark theft from motor vehicle	Lansdowne St
13/01	Carpark theft from vehicle	Wellington Pde
14/01	House burglary	Grey St
14/01	Theft from motor vehicle, smashed window	Victoria Pde
15/01	Theft of motor vehicle	Brunton Ave
15/01	Theft from motor vehicle	Brunton Ave
17/01	Burglary from house	Simpson St
17/01	Theft from motor vehicle in carpark, smashed window	Brunton Ave
18/01	Theft from motor vehicle, carpark	Eades St
18/01	Theft from motor vehicle in carpark	Albert St
19/01	Theft of motor vehicle	Albert St
19/01	Theft from motor vehicle	Simpson St
22/01	Theft of motor vehicle	Brunton Ave
23/01	Burglary from hotel/motel, forced door	Jolimont Rd
24/01	Burglary from house, unlocked from window, nil force	Grey St
24/01	Burglary from house attempt,	Grey St
25/01	Burglary from hotel/motel, nil forced entry	Albert St
25/01	Hospital burglary	Grey St
26/01	Burglary from house	Victoria Pde
27/01	Hospital theft	Clarendon St
27/01	Theft from motor vehicle, carpark	Brunton Ave
27/01	Burglary from apartment	Albert St
28/01	Theft from motor vehicle	Gipps St
30/01	Theft from motor vehicle, smashed window	Hotham St
30/01	Business office burglary, door	Albert St

What's On...

East Melbourne 'Festa'

Sunday 25 March 2007
11am-3pm - a community event
Powlett Reserve – East Melbourne
Albert and Powlett Streets

"Songs of Peter Dawson"

Soloist – John Lidgerwood
In aid of "Cottage by the Sea"
18 April 2007
Ph: Prue Forster 9417 7369

"Oklahoma" in Concert

Style Music Theatre
Various city and country Arts Centres
Ph: John Lidgerwood 9419 6353

"New Works 2007" - Jim Pavlidis

Chrysalis Gallery & Studio
179 Gipps Street – East Melbourne
9 March – 5 April 2007
www.chrysalis.com.au

Run for Kids 2007

Royal Childrens Hospital Fundraiser
Course includes Bolte Bridge and Domain
Tunnel 1 April 2007
Ph: 9292 1928 to register.

"Passionate Visions"

Works of Prokofiev & Mahler
Melbourne Symphony Orchestra
25 May 2007. Hamer Hall, Arts Centre, St Kilda Road.

International Jazz Festival

Jazz, Latin, Blues and Gospel
3-13 May 2007. Various venues
www.melbournejazz.com.

"Miss Saigon" – The Musical

17 March – 15 July 2007
Her Majesty's Theatre
Exhibition Street - Melbourne

Royal Botanic Gardens Market

Music, crafts and culinary delights.
14 April 2007. 9am-2pm.

Elgar's "The Dream of Gerontius"

Melbourne Symphony Orchestra
The Melbourne Choral
19, 20 and 21 April 2007
Hamer Hall, Arts Centre, St Kilda Road.

"After Miss Julie" by Patrick Marber

Red Stitch Actors Theatre
18 April – 19 May 2007
Rear, 2 Chapel Street, St Kilda,
(opp. The Astor) Ph: 9533 8082.

FINA World Aquatic Championships

17 March – 1 April 2007
Swimming, diving water polo and
Synchronised swimming
Road Laver & the Aquatic Centre.

FINA Festival

Live music & street theatre
Childrens activities & visual arts.
17 March – 1 April 2007
Riverbank Precinct
Federation Square to Birrarung Marr.

FOCUS COMMUNITY

An opportunity for South Yarra, East Melbourne and Southbank members of the community to meet councillors and management.

Wednesday, 18 April 2007
6.00pm - 7.30pm

South Yarra Senior Citizens Centre,
Fawkner Park
Toorak Road West, South Yarra

Bridge for Beginners In East Melbourne

Anyone interested in learning bridge is invited to attend a proposed course of 10 introductory lessons in early 2007

No partners necessary

For further information
contact:
Warren 9417 7092

EAST MELBOURNE HISTORICAL SOCIETY

Coming Events

WHELAN THE WRECKER'S EAST MELBOURNE

Robyn Annear, author of
A City Lost & Found will take us
behind the scenes as Whelan the
Wrecker changes the face of East
Melbourne forever.

8.00 pm Wednesday, 18 April 2007
at Clarendon Terrace,
210 Clarendon Street,
East Melbourne

Members free; guests \$5.00

ALL WELCOME

Enquiries: Sylvia - 9417 2037



Dr Anna Mamone
B.Sc.(Biochem) B.Sc.(Clin.Sc.) M.H.Sc.(Osteo)

Specialising in:

- Sports Medicine-knee, shoulder, hip, ankle pain
- Back and neck pain
- Arthritic conditions
- Muscular and Ligamentous Strains
- Headaches and Migraines

Cliveden Hill Private Hospital

29 Simpson Street, East Melbourne Vic 3002
Ph: (03)94 19 7122 Mob: 0409 665 220 Fax: (03) 9419 0347
Email: anna@emosteo.com Web www.emosteo.com

Library & Community Centre

122 George Street
East Melbourne

FOR ALL MEETING ROOM
BOOKINGS

Phone: 9210 1510

Email:

eastmelbournelibrary@yarranet.au

DO YOU NEED A NANNY/BABYSITTER?

Please Telephone Barbara
PH: 0400 210 328

EXPERIENCE

Over 20 years in childcare
and home environment.

Certificate 2 Childcare Studies



Current First Aid
Certificate

Current Police Check

Volunteering for St Vincent's & Mercy Private Hospital

Would you like to volunteer for a
not-for-profit private hospital
committed to providing the highest
standard of private health care in
East Melbourne? Your contribution
will assist and support your local
community as well as helping a local
icon hospital.

If you are interested in sharing your
time and offering invaluable
assistance, please contact
Tanya Smolski on 9928 6888

MELBOURNE SOCIETY OF WOMEN PAINTERS & SCULPTORS



98th ANNUAL EXHIBITION
GLEN EIRA CITY COUNCIL GALLERY
CNR GLEN EIRA & HAWTHORN RDS
CAULFIELD

2ND - 13TH MAY, 2007

MAJOR EXHIBITION BY
ESTABLISHED ARTISTS

GALLERY HOURS

Monday to Friday 10.00am - 5.00pm
Saturday & Sunday 1.00pm - 5.00pm

<http://homevicnet.au/~mswps>
mswps@yahoo.com.au

Owners Corporation Act

INFORMATION NIGHT

For all Body Corporate members

Tuesday 15 May, 12-2pm

MELBOURNE TOWN HALL

Presented by the Victorian Law Foundation
Speaker: Julie Van Dort of Coody's Solicitors



Glen Eira City Choir
Presents

Gabriel Faure
REQUIEM
Franz Schubert
Mass in C Major opus 48

Conductor: Jane Elton Brown

AUBURN UNITY CHURCH
81 Oxley Road
Hawthorn

Sunday 6th May, 2007
2.00pm

Contact: 9598 6501
TICKETS: \$25/20
Conc/Groups \$20
Afternoon Tea



Board

Bridge

AT THE EAST MELBOURNE
LIBRARY

1st and 3rd Thursday every month
7.15pm to 10pm
Refresher lessons and supervised
play every 4th Thursday

ALL WELCOME

Ring Lynn on 9419 6039
or
Helen on 9419 6838

PARIS APARTMENT

Quiet 2 bm, well appointed
First floor apartment
for min. weekly rentals.

Located just 20 m walk from
Notre Dame, 10 m from
Marais and Paris Opera
and 5 m to 3 metro lines
RER and TGV.

East Melbourne owner
9419 2712
0412 196 019

DONATIONS WANTED

For the East Melbourne Group's

*'Collectables & Curios Corner'
Festa Stall*

If you can fill a box with books,
china, crockery, lace, linen,
silverware, kitchen ware, toys,
glassware, vinyl records, or
caneware, in acceptable condition,
please contact:

9415 1174

To arrange the collection of your
donation

Flower Arranging at Holy Trinity Church

*Trinity welcomes more ladies and gentleman
to take part in the enjoyable activity of flower
arranging. Rostered volunteers exercise their
artistic talents at Trinity each year.*

*Flowers play an important role in the feeling
of comfort and welcome. Trinity has its door
open to welcome people in need of help,
tourists, family members who visit their loved
ones at nearby hospitals and those who need a
quiet time for reflection. Many of these visitors
are from overseas and interstate.*

Contact Liz Chaplin: 9663 8860
for further information

First Saturday of the month

"Friends of the Library"

Meet for morning coffee
10am - 12 midday
at the Library upstairs

122 George Street
East Melbourne

ALL WELCOME

Fundraising Fun Golf Day
Friday 16th 2007
Box Hill Golf Club

The Bionic Ear Institute

Help raise much needed funds
towards research into improving
the bionic ear

Raffle prizes and trophies up for grabs!
Visit www.bionicear.org for more details
and a registration form
or phone 9667 7500

Secure your last minute place now!

VOLUNTEERS NEEDED

Volunteers are needed for several
agencies in Fitzroy which support
homeless people. Some are residential
and others are day centres.

Volunteers provide social
companionship, serve meals, share a
cuppa, help run activity groups and
drive men and women to medical
appointments.

Please ring Gill at

Shekinah Homeless Services
on 9287 5568

to find out about our
information sessions

OVER 45's SOCIAL CLUB

Join us at the movies or the
theatre, for lunch or dinner



For more information
or a newsletter, telephone
Aileen on 9415 1906.

www.life.org.au

Inner Melbourne Life Activities Club
- a not for profit group.

JOIN THE GROUP NOW

We urge you to join the
East Melbourne Group Inc.

Please fill in your details below and send to:

The Secretary
The East Melbourne Group Inc.
152 Powlett Street,
East Melbourne VIC 3002

Name:.....

Address:.....

Phone:

I would like an Information Kit sent to
me detailing the EMG Membership 2007
or email to admin@emg.org.au

DINGLE PARTNERS

SUCCESSFULLY SELLING EAST MELBOURNE AND SELLING BETTER!

506 Victoria Parade 158 Albert Street 102-104 Jolimont Road
105 Hotham Street 55 Berry Street 152 Simpson Street 82 Albert Street
246 Albert Street 154 Simpson Street
22 Agnes Street 37 George Street 102 Albert Street
1-11 Grey Street 1161 Hoddle Street
158 Albert Street 1 Powlett Street
1 Powlett Street 23 Albert Street
166 Wellington Parade 53 Powlett Street
190 Albert Street 66 Gipps Street 246 Albert Street
400 Victoria Parade 189 Powlett Street 29 Albert Street 30 St Andrews Place
115 Hotham Street 32 George Street 162 Albert Street
182 Victoria Parade 32 George Street

***WITH STRONG DEMAND FROM OUR BUYERS,
IT'S A GREAT TIME TO CONSIDER SELLING!***

If you are interested in seeking an up to date market appraisal of your property or in selling now, please contact Amanda our Customer Service Manager for immediate action.

128 WELLINGTON PARADE,
EAST MELBOURNE
OPEN 7 DAYS

9614 6688
www.dinglepartners.com.au