

# EAST MELBOURNE 3002 community magazine JOLIMONT



*Picnic on the green*  
*Art uncovered*  
*Cooking up a storm*

Produced and distributed by



east melbourne group

SPRING/  
SUMMER 2016

## EAST MELBOURNE JOLIMONT

community magazine

### PRODUCED BY

The East Melbourne Group Inc  
ABN 16 624 318 008  
Provider A0041878P  
P: 9415 7570  
admin@emg.org.au



[www.emg.org.au](http://www.emg.org.au)

The East Melbourne Group first produced a local news magazine in 1980 with past editions held by the State Library.



east melbourne group

### EDITOR

Susan MacKenzie  
{admin@emg.org.au}  
with assistance from  
Charlie Hohnen

### DESIGN

Kristina Strzebonski  
Mediation Communications  
{contact@mediacomms.com.au}

### ADVERTISING ENQUIRIES

Gus McAllister  
0400 867 739  
{magazine@emg.org.au}

### COVER IMAGE

Rebecca and Melinda with  
Violet, Lily Rose and Chester

### PHOTOGRAPHY

Susan MacKenzie



[www.facebook.com/  
EastMelbourneGroup](https://www.facebook.com/EastMelbourneGroup)



Very messy  
Yarra Park



# Our social events

BY MURRAY HOHNEN

**President East Melbourne Group**

*During the year Siusan Mackenzie and her team have done a great job organising an array of social events to appeal to the diverse sections of our community including the Quizmas Trivia reported on page 8.*

There is also news of our return to the Bishops court garden in February on page 4 and suggestions for how you can get involved to make that another wonderful community event.

### OUR PARKS AND GARDENS

Having been away for the last ten days, I can attest to the benefits the rains have brought right across the country and even into the Simpson Desert. There the wildflowers carpet the red dunes though the flies are just as prolific.

In our local parks and gardens the moisture has promoted strong spring growth and in general terms everything looks neat and well cared for. Work has started to enclose the veranda of the electricity substation in Fitzroy Gardens. The grill design is basic Penridge without the changes we suggested to reinforce the art deco curves of the handrails. It being a live substation we supported the proposal to create the barrier and exclude squatters.

The real disappointment for the year was the wholesale disruption and damage done to Yarra Park (pictured bottom left) during the football grand final series. A cross rail pedestrian bridge was blocked off and large tracts of our heritage park given over to commercial activities from which the public was excluded. The tragedy was compounded by attempts to dismantle the temporary constructions after heavy rain. The photos show the damage done.

I have said before in these pages that Yarra Park was set aside many years ago for the rest and recreation of the people of Victoria. Steadily over the years its size has been reduced

and large areas excised for sporting venues. At the instigation of EMG, the park was added to the State Heritage list. Later again it was taken from the joint management of the Government and the City of Melbourne and placed under the control of the Sports Minister and the MCG Trust.

Much of the MCG's management of the Park is well directed. The trees and gardens are maintained but seemingly as an extension of the sports business and not as part of the nurture of a heritage place. Statues replace grass. The transportable wickets and contractors' lay-down areas take up yet more of the park. During an increasing number of major events, parked cars cover the areas where families should be walking their dogs and kids playing cricket or kicking footballs. The car parking itself abrades the park as informal roadways develop. Unexpected rains soften the ground and vehicles plough up the surface.

EMG has always argued that a heritage park with so much connection to our early past should not be used as a car park. We feel it incumbent on the MCG, the City of Melbourne and the State Government to come up with a new plan. Perhaps they might think about constructing dedicated

parking and a sporting plaza over the railway lines between the MCG and the MOPT areas. Parking which would serve city commuters during the week and the sports precinct at other times. A plaza for sporting patrons and to accommodate the temporary arrangements that sporting tournaments spawn.

We also argue for watch and ride ticketing where each MCG and MOPT venue ticket carries automatic travel entitlements on trams and trains. Extending the free tram zone to Punt Road would be a valuable first step.

### OTHER INITIATIVES

I would like to record our appreciation of the collaborative work we do with the East Melbourne Historical Society. Their careful research into local history provides an invaluable resource that is used in our planning processes. For some time now their President, Jill Fenwick, has been documenting a history of the EMG and its achievements. We aim to celebrate and publish her work next year.

### RENEWAL

With Christmas and the New Year rapidly approaching I would like to express my personal thanks to the talented volunteer members of our Group who have done so much during the year to protect, enhance and connect East Melbourne in line with our vision.

Early in the New Year we can look forward to our next general meeting and the election of a new committee to take the group forward. When I took on the job as President, I indicated my willingness to serve for three years and the end of this term is rapidly approaching. It will be someone else's privilege to lead the group forward next year. I know that there are other members of the committee who have been in their current roles for many years. Some of them will be setting aside their responsibilities as well.

So please spend the coming months considering what you might do to keep our group vital and effective. If you are already a member then think about taking the next step and joining our committee or one of the sub committees.

For those of our readers who are not EMG members, please join. Each addition to our numbers adds to the regard paid to our submissions by local, state and federal governments. For those of you who are members, please encourage friends and neighbours to join. I am sure they will enjoy the sense of connectedness as much as you do.

### CHRISTMAS AND NEW YEAR WISHES

On behalf of the whole of the East Melbourne Group committee and sub committees, I wish you all a very merry Christmas and a safe and happy New Year.



# JUST A FRONT

BY BARBARA PATERSON

*EMG is concerned about a growing trend towards facadism in our area which is evidenced by the number of permit applications to Council seeking exemption from planning laws relating to heritage fabric.*

Facadism is defined as 'the practice of preserving the fronts of old buildings while demolishing the backs, often constructing modern interiors behind the old facades.' The practice has been around in various forms for a long time and is subject to architectural fashions. However in recent years Melbourne Heritage Action has tracked its spread in the CBD. It often appears in areas under strong pressure from development. The practice of facadism is controversial and broadly divides people into two main camps - developers and heritage advocates.

**Pro-facadists** argue that the practice is a pragmatic response to circumstances. It preserves heritage in situations where the building is not worth saving. Often, only the facade is of interest when the rooms behind are either damaged or much altered over the years. Facadism is better than demolishing the building altogether and at least it still contributes to the streetscape. It can be the right amount of compromise; accommodating people's needs and retaining the building's character and the streetscape by preserving the front.

They argue that there is nothing intrinsically worthwhile, architecturally-speaking, in unity. Buildings should be seen as theatre and sculpture; they are living organisms - interiors are partitioned, uses change and their relationship to the exterior lessens over time - retention of the facade only is just one end of the continuum. The real issues, it is said, relate to architectural integrity and aesthetics.

Those on the **anti-facadist** side argue that facadism is only about streetscapes and downgrades buildings. As much of an historic building should be saved as possible in order to retain context and integrity. Facadism destroys the relationship between interior and exterior. It inherently lacks integrity and reduces the building to a 'folly' - something constructed primarily for decoration. Facadism is not the answer to preserving heritage; it is 'fake heritage', anti-cultural, and creates a pop-up version of history.

They contend that facadism is a cheap construction method and has little to do with heritage. They say that it is the whole building, including the interior, which evokes the building's character; often the interior is historically interesting in its own right. Also, the interior reveals how the building worked spatially. Buildings are three dimensional and facadism changes a building's proportions e.g. windows need to relate to room spaces.

Current local planning policies are a compromise between the two camps, stipulating the amount of heritage fabric to be retained according to the heritage status of the building. However these policies are currently under review and as far as demolition is concerned the degree to which the heritage fabric contributes to the three-dimensional form of the building will soon be relevant. The case is now being put, in anticipation of changes, that demolition is acceptable if it only involves fabric that is concealed from the site's



South Melbourne facade

primary street frontage. Surely this will lead to the gutting of terraces.

EMG is firmly on the side of the anti-facadism brigade and we endorse the sentiment behind the words of the Venice Chapter of the International Council on Monuments and Sites which states that a 'monument is inseparable from the history to which it bears witness and from the setting in which it occurs.'

Perhaps many home owners do not care about facadism - they only want a nice looking building which serves a purpose - but this does not do much for our heritage. Part of the antidote to such an approach has to be awareness of the importance of protecting the heritage of the area for the future and the significant issue of facadism.



Est. 1897

## Service with a smile at Pymans Pharmacy



84 Wellington Parade, East Melbourne 3002 • P: 9419 4464 • F: 9419 4187 • E: [pymanphy@bigpond.net.au](mailto:pymanphy@bigpond.net.au)

# Picnic on the green at BISHOPSCOURT

Save the date 25 February from 4.00pm

*For the past few years EMG has hosted a hugely popular community Christmas party at BishopsCourt. It has been decided to change the format this year in favour of a picnic on the green in February when everyone has settled back into routine after the festive season.*

So save the date for the not to be missed East Melbourne community picnic on the green at BishopsCourt which will retain all of your favourite aspects of the event and introduce some new ideas.

**Saturday 25 February 2017, From 4pm**

- Live music • Kids entertainment
- Great food • Stalls
- Bar • And much more

More information will be available in the new year.

Please contact Siusan on **0438 405 406** if you

- would like to host an East Melbourne Made market/craft stall
- can entertain us with your musical prowess
- have a great idea for kids entertainment
- would like to get involved as a volunteer



## East Melbourne Group

Working together to keep 3002 the way you like it

### Why become a member?

- 1** To help preserve all you love about East Melbourne and Jolimont
- 2** To support the work of EMG to connect the community
- 3** To add your voice and influence decision makers

Membership fees are very reasonable at just \$50 single, \$100 household and \$30 concession but every contribution helps EMG and its committee achieve its stated purposes.



If you would like to have a chat about EMG membership and how you might become involved, please provide us with your details and we will be in touch soon.

Name \_\_\_\_\_

Email \_\_\_\_\_

Phone \_\_\_\_\_

Address \_\_\_\_\_

\_\_\_\_\_

\_\_\_\_\_

Mail to: 152 Powlett Street, East Melbourne 3002



# Fitzroy Gardens

BY CHARLIE HOHNEN  
AND SIUSAN MACKENZIE

*The Gardens, as we know them, have a long history of over 150 years and few other capital cities can boast such a significant garden so close to the City's centre. Almost everyone who lives in East Melbourne would say they are a highlight of our neighbourhood.*

The City of Melbourne is the custodian preserving and overseeing this magnificent 27 hectare, crown land garden visited by over 2 million local, interstate and international visitors each year. For many of us, it is where we do our daily walk and there is so much to notice along the way.

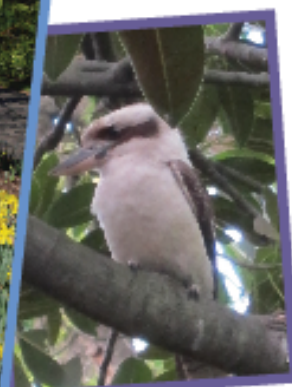
Two large trees have fallen in Fitzroy Gardens during the recent wet and windy weather, both in the same general area north of the conservatory and east of Lansdowne Street. One was part of the avenue of very tall elms that march across the gardens. Other trees have lost limbs. These incidents are almost inevitable with large old trees that are reaching the end of their lives. Not for nothing are elms known as 'the old grey widow-makers'. There has been talk for some time about replacing the older trees along the avenues with new, young and vigorous trees. Melburnians love their elms but there does come a point when aesthetics and public safety must override the wish to preserve the old trees for as long as possible.

Meanwhile as the 96,000 daffodil bulbs die down after their second magnificent display the borders, particularly along the Hotham Street walk have been replanted. Swathes of marigolds, purple petunias and white alyssum seedlings have been carefully laid out and they will all come into full flower in a few weeks' time to provide a magnificent border for people walking into town. Plantings are designed by the Horticulture Manager and plants are bought in to implement the designs. Gone are the days when the nursery on-site provided all the plants.

The Conservatory in the Gardens was opened in 1930 and has for over 80 years provided spectacular floral displays. There are five separate displays each year and currently it is the glorious blues and mauves of calceolaria and schizanthus, also called butterfly flowers or poor man's orchids.

And it is fun to watch the newborn ducklings waddle behind their protective parents as they learn all about life in the big city and how to take their first jump into the pond.

Visitors often stop me as walk through the gardens to ask, 'what is that bird?' They seem delighted that so close to the city we are blessed with such a variety of colourful and rowdy birds including rosellas, galahs, magpies and cockatoos. I absolutely love hearing the kookaburra laugh at passersby catching them by surprise. I have to stop and remind myself that I am really in the heart of the city!





# Creative East Melbourne

How many artists do you think reside in East Melbourne?

BY LISETTE MALATESTA

You may be surprised to learn that 57 of them exhibited at a recent Community Art Show. For the month of August, the East Melbourne Library hosted the inaugural 'Creative East Melbourne' exhibition.

The installation was a resounding success; welcoming over 200 revellers to the opening celebration and an immeasurable number of new visitors to the library. A local art fraternity has now been formed, with friendships and networks, art sales and commissions having been gained. A wonderful time was had by all who loved sharing and seeing the creative talent of their neighbourhood.

The quality and breadth of the 90 curated works was staggering; submissions included original jewellery, sculpture, photography, oils, water-colour, digital work, illustration, prints and lithographs, over a vast range of traditional and contemporary styles and subject matters.

The exhibition not only engaged the active vocational and hobby artists of East Melbourne, but paid homage to the heritage of notable former residents; sculptor Ola Cohn, photographer Helmut Newton and cartoonist Arthur Horner, and represented works from the East Melbourne based Victorian Artists Society and Melbourne Society of Women Painters and Sculptors.

The East Melbourne General Store initiated, facilitated and funded the event with the support of the East Melbourne Library, East Melbourne Historical Society and the East Melbourne Group.

Over the month visitors were encouraged to vote on the People's Choice Award and the overwhelming favourite was Janet Cocks for her bold and bright abstract canvas (pictured below), followed by

Emma Stephens for her highly detailed pen illustrations of iconic Melbourne buildings. Prizes included a gourmet hamper provided by the East Melbourne General Store and a dinner voucher to *Geppetto Trattoria* supplied by the East Melbourne Group.

We look forward to repeating the event in 2018 and call for volunteers to assist with the planning. Please visit Lisette at the East Melbourne General Store and [lisette@eastmelbournegeneralstore.com](mailto:lisette@eastmelbournegeneralstore.com) to voice your interest to exhibit or be involved.





# Art cover up

Mirka Mora is one of Melbourne's best known and loved artists. Since the early 1950s when she and her husband Georges immigrated to Australia from France, she has contributed to Melbourne's transformation from quiet, provincial town to sophisticated, multicultural city.

Her early training was in mime and drama, but painting was her focus by the time she reached Australia. Mirka and Georges helped bring European-style dining to 1950s Melbourne, opening the Mirka Café in Exhibition Street, the Balzac in East Melbourne and finally Tolarno in St Kilda.

Balzac was famous as the first Melbourne restaurant to have a full 10pm liquor license and it attracted many famous people including Ava Gardner and Gregory Peck when filming *On the Beach* here in 1959. Apparently, Graham Kennedy dined there each night before going off to film *In Melbourne Tonight*.

Mirka's numerous public artworks including mosaic murals at Flinders Street Station and St Kilda Pier and a painted tram, have helped enliven the city, and her bohemian style and joie de vivre have endeared her to Melburnians from all walks of life.

The Balzac is now the very popular Tippler and Co, a bar and restaurant run for the last three years by Gus McAllister and his wife Nic. Imagine their surprise when doing a spot of renovating earlier in the year when they uncovered one of Mirka's 1960s charcoal murals hidden behind a sheet of plaster.



Marisa, Andy, Uzzie, Gay and Graham Sussex enjoying a drink in front of Mirka's art work

Now a little slice of history, long thought gone, has been rediscovered and it is attracting visitors from far and wide.

Local Gay Sussex and her friends gathered recently for a drink and a viewing of the mural. According to Gay, 'this mural is another part of East Melbourne history that makes our suburb such an important part of Melbourne culture. To stand in front of a recently re-discovered gem was a thrill.'

Mirka, now in her late 80s, had forgotten about the mural but is delighted that it has been discovered and will have a new life and be enjoyed by a new generation of visitors to the upstairs bar at Tippler.

Gus and Nic said they were looking for something to honour the amazing history of their unique building. 'To find a mural by Mirka herself was a fantastic surprise. It not only transforms the upstairs space but lifts the venue into some great company - it's like East Melbourne's own Chloe!'

## All Creatures on Hoddle

Veterinary Hospital

"We offer a full range of Veterinary Services with free pick up and delivery, and extended hours to allow for evening consultations"



1229 Hoddle St, East Melbourne (opposite Hungry Jack's)  
OPEN: Monday - Friday 8.30am - 11am, 3pm - 6.30pm  
Saturdays 9am - 11am or by appointment

**9415 8288**

[info@allcreaturesonhoddle.com.au](mailto:info@allcreaturesonhoddle.com.au)

## OLYMPIC PARK SPORTS MEDICINE CENTRE



### Services

Sport & Exercise Medicine • Physiotherapy  
Pediatry • Psychology • Remedial Massage &  
Myotherapy • Exercise Physiology • Rehab  
Gym Facilities • Cycling Services

OPSMC provides world class sports medicine care for everyone, from the elite athlete to all members of the community, enabling you to remain active throughout your life, for life.



**APPOINTMENTS:**  
1300 859 887

VISIT OUR NEW WEBSITE!  
[www.opsmo.com.au](http://www.opsmo.com.au)

Ground Floor, St Francis Building  
166 Gipps Street, EAST MELBOURNE



# East Melbourne Community QUIZMAS

BY IAN HIND &  
KATH RUTHERFORD

*Webb Lane residents and EMG members, Ian Hind and Kath Rutherford, and their family and close friends assembled a table for the East Melbourne Group Community Quizmas held at St Peter's Church Hall in August.*

The team, comprising Ian and Kath and family members Andrew, Kate, Doug and Jasmin, and friends Ian, Lisa, Brandon and Nicole was a mix of Gen X, Gen Y, Millennials and a clutch of baby boomers. With this demographic mix our team covered four decades from age 25 years to 66 years. We named our group 'Plato's Plonkers' after the title of the mailing list of Phaedrus Estate wines, one of our favourite wineries on the Mornington Peninsula. (Phaedrus appears in the dialogues with Socrates written by Plato in the fourth century BC.) This was our first trivia quiz as a group. However, although inexperienced against other old hands, we approached the night with some confidence that our spread of knowledge and expertise would make us competitive.

On arrival at St Peter's we found that the venue and organisation of the venue ticked all the right boxes for the occasion – the beautiful and historic church hall, a full house and plenty of camaraderie within the tables. The winners for the best decorated winter Christmas table and most fabulous jumper were very worthy winners. Most tables were very well stocked with food and beverages but some excellent extras were also available for purchase on the night. It was very clear from the start that this was going to be an enjoyable evening for all in attendance.

The two MCs – Gus and Nic from Tippler and Co – put on a most professional, entertaining and engaging performance. The questions were cleverly constructed by Fred, some quite intriguing, some particularly challenging. In fact a few were really tough. The questions embraced a wide field – music, cars, city of Melbourne knowledge, movies, spelling, celebrity recognition, Christmas themes, sport, geography, restaurants, 'Who am I?' and general knowledge. A 'Spics and Specks' style segment, presented by the very talented Simone French, added another entertaining dimension to the night. The range of questions was such that everyone on our table (and almost certainly all the other tables) was able to make a valuable input.

The competitive spirit amongst the teams was most evident at the end of the night as the organisers counted the results from each table. The Plato's Plonkers team was very honoured and gratified to be awarded the winning prize of a dozen premium wines donated by East Melbourne Cellars and EMG.

This was an excellent night – the East Melbourne community at its best. We are sure all in attendance are looking forward to next year's event.







*Nina and her beloved companion Misba*

## 'she's an icon of East Melbourne!

a local resident says of stylish Nina Gregurek. This is true for several reasons. For one, the restaurant Nina checks in on six days a week is a Melbourne institution. Vlado's restaurant takes its name from Nina's restaurateur husband, the late, great Vlado Gregurek. Another reason for Nina's stature among neighbours and locals could be her colourful life. In August 1958, Vlado and Nina were migrants from France, having previously moved there from the former Yugoslavia, looking to make a new home. Nina preferred America. Vlado preferred Australia. 'I wasn't sure because in those days Australia was end of the world', Nina says. Hearing her concerns, Vlado assured Nina the two of them would return to France if Australia was not to her liking. In the meantime, however, they would travel to Melbourne, Australia, and see it first-hand. Vlado and Nina met with an old friend in Melbourne who showed them around. Nina remembers that first trip well. 'I remember vividly now, Elizabeth Street and the verandahs', Nina says. 'I said I like it, because it looks like cowboy city.'

After Elizabeth Street, the friend took Nina and Vlado to Melbourne's suburbs. 'He took us to Toorak and I said, 'I'm not aiming for that, but if there was anywhere I wanted to have a house it is Fitz – Fitz-something. I couldn't remember Fitzroy Gardens.' Nina says it took a few years for her and Vlado to fulfil that hope of living right near Fitzroy Gardens in East Melbourne. But Nina believes she experienced East Melbourne at the perfect time. In the late 50s and 60s she says residents never locked their doors or windows. Neither did the thought ever cross their minds that anyone would take the money left out for the milkman. Now, Nina says, the world is a very different place but she adds, 'I passed through all five continents and I'm telling you, there is nothing like East Melbourne and there is nothing like Australia.'

Nina sought to learn the language of her new home but to also further her artistic education, first as a mannequin and photographic model

# A woman of many talents

BY ROB MCCOLL



*A more recent painting by Nina*

then as an actress on stage and television. She appeared on many locally produced favourites such as Division 4, Homicide, Matlock Police and Hunter.

Nina is also a talented painter whose work has been shown at galleries throughout Australia. To her, painting is an expression of emotions as they are, not as they should be. One piece in particular hangs at Owen Dixon Chambers. It depicts the adversaries she faced in court to stop the demolition of East Melbourne crown jewel, Crathre House. In that time that painting became an emotional release. Nina says it was indeed a time of great frustration. 'I didn't want Crathre to be destroyed – that was most important,' Nina says, 'Second, I was thinking if they dig underneath to build car parks my house is going to suffer.' The property developers Nina depicted in the painting wanted to replace 142-year-old Crathre House with six townhouses. The council representative was sympathetic to the developers and the owner was going to profit from the sale. To challenge the demolition proposed, Nina paid for her own junior barrister and a silk. Her time and effort were not wasted and the six townhouses were shelved. 'I was really angry that somebody wanted to destroy something so beautiful.' That anger is evident in Nina's depiction of the court, but she says the work was not painted out of malice. It has more humour to it than anger. Nina painted the developers as dogs, the owner as an octopus, and the council representative as a walrus. It fits the description Nina gives of her wider painting style; naïve, whimsical, with a quirky sense of humour.

Nina says she no longer has time to paint very much. There is never enough time,



*Nina the glamorous model and actress*

she says, with Vlado's business to run. It is important to her, that Vlado's remains a family business. Her son goes there at night-time to check in. Her eldest granddaughter helps serve the tables. The manager is another relative. It is even more important to Nina that Vlado's should retain the premier quality it has always had. Among many others, high-profile clients of Vlado's, including politicians Jeff Kennett, Peter Costello and Paul Keating, insist it should remain true to Vlado's vision. A picture of past prime minister Paul Keating at Vlado's hangs in Nina's living room. Indeed, the extensive list of high-profile names that frequent Vlado's restaurant and the restaurant's high level of recognition are testament to the extraordinary growth of the business. 'He started it from nothing,' Nina says of Vlado. 'And whatever it has achieved, he achieved it. Vlado achieved his dream to have a steakhouse in Australia, a new frontier, with the best cattle and the best beef.' When asked why she continues to check in at Vlado's almost every day, more or less running the business herself, Nina's reply is honest and heartfelt. 'I am not doing it because I want to do it,' Nina says. 'I am doing it because I want his spirit to go on.'

When we stopped by to take her photo Nina told us that she doesn't smoke, doesn't drink but that she's been drunk on life. She wants to spend the rest of her life being happy through Vlado's and through her art.



# 35 years cooking up a storm

*Nino Cea was inspired to cook by his grandmother and mother who shared their love of delicious and traditional home style Italian food and an abundant shared table.*

BY SIUSAN MACKENZIE



At age 20 Nino began an apprenticeship as a chef at an Italian restaurant in Rathdowne Street. Behind the scenes his grandmother and mother continued to influence his cooking and to this day he points to their special touches. His fresh artichoke pasta with just a touch of mint 'as mamma would say', and fresh tomato is an example of their inspiration.

As a young chef at Campari Bistro he regularly came to East Melbourne to visit a friend and fell in love with the local people and the neighbourhood.

In 1981 a family friend bought the building that is home to *Geppetto Trattoria* in Wellington Parade for \$131 000. Since then the Ceas have been tenants and over the years have created an East Melbourne institution now 36 years old.

Master pasta maker and grandmother Angela, Nino and his son Adriano, who did his apprenticeship at *Geppetto*, have all been in charge of the kitchen. There has certainly been a lot of pasta cooked and enjoyed over the years.

Their goal has been to maintain the tradition of home style simple Italian cuisine produced with the best quality local and imported products.

It has been satisfying that from the very beginning local residents embraced their concept of simple fresh food and very personable service in a trattoria style restaurant.

According to Nino it is the local people who feed his passion to express what he does best with cooking.

'Their appreciation keeps me going and I am very grateful for that.'

Local Bill Perry always slips over to *Geppetto* for take-away when it is his turn to 'cook' for the family.

'They are real gentlemen and their food is first class, like home away from home in Italy,' he said.

For the past 33 years a group of retirees who call themselves the GOMS (grumpy old men) come together almost every Friday to enjoy a meal cooked by Nino. There are several groups like this who meet regularly at *Geppetto*.

'We love them to death. They are just like family to us,' said Nino.

It caused a bit of excitement last year when one of the Beef and Burgundy Club men toppled backwards and through the plate glass window. No one is saying how much burgundy had been consumed!

Adriano, now 30, recalls fondly how he and his older brothers Roberto and Michael all grew up at *Geppetto* as kids. It means that he has known some of the customers for 20 years. Adriano spent six years in the kitchen with his dad Nino, as well as time in Italy to work in restaurants and do more schooling, but he maintains that his grandmothers were the best teachers.

Let's hope the Ceas keep cooking up a storm at *Geppetto* for many years to come.



Where the community meets  
for coffee and a bite to eat

65 **George Street Cafe**

9419 5805



# Growing up in East Melbourne – the Lake family

BY LEIGH MORRISON

*Liz and Craig Lake moved to East Melbourne in 1998, just a few weeks after getting married and purchasing their house.*



From left to right:  
Alexander, James,  
Phoebe and Henry

They've been calling the suburb home with their four children, Alexander, James, Phoebe and Henry since.

The most recent additions are two pound-rescued pups, Hazel and Ethel. The family keep repeating how lucky they are to live here. Liz describes it as having 'an island feel', being nice and quiet most of the time, yet they can access a busier pace just a few streets away.

Craig is the recent past president of the Richmond Junior Football club (the 'Tigers'). It has been a really positive influence and a focus for their family. Phoebe played in the inaugural women's league that commenced this season, but admits her strengths lie in other sports. The older boys help run the AusKick program on weekends for the younger kids, as well as playing footy and basketball at representative level. Being so heavily involved in sport, they all agree that it doesn't leave much time for anything else. Liz counted sixteen, *yes sixteen*, activities needing to be accounted for in the weekend drop-offs during the winter season (and this isn't including training during the week). Thankfully the benefit of living in East Melbourne is the proximity to the different activities which are often within walking distance.

Some memorable anecdotes of times in the 3002 postcode include the strange activities that occur in the alley out back. It's not unusual to have wedding parties pose by the back gate for the rustic look that is trendy at the moment. Once, an interesting MCG-goer on grand final day made a pit stop for a 'break', being brash enough to ask for toilet paper and a plastic bag over the fence! Being able to soak up the atmosphere of grand final day at the MCG is a plus. In summer, they love watching the tennis and having the Australian Open on their doorstep. They can make up lunch and walk across. Liz recalls the wind blowing in the right direction one night, and being able to hear Bruce Springsteen in concert word for word.

East Melbourne is a great place to raise a family. There wasn't any hesitation about staying as the kids got older, as they continued to use it as a great base to nearby schools, Richmond Primary, Camberwell High

and Melbourne Girls College. As the family expanded so too did the renovation of the house, Phoebe has proudly scored the biggest room all to herself, whilst James seems convinced that Henry would be better housed in a converted space under the stairs to give him a bedroom to himself. Henry giggles and doesn't seem too fussed, he is just happy that he has a backyard big enough to house a trampoline, a cubby and worm farm.

Everyone agrees the incredibly supportive neighbours are the best part of living here and how that connects them to the local community. Liz said that they've known

some of them since the kids were born and she joined the mothers' group. They've been able to share nannies, maintain strong friendships, and one of the best parts, getting welcomed into one neighbour's backyard to use their pool on hot summer days.

There is a special mention for the handy neighbour Richard, who is able to plug leaks, stop flooding floors, and fix any type of rickety door, all with a calm and trusting smile. It also feels really safe here, especially as the kids can skateboard the streets and parks, walk into the city or catch the tram to Etihad to watch the footy by themselves.

**CAFÉ**  
**GROCER**  
**NEWS AGENT**  
**BOTTLE SHOP**

**BAKERY**  
**MILKBAR**  
**DRY CLEANER**  
**TOBACCONIST**

**53 HOTHAM ST • EAST MELBOURNE 9417 2871**  
**WWW.EASTMELBOURNEGENERALSTORE.COM**



# Critter Carer

BY SIUSAN MACKENZIE

*You only have to take a walk around the neighbourhood each evening around 5pm to know that ours is a suburb where people love their dogs (and cats, but they are more often talked about than seen).*

For just over a year now, local Shelley McOrist has helped local people care for their pets. You might have seen her walking a few familiar dogs. She left a role as a legal assistant to make being a critter carer her full-time job.

During her time as a legal assistant Shelley felt there was something missing in her life so started volunteering at shelters as way to spend time with more animals. Her first job was as a volunteer 'kennel hand' at a cat shelter, and even though it was hard work Shelley quickly realised it was the most fulfilling job she'd had up until that point.

And now, she just loves spending all her days with lovely cats and dogs.

Shelley has lots of experience with animals. She grew up in rural Victoria with a menagerie of pets and as well as her experience in pet shelters and various veterinary clinics, she is studying dog behaviour and training with the Delta Institute. Perhaps her next role will be to offer puppy classes in East Melbourne.

Shelley jokes that picking up poo is the only real 'work' involved. When it's cold and wet (Melbourne 2016!) it's can be hard to be motivated to spend the day outside, but the dogs don't care and are always so excited to go for a walk and that makes it so much easier.

'It's really rewarding hearing from owners that their pets' are happier because of my contribution', said Shelley.

'I adore East Melbourne pet owners! They share a wonderful sense of community and friendship. All of the owners I work with show so much love for their pets; Monty, Pumpkin, Pebbles, Horace, Charlie and Albi - they're absolutely part of the family.

'While out walking dogs, residents will stop to say hello to me and the dogs because they recognise the dog/s and are always interested to hear about how the owners are going too. It's a really uplifting community to be in', according to Shelley.

While cats and dogs make up the bulk of Shelley's work, she also cares for other small animals. Her volunteer role at the RSPCA was caring for 'pocket pets' like guinea pigs, rabbits and chickens, and the occasional more exotic animals like turtles and ferrets. Rabbits are more popular in the inner suburbs than many people realise; they are apparently very loving and can make great indoor lap pets!



**The Critter Carer**  
pet sitting & dog walking  
thecrittercarer.com.au



"It was fantastic to be completely relaxed on holiday knowing our cat was well looked after."  
- Matt & Carmen,  
owners of Mister Bojangles

Inquire now for a complimentary meet & greet  
shelley@thecrittercarer.com.au  
0422 742 334

@thecrittercarer  

Shelley and one of her 'critters' Horace



Albi



Pumpkin



Charlie

## East Melbourne Library building improvements

*A range of refurbishment works will take place at East Melbourne Library early next year to ensure it remains a great place for community members to read, connect, create and learn.*

The works will include new easy-to-use customer service pods and resurfaced floors throughout the library.

Although the library will be closed while the works are in progress, remember you can access the online resources 24-hours a day, visit City Library or any of the other City of Melbourne libraries. More information about the works, including timeframes, will be available on the library website at [melbourne.vic.gov.au/libraries](http://melbourne.vic.gov.au/libraries) from January 2017.

# PEOPLE & PETS

*you meet on the streets*



ALICIA &amp; GABBY

Gabriella is a five year old apricot toy poodle. She is full of life and loves long walks, obstacle courses and playing hide and seek with her owners Alicia and Marcel. Gabriella has a reputation for introducing herself to other dogs with a loud roar, but reverts to hiding behind her owner's legs, once everyone knows she is around. She loves the parks of East Melbourne, and the proximity to other great off leash parks, like Dights Falls when the sporting crowds make Yarra Park difficult for dogs. Her favourite food is chicken but she has a weakness for Greenies, dental treats that taste good and are apparently good for her too! She entertains herself chasing a soft toy but there is no doubt that cuddles are her absolute favourite thing.



DAVID COX

David is new to East Melbourne having been here just six months after moving from Newcastle in the UK and he feels like he landed on his feet at Tippler & Co. David chose Melbourne for its culture, the variety of things to do, the sport, and believe it or not – the weather! He's used to ice and snow so not having to deal with that on a cold morning he thinks is great. Dave is apparently pretty speedy on a bicycle but enjoys pizza and beer too much to do it for a living! Visiting the iconic MCG in person for the first time has been a highlight. Dave thinks the suburb is nice and relaxed considering how close it is to the city but could be improved with live music.



LEIGH MORRISON

Leigh moved to East Melbourne two years ago. She was drawn to move here by her work in consulting and being sick of the regular commute from Sydney to meet clients. It was a hard adjustment initially because she lived at Bondi and giving up the ocean felt she needed to be near nature. Our parks felt good and now, although she could pack up and go home, she has fallen in love with Melbourne. Not long after she moved into TriBeCa residents organised a picnic in Powlett Reserve to get to know each other and this has perpetuated ongoing friendships and a social network. Her aim is to win the Jesus Clock at a Cohen Cellars Trivia Night. When she's not working Leigh enjoys practicing Kundalini yoga.



KATIE STRANKS

Katie came to East Melbourne just six months ago via Sale and Adelaide. She did a quiz on realestate.com which said she should live here! She started looking around and felt it was indeed a perfect match with a nice feel and close to work.

Katie is a junior doctor in paediatric training and when not working loves running, skiing and dancing - although she has been known to combine dance and work! Running around the spacious local parks has been a highlight of life here. Enjoying a drink in the courtyard at Tippler on a warm Friday night she's getting a feel for what the suburb offers by way of entertainment too. She said there isn't much that could be improved here though finding a park on Albert Street is proving a bit tricky when she gets home after night shift.



PHILLIP GROVES

Phillip has been involved with East Melbourne Cellars for over 25 years and has worked full time behind the counter for the past five years. Needless to say he is passionate about wine and loves the diversity of the new styles of wine coming from all over Australia and the wide range of customers who are prepared to try them. His current favourites are a range of McLarenvale wines called 5 Geese – grenache, old vine shiraz and nero d'avola and also a 2009 mouverdre from Terra Felix in Bendigo. He enjoys sharing his favourites with East Melbourne people via his weekly 'wine on taste' sessions [Thur/Fri/Sat] and encouraging them to match food and wine together. When he's not giving wine advice he likes to drop a line in the Bay at Point Lonsdale for relaxation.



CHRISTINE, DARREN &amp; FRIEDA

Christine came from Saarbruecken, Germany to visit her sister living here. That was six years ago. She fell in love with Darren as well as the beautiful streets, architecture and parks in East Melbourne straight away comparing it to the accessibility of her home town. She finds it close to everything including her workplace in Collins Street where she is a physiotherapist with a special focus on rehab, sport and pilates. She is also mother to 10 month old baby Frieda and enjoying connecting with the community through activities like songbirds at the library and drinks at local bars. According to Christine the suburb could do with a school, and she'd like Star Kingdom to make a comeback and also, it would be good if the roundabouts weren't used as racetrack obstacles.



# Community Noticeboard

## CHEWY AMARETTI

These delicious chewy Italian style biscuits are a bit pricey to make but they are the perfect homemade gift for Christmas packaged and tied with a bow. You will get plenty to share from this recipe and your friends will thank you!

### Ingredients

- 4 large egg whites at room temperature in a very clean bowl.
- 500gm almond meal
- 17 1/4 cups caster sugar
- 2teaspoon baking powder
- 1 cup icing sugar
- Glaze cherries
- Blanched almonds

### Method

- Preheat oven to 170°C
- Line two baking trays with baking paper
- Combine almond meal, caster sugar and baking powder in a bowl and make a well in the centre.
- Whisk egg whites until foamy and gradually add to the almond mixture.
- Do not over mix or it becomes tough.
- Place icing sugar in a shallow bowl.
- Roll the dough one tbs at a time and roll into balls then lightly coat in icing sugar.
- Arrange on prepared tray with some room to spread.
- Press a cherry or almond into each biscuit before cooking.
- Bake for 15 minutes until risen, cracked and very lightly coloured.
- Cool for 5 minutes on tray before removing to a wire rack to completely cool.



## THE LITTLE LIBRARY POP UP

Come along to Melbourne Central on Level 2 to visit the Little Library Book Exchange. Anyone can come along and swap or share a book to read. You are encouraged to take a book, and in return, it's requested that you leave one in its place.

Open Monday to Saturday  
from 10am - 7pm



Joel, Laura, Isabelle and Buddy  
enjoying time out in Darling Square

## KEEN GARDENER(S) WANTED

Are you interested in leading the establishment of a community herb garden at the library? If so, please speak with Susan on 0438 405 406 about how we can make this happen



Leonie with Mackie,  
Bibi and Lily

## DELUXE DESIGN GIFT MARKET

Just in time for organising those special Christmas Gifts, the market features independent design, ethical production and is proudly Melbourne-made. Pop in for delicious snacks, beautiful jewellery and accessories, fabulous fashion, homewares, art, stationery, beauty and body products - all made by small independent business people.

Held in the Atrium, Federation Square  
Friday 25 November 5pm - 10pm

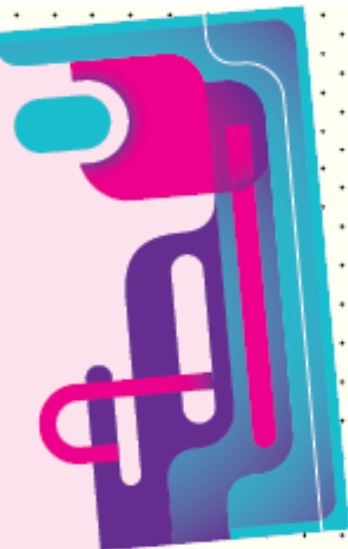




## THE BIG DESIGN MARKET

The Big Design Market curates the best local and international design, with over 230 exceptional stallholders across homewares, textiles, lifestyle, fashion, furniture, lighting, stationery and kids products. There will be creative workshops, designer showbags, art installations, a dedicated kids creative play area and extensive food and drink offerings from local taste makers.

Royal Exhibition Building 2 - 4 December  
Fri: 10am - 9pm Sat: 10am - 7pm  
Sun: 10am - 5pm  
Adults \$2, children 12 and under FREE



## CHRISTMAS AT THE OLD TREASURY



The Old Treasury Building Christmas decorations are a wonder to behold.

The Maynard family's basement home is decorated in period-appropriate 1920s decorations, some lovingly handmade just as mother would do. The ground floor sparkles in red and gold. A particular highlight is the Deakin Room fireplace, adorned with a lush swag as befitting the opulent room.

Until 5 January Monday to Friday and Sunday 10am - 4pm. This is a FREE event

## MAZDA OPERA AT THE BOWL

Pack the picnic, get out the rugs, and round up your family and friends. This free concert will provide a lovely evening's entertainment with some of the most loved opera choruses and arias from four leading soloists, the Opera Australia Chorus and Orchestra Victoria.

Sydney Myer Music Bowl  
Saturday 3 December 8pm - 10pm  
better get there early!

## CHRISTMAS SERVICE TIMES AT HOLY TRINITY

- Cnr Hotham and Clarendon Streets
- Sunday December 18th at 6.00 pm Christmas Carol Service
  - Saturday December 24th Christmas Eve: 11.30 pm Midnight Mass with Carols
  - Sunday December 25th Christmas Day: 8 am Holy Eucharist
  - Sunday December 25th Christmas Day: 10 am Sung Eucharist with Carols



Pat and her wriggling grandson Sam

## CHRISTMAS STORYTIME

Wednesday 7 December, 10.30 - 11.30am

East Melbourne Library

3 - 5 years

No bookings required

It's a holly jolly storytime filled with Christmas stories, songs, games, bubbles, and a sparkly craft activity to take home. Santa will drop by for a quick visit and some outdoor sparkly painting!



## FLEMINGTON RACECOURSE CHRISTMAS MARKET

Enjoy the festive atmosphere with live music, Santa visits, street style market food and plenty of lawn space to relax and take it all in.

For the foodies out there be sure to sample the gourmet delicacies on display and meet the passionate producers behind the fresh, seasonal products. Pick up Christmas cakes, puddings, spice blends, sauces, desserts and canapes for the big day.

Sunday 18 December 9am - 2pm  
428-550 Epsom Road  
Flemington

## NEW LOCAL HIGH SCHOOL

Richmond High School (interim name) will provide a standalone co-educational 7-12 school for the Richmond community. It will be built for 650 students and open in Term 1, 2018.

The Government will build the school over two sites. The sports precinct will be in Gleadell Street on the site of the market car park and the academic precinct will be at the corner of Highett and Gleadell Street.

Being located in the heart of Richmond, the school site has great transport links and is close to existing community infrastructure and services.







BY CHARLIE HOHNEN

We navigate all sorts of things in life but actually finding our way around the planet has changed dramatically over the past decades. In the late 1950s when Sputnik hurtled through space, the world changed.

Think how the early explorers discovered the interior of Australia. No maps, because there weren't any, just the stars and a sextant and a compass. They didn't know what they would find on the way or exactly how to get to their destination and they often took unnecessary items more suited to a royal progress like the brass bath the Burke and Wills expedition hauled away from Melbourne. They didn't know there wasn't actually that much water to spare where they were going.

Some of you will remember setting out on a journey with a detailed map from your state motoring organisation. Those little strip maps took you stage by stage through your journey and the swatch of maps would be put together according to your route and destination.

Maps became more sophisticated and detailed as more people began to travel more often. The next big leap was to navigators based on global positioning systems monitored by

satellites and these have been refined to the point where many, perhaps most vehicles have such systems. Of course there were glitches early on and you learned to expect that you might occasionally fetch up at a dead end or see your way forward disappear over a cliff or under water. It seemed to be possible to drive from Queenscliff to Sorrento straight across the bay. But travelling in unfamiliar territory became much easier.

Nowadays your mobile phone will take you almost anywhere (usually you need network coverage) with detailed instructions to the nearest coffee shop or a national park. The downside is that mobile coverage is patchy to non-existent in much of country Australia. And without the phone coverage the mapping is unlikely to function.

Car navigators fill the gaps and far away places are fun. There may be only one road and it may be pretty much a straight line from departure to destination. But the navigator is very useful even here. There may be tracks joining your route or doubled tracks due to hazards or the road disappears in a wet patch or in vegetation and the device will remove that nagging feeling that you have taken the wrong turn.

In the evening around the gas cooker (fires being frowned upon these days) you can spot satellites. You will be astonished at how many you see in the sky. Some are up there to give your navigator the information it needs to function.

Entering the latitude and longitude of the destination will give you the distance to be travelled and the approximate time of arrival. You can choose fastest or shortest routes. The route between Birdsville and Marree can be over 2000km or about 600km using these alternatives.

It can all be a source of great amusement. Navigate over a sand dune and a cheerful voice will tell you to 'turn right in 50 metres'. Sure enough, there's a sharp turn just over the crest of the dune that the satellites can 'see' even if you can't. Come to a junction and your navigator points out the right track. It will even tell you when you have reached your destination, in case you haven't noticed that the rutted dirt track is now smooth and there are buildings all around.

Satellites have taken the place of stars and sextants and compasses. And nowhere is really remote any more.



## HOUSE TOUR

### 'RETURN TO THE CITY'

*Christmas at  
The Johnston Collection  
2016-17*

This year our wonderful *Christmas at The Johnston Collection* tour will 'Return to the City' and feature new works by Melbourne-based makers and artists for the first time in over a decade.

MONDAY 3 OCTOBER 2016 –  
TUESDAY 31 JANUARY 2017

INDIVIDUAL & GROUP  
BOOKINGS AVAILABLE ON:

[johnstoncollection.org](http://johnstoncollection.org)  
+61 3 9416 2515  
[info@johnstoncollection.org](mailto:info@johnstoncollection.org)



THE JOHNSTON  
COLLECTION



image | woven portrait of William Johnston  
by Pat Scholz | Melbourne  
Tapestry Weavers Collective

# 'RETURN TO THE CITY'

## Christmas at The Johnston Collection

Each year The Johnston Collection is transformed from October until the end of January with a special exhibition designed to remind visitors it is Christmas season.

This year artists' collectives and various individual artists have joined forces to delight visitors with their unique contributions including newly commissioned works especially for this year's exhibition

### RETURN TO THE CITY

The exhibition includes:

- An installation from artists' collective **Hotham Street Ladies** (that's Hotham Street in Collingwood) renowned for their subversive baking and who famously turned the foyer of the National Gallery into an icing-coated share house for the *Melbourne Now* exhibition. For *RETURN TO THE CITY*, the Hotham Street Ladies will transform the Green Room into 'a night

after' scene from an imaginary party hosted by William Johnston on his return to Melbourne from swinging London in the 1960s. This royal icing installation will be based on the wreckage and debris left by the departing guests after a night of debauchery.

- Textile artist **ChiliPhilly** who has been featured in the Huffington Post, the BBC and BuzzFeed, and has created an installation featuring crochet hats and a crochet portrait of William Johnston and his friend Ahmed, in the Blue Room.
- The Bedroom featuring work by artist **Louise Saxton**, who has created stunning pieces from reclaimed needlework, along with the whimsical sculptural paper works of artist **Sai-Wai Foo**
- Architectural illustrator **Lewis Brownlie**, who makes his mark in the study with his

distinctive intricate line-work, this time in wire.

- Painter **Robyn Rich**, textile designer **Abbey Rich**, printmaker **Sharon Okines**, and ceramicist **Irianna Kanellopoulou** who have installed pieces inspired by objects in the Collection in the White Room.
- **The GLAD Rappers**, who have yarn bombed the Yellow Room.
- Artist **Amanda Dziedzic**, who displays her exquisite glass vegetables in the Kitchen

The Johnston Collection museum in Hotham Street is a hidden East Melbourne treasure

that can be visited over and over again as the house is just the backdrop for a range of installations throughout the year. Be sure to put it on your summer 'to do' list and be prepared to be delighted by another thing in your backyard.



## Real smiles for real people.

We are a people-focused practice, both in the way we deliver dental care and the staff we employ. Our relationships with our patients drive everything we do, from the cutting edge dentistry we practice to the little extras we provide – all designed to ensure that each visit is memorable, for all the right reasons.

Level 1, 126 Wellington Parade, East Melbourne  
Visit our new website: [eastmelbournedentist.com.au](http://eastmelbournedentist.com.au)  
**9417 5874**



**East Melbourne  
Dental Group**





# Rev's Rant

BY FR. GRANT EDGCUMBE

*The Melbourne of my young adulthood was a wonderful place, albeit a little less vibrant than now.*

How we used to enjoy morning tea at George's Regency Room where I was referred to as 'the young gentleman' and then at the other end of the scale a pie at Cole's cafeteria in Bourke Street. Buckleys was still Buckleys and the huge santa on the Foy and Gibson's portico beckoned children with his bending finger. The streets were clean and I remember going into the city to see the Christmas lights turned on, a tablet was something you swallowed when you had a headache and who knew what an SMS was going to be.

Melbourne today is still a wonderful place but much more crowded and some might say more exciting. Much has changed for the better but one troubling feature is the number of people living on the footpaths. These sad scenes are repeated over and over again in Swanson Street, Elizabeth Street and even as far away as Lygon Street in Carlton. Folks with bedding, blankets, sometimes even a pet, and their meagre

possessions lie huddled against shop fronts in attempt to remain warm and guarded.

I don't know about you but their presence makes me feel uncomfortable and in my mind I often ask what 'they' are doing about it. What are the Council, the Government, the Police doing about this, why are people allowed to end up on the footpaths like this? Surely there are places of refuge these people can be put in?

Funny as it may seem these folks are retelling the Christmas story in a way. When God came to be with us in the form of Jesus it was in a place unexpected, on the street, in the discomfort, cold and vulnerability of an open stable.

So as we rip off the tinsel and pretty paper, to enjoy the gifts of this fabulous season let's remember the greatest gift of all came wrapped in simple bands of cloth and was laid in the humblest of cribs and maybe our homeless folk are a reminder to us of how God came to visit us.

## Christmas service times at Holy Trinity

Cnr Hotham and Clarendon Streets

- **Sunday December 18th**  
6.00 pm Christmas Carol Service
- **Saturday December 24th Christmas Eve**  
11.30 pm Midnight Mass with Carols
- **Sunday December 25th Christmas Day**  
8 am Holy Eucharist
- **Sunday December 25th Christmas Day**  
10 am Sung Eucharist with Carols

MELBOURNE  
RESIDENTIAL  
PROPERTY  
SERVICES

0408 697 108

Buyers advocate  
specialising in East  
Melbourne and inner city

Short term property rental  
in the inner city,  
and beach areas of  
Victoria and NSW



**PARCEL /// PENDING®**  
THE PACKAGE MANAGEMENT SOLUTION

## RESIDENTIAL ON-PREMISE LOCKER SYSTEM

Our clever modular lockers fit neatly into foyers, carpark & outdoor areas, and can be used for all deliveries, including parcels, dry cleaning, groceries etc.

Couriers deliver straight into the lockers and you receive an immediate SMS or email with a secure one-time access code. Say goodbye to the "Sorry We Missed You" cards!

Interested in trialling lockers at your building? For more information or to participate in our East Melbourne pilot, contact Lauren Melton on 0448 929 405.



www.parcelpending.com sales@parcelpending.com.au  
Level 27, 101 Collins Street, Melbourne VIC 3000 Phone +61 3 9221 6177

## East Melbourne Neighbours' Network... *it's just about being neighbourly and informed!*

BY PAT JONES  
on behalf of the Network

We are a group of East Melbourne residents who recognise that we are fortunate to reside in this iconic village.

It is therefore understandable that we would hope to remain in our homes for as long as we can; happy, confident and safe.

Significant challenges that accompany the ageing process may impact on this decision. These include a lack of connectedness within our neighbourhood, isolation, concerns about health and safety, and home maintenance. With the friendship, hospitality and practical support of our local community, knowledge of our entitlements and available services, we may be able to extend the time in our homes.

Our network has devised a two prong strategy to achieve our goal:

- The support and friendship of a caring community
- An ongoing education program which addresses the needs of our ageing residents

We are addressing the former through our monthly gatherings at the Henderson's home in Grey Street. There we focus on getting to know our neighbours in a friendly and relaxed setting.

To date, those present have shared information on social and cultural events, education programs such as U3A (University of the Third Age), tips on technology usage, and more.

According to Tim it is an organic bringing together of neighbours. 'There is no set agenda apart from providing general support to each other if necessary without being intrusive. Sometimes it is help with little things that can make such a difference like putting a bin out or offering to walk a dog if someone is unwell.'

We have collated a support list indicating members' offers of practical support. For example; collecting the newspaper and essentials when a person is unwell, ensuring bins are out for collection, and driving a neighbour to a local medical appointment when a family member is unavailable.

Being part of the network has made Eileen look up to notice the people around her more. 'Instead of walking along with my head down I am mindful of the new connections I have made and keep an eye open for them on the streets now,' she said.

To ensure that residents are well informed, and can confidently plan for their future needs, we are offering information sessions on the ageing process. COTA (Council Of The Ageing) is a national organisation which liaises with government on the rights, needs and interests of older Australians. Our group has enlisted their help in commencing our education program. Our first session, on home care packages and their change to

consumer directed focus, was well attended. Any future education programs will be determined by the needs of our members.

We encourage the group to be actively involved in the East Melbourne Group and the East Melbourne Historical Society, as we recognise the value of both associations to

East Melbourne residents.

We have been meeting for the last four months, and will conclude the year with a BYO Christmas gathering in Darling Square. If you would like more information about the network please give Pat a call on **0425 854 836**



*Network members Tim and Eileen stop for a chat on the street*

**THE VICTORIAN ARTISTS SOCIETY**  
FOR THE LOVE OF ART

We are in your neighbourhood and welcome visitors to our galleries

**EXHIBITIONS - ART FOR SALE - ART CLASSES - WORKSHOPS**

**MAVIS LITTLE ARTIST OF THE YEAR EXHIBITION**  
19 November - 6 December 2016

**LITTLE TREASURES**  
30 November - 13 December 2016

**AFFORDABLE ART SALE - AUCTION**  
20 February - 7 March 2017

**GALLERIES OPEN 10am - 4pm Weekdays 1pm - 4pm Weekends**

430 Albert Street, East Melbourne 3002  
Ph. 03 9662 1484 [www.victorianartistsociety.com.au](http://www.victorianartistsociety.com.au)



# GOOD SUMMER READ

Before the Fall / Noah Hawley

Noah Hawley, apart from being the author of five books, also served as a writer and producer on the TV series *Bones* as well as the executive producer, writer and for the TV series *Fargo*. He's clearly a talented man with a love of intrigue!

This was a page-turner of a book for me, one I thoroughly enjoyed and one which I think would be a perfect summer read or beach read ...

On a foggy summer night, eleven people—ten privileged and one down-on-his-luck painter—depart Martha's Vineyard in a private plane headed for New York. Sixteen minutes later, the unthinkable happens: the passengers disappear into the ocean. The only survivors are Scott Burroughs, the painter and a four-year-old boy, who is now the last remaining member of a wealthy and powerful media mogul's family.

With chapters weaving between the aftermath of the tragedy and the backstories of the passengers and crew members, including

among others, a Wall Street titan and his wife, a Texan-born party boy just in from London, a young woman questioning her path in life and a career pilot, the mystery surrounding the crash heightens.

As the passengers' intrigues unravel, odd coincidences may point to a conspiracy: was it merely chance that so many influential people perished? Or was something far more sinister at work? Events soon threaten to spiral out of control in an escalating storm of media outrage and accusations, all while the reader draws closer and closer to uncovering the truth.

Noah Hawley does a great job in keeping us guessing throughout the story. The narrative structure is fantastic with interweaving perspectives from the different

players and the reader is constantly teased with various possibilities of how and why the plane crashed. Scott is the main lens through which we view the story and the reader is always brought back to the same question of just how much can we trust this narrator.

Is he actually the bad guy? Or was he an unwitting innocent who has become involved in a conspiracy to kill one or more of the other characters? The book is also a fascinating exploration of the vagaries of human nature and the dark side of both art and celebrity. The danger of an unchecked media, and just how much the masses buy into what is shown on so called 'news' channels is another major thread and one which is incredibly relevant I think.

BY JUSTINE HANNA  
East Melbourne Librarian



I really loved the way the relationship between Scott and the young boy was handled, as well as Scott's own back story. It was believable to me but with just the right amount of doubts planted ...!

All in all it's a great read and as for 'who did it' if anyone did? You'll have to read the book to find out!

For more reading recommendations listen to our Dear Reader podcast at: <https://soundcloud.com/melbourne-library-service>

## FASHION, FOOD, FILM, ON YOUR DOORSTEP

**BUY ONE TICKET GET ONE FREE**

**KINO CINEMAS**

CP001

Buy one ticket get one free on movies playing at Kino, A Palace Cinemas Partner.

Lower Ground, Collins Place  
45 Collins Street, Melbourne  
9650 2100 | [palacecinemas.com.au](http://palacecinemas.com.au)

T&C: Free ticket only available upon purchase of a standard adult, student, child, pensioner and senior ticket and all movie club tickets. Valid only for same day, same session. Not valid with any other offer. Not valid on discount days or Saturday's after 5pm, film festivals, special events or 3D. Valid until 31 October 2016.

**KINO**

M.J. BALE

EARL

OPSM

rokk ebony

seed



# While East Melbourne isn't next to an airport, sometimes it feels like it

BY ELLEN SANDELL



*Over the last few years, the number of helicopter and plane flights directly over East Melbourne has significantly increased, with noise so loud it's sometimes hard to have a simple conversation over the incredible racket.*

During the first half of 2015, there were more than 10 flights a day hovering over East Melbourne, and it's only getting worse.

Because of East Melbourne's proximity to the city, and to landmarks like the MCG, the suburb is a common destination for joy flights, trainee pilots, sightseeing helicopters, news and traffic helicopters. It gets worse during big events like the AFL Grand Final, and the Docklands faces a similar problem.

Unfortunately, the airspace is unregulated because it is too far from a major airport, which leaves residents without any binding rules to stop small aircraft hovering over residential areas. Our laws have simply not kept up with the reality that many residents now have to face each day.

Airspace control is primarily a Federal issue, but there are actions that Local Government and the State Government can take to help solve the problem. The Greens at all levels of government have been working with residents to find solutions.

Later this year, Adam Bandt MP will introduce a private member's bill to the Federal Parliament to give Air Services Australia the power to regulate aircraft traffic and consider the human, natural environment and community amenity in built-up areas.

The Bill would require companies to consult with communities about flight paths, and would create a new Aircraft Noise Ombudsman and an independent Community Aviation Advocate to represent residents' interests.

Our Bill would bring Melbourne in line with cities like Paris by prohibiting helicopter and fixed-wing aircraft flights below 2000 metres over residential areas within 5km of the CBD. Exceptions will exist for emergency services aircraft and other essential services.

Greens Councillors have also passed a motion at Melbourne City Council directing Council to implement Fly Neighbourly Agreements (FNA). FNAs are voluntary agreements between flight operators and residents which bring affected parties to the table to negotiate and resolve issues.

This is a carrot and stick approach. Companies will be encouraged to sign up to voluntary agreements to prevent excessive aircraft noise, and if they do not, we hope to legislate to fix the problem.

In State Parliament, Ellen Sandell MP has officially called on the Premier to find solutions and to ask his Federal colleagues to support the Greens' Bill. We will also take up several cases with the State Planning Minister.

Our Bill is expected to come before the House of Representatives by the end of 2016. City of Melbourne have not yet reported back to Council regarding the process of FNAs, but we expect this to happen soon.

Whatever happens, the Greens will continue working with residents to find a solution to this problem. Please get in touch if you'd like to hear more.

**Ellen Sandell MP, Adam Bandt MP, Rohan Leppert and Cathy Oke.**  
**Your State, Federal and Local Council Greens representatives.**



BY ROSIE SMITH

# Another farewell to grand local history

Some residents of 3002 may have attended the recent dinner at the Pullman Hotel to farewell the Cliveden Room. Named after the three storey Italian Renaissance mansion which once stood on the site, the intimate dining room boasts some of the original carved doors, panelling and stained glass featured in the original grand and opulent home of the Clarkes.

Standing on the corner of Clarendon Street and Wellington Parade overlooking the Fitzroy Gardens and Yarra Park, Cliveden was built in 1886 for Sir William J. Clarke. In 1874 Sir William was the largest landholder in Australia, a member of State Parliament and a generous philanthropist. The architects were Wardell & Vernon of Sydney and the builder was Stephen Armstrong. Named after the Astor family's famous country estate in Buckinghamshire, no expense was spared on the construction or embellishments of the building. Oak panelling was shipped from England and stained glass from Italy. A team of craftsmen from Florence arrived to work on the fittings.

There were 28 bedrooms, 5 bathrooms and 17 servants' bedrooms. Such a residence of course needed a ballroom and this one, measuring 50 ft (15.24 m) by 100 ft (30.48 m), could apparently easily accommodate 250 guests. Sir William and his wife entertained lavishly and often and the house was famous for its size, setting and views. Two soldiers from Sir William's own regiment, The Rupertswood Battery, were always on guard duty outside the main entrance.

Sir William was an industrious man; he was made Australia's first baronet in recognition of his philanthropy and he was also President of the Melbourne Cricket Club and the Victorian Football Association. He died of a heart attack in 1897. In 1909, after Lady Janet Clarke's death, Cliveden was sold to the Ballieu family. The architects Grainger and Little were commissioned to add a fourth floor and to convert the building into luxury apartments to be known as Cliveden Mansions.

Taking its cue from New York City apartment blocks, Cliveden Mansions provided no internal kitchens for its residents. Far from a shortcoming, this trait was in fact flaunted in promotional material. The advertising clearly articulated:

'Kitchenettes are unknown at "Cliveden" Mansions. All meals are prepared in the up-to-date kitchen presided over by a highly-

accomplished French chef, and served in the diningroom [sic] by a courteous and efficient staff. The diningroom is solely for the use of tenants and their guests.'

The prestigious reputation of the original building meant that these apartments were seen as a highly desirable address.

By the end of the Second World War, amenities such as a communal kitchen and a shared garage and mechanic were no longer seen as necessary and the ageing building saw its prestige slip.

The building was sold in 1968 and was demolished amid controversy to make way for the high rise Hilton Hotel. The valuable fixtures and fittings were removed and sold at auction. These ran to 2500 lots giving an indication of the sheer scale of what was once such a fabulous building. It is understood that when the Pullman owners carry out the proposed renovations to the lobby area and restaurants, some of the Cliveden artefacts will be incorporated into the new design.



*Cliveden shortly after construction in 1886  
Image courtesy of the East Melbourne Historical Society*

## EAST MELBOURNE CONTINUES TO ASTOUND

BY JACOB CAINE

A crowd of close to a hundred witnessed the breathtaking spectacle of a one bedroom East Melbourne apartment muscle its way above the \$1 million mark. Five bidders competed vigorously during the auction of Apartment 6 at 'Knightsbridge' (45 Gipps St). More than 75 individual bids were recorded, before the apartment was declared sold by auctioneer Paul Caine for a suburb record \$1,015,000.

Peter Hannon of Caine Real Estate, who managed the sales campaign, was quoted by various media outlets as saying 'this apartment ticked all of the boxes'. This phenomenal result is further evidence of East Melbourne's tremendous appeal to owner occupiers and investors alike.



# From 3002 to the BIG stage

BY SIUSAN MACKENZIE

*For singers the opportunity to stand on the grand stage that is Carnegie Hall in New York is a usually just a dream.*

Built by philanthropist Andrew Carnegie in 1891, it is one of the most prestigious venues in the world for both classical and popular music. Since 1891 almost all of the leading classical music, and more recently, popular music performers, have graced the Carnegie Hall stage.

Rock and roll music first came to Carnegie Hall when Bill Haley & His Comets appeared in a variety benefit concert in 1955. Rock acts were not regularly booked at the Hall but in 1964, the Beatles performed two shows during their historic first trip to the United States.

Add to that two unlikely singers from East Melbourne, Siusan and Alicia, members of an unauditioned choir that rehearses each week at a hall in St Vincent's hospital, who performed at Carnegie Hall in September this year.

We sang the *Street Requiem* which is a moving contemporary new choral work that aims to bring a sense of peace, remembrance and hope to communities that struggle to come to terms with street violence and a loss of safety on our streets in Australia and around the world.

Conceived by the award-winning conductor of Choir of Hard Knocks and Founding Artistic Director of the School of Hard Knocks, Dr Jonathon Welch AM, *Street Requiem* is collaboratively written with Dr Kathleen McGuire and Andy Payne.

A decade ago, any mention of a choir would probably have brought Sunday morning hymns to mind. But there's been a revolution in attitudes towards joining the local choir, which is good news for singing in a choir is now known to be beneficial for health and wellbeing in a number of different ways.

Our choir has a very wide repertoire. We have recently performed Queen (Freddie Mercury not HRH), the Best of British and a 70s inspired (think Bowie, Carpenters, Elton and ABBA) concert, all in full costume to add to the sense of fun.

Find the right choir and it can lead you to the most unexpected places! I will certainly never forget my time in the spotlights of Carnegie Hall stage or the standing ovation we received.

If you are interested in checking out this local choir go to [www.thechoir.com.au](http://www.thechoir.com.au)



## >> The Future of Parcel Deliveries

BY LYNNE THORNTON &amp; LAUREN MELTON

East Melbourne residents tired of receiving 'Sorry We Missed You' cards will be delighted to hear that innovation is finally coming to residential parcel deliveries. Over the next few years, tracking down missed deliveries and standing in queues at the post office will become a thing of the past. Smart parcel lockers for on-premise residential use are finally coming to Australia.

The first post boxes appeared in Paris in 1653 and have barely changed in centuries. In contrast, the type and size of items shipped direct to the consumer have changed dramatically. Gone are the bills, advertising and personal mail that used to grace our letterboxes; parcels, groceries, alcohol and other deliveries have proliferated. The National Australia Bank estimates Australians now spend more than \$20 billion annually on online retail purchases.

Tackling the last kilometre of the delivery, which ends at the customer's doorstep, has vexed the e-commerce industry for years. It is the most expensive part of the journey, and must be repeated with each failed delivery attempt. This challenge is particularly acute in unattended commercial buildings and for apartment dwellers, where security measures often make deliveries impossible.

These frustrations are felt on a larger scale by the City of Melbourne. In June, the City published a Last Kilometre Freight Plan to highlight this growing problem. At present, between 10,000 and 12,000 delivery vehicles enter the City each day, impacting congestion, air quality and liveability. These deliveries are a combination of residential and commercial; an estimated 30 per cent are second or even third time deliveries! Others are inefficient deliveries, where trucks are left idle in loading zones whilst drivers travel up and down lifts to drop parcels. The City intends to reduce this problem significantly by 2020 and is currently exploring alternatives.

In the US, Europe and Asia, smart electronic lockers are being embraced as a solution. In addition to public locker banks, it is increasingly common for 'courier agnostic' lockers to be installed at apartments and commercial buildings. On-premise lockers allow all deliveries to be made into a private bank of lockers, for the convenience and security of residents and tenants. Users receive an immediate SMS with a single-use access code, and enjoy the convenience of 24/7 pickup at their own address. Use of this innovative technology has spread rapidly; within North America, on-premise parcel lockers have become one of the top five most requested amenities among apartment dwellers.

Parcel Pending, a US-based company with more than 600 systems installed in the US, recently established an Australian entity based in Melbourne. Director Lauren Melton, a long-time resident of East Melbourne, believes the 3002 postcode – with its 1599 (and growing) apartment dwellers – is an ideal location for the first pilot Down Under. Registration for the 2017 program is now underway. Lauren invites all interested owners corporations to contact her at 0448 929 405.

The benefits of smart parcel lockers are well established around the world. They are a win-win-win for all parties in the e-commerce supply chain: retailer, courier and consumer. Our community has the opportunity to evangelise this long overdue technology – are we ready to say goodbye to the 'Sorry We Missed You' card?







Merry Christmas

THE TEAM AT  
CAINE REAL ESTATE  
WISHES YOU ALL A HAPPY  
AND SAFE FESTIVE SEASON.

DON'T END UP ON SANTA'S NAUGHTY LIST  
WHEN IT COMES TO **EAST MELBOURNE** PROPERTY  
CONTACT YOUR LOCAL EXPERTS

 CAINE 

[caine.com.au](http://caine.com.au)